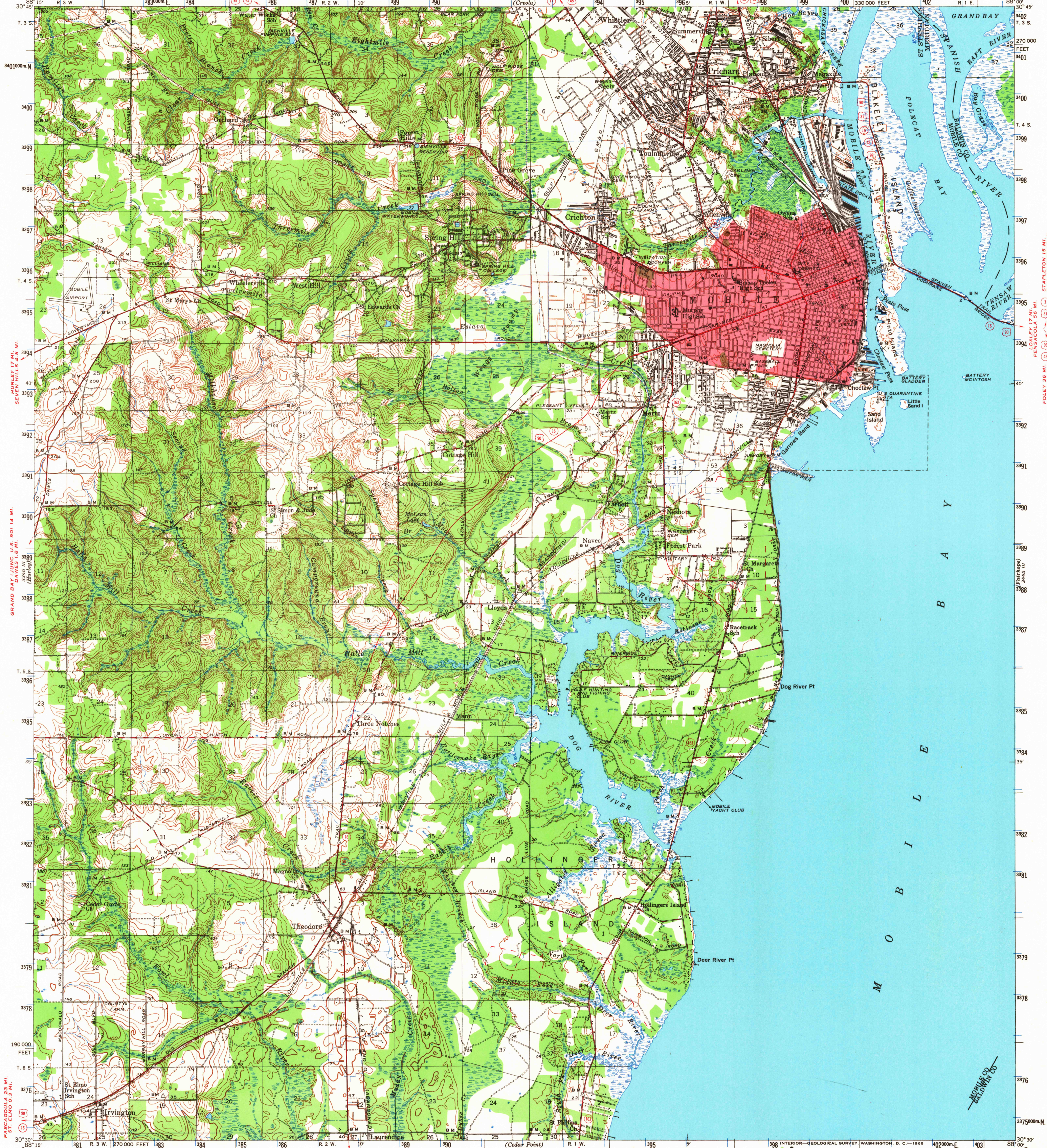


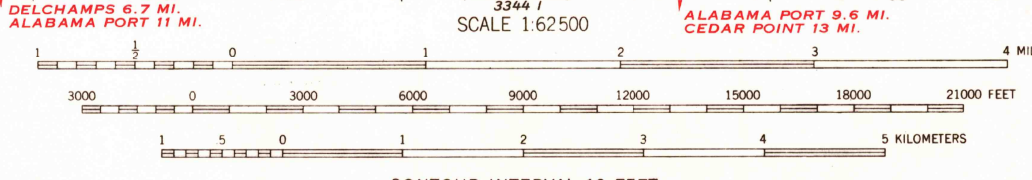
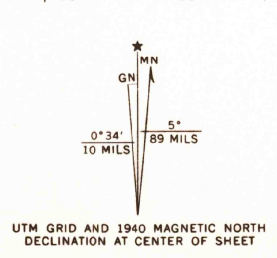
UNITED STATES  
DEPARTMENT OF THE ARMY  
CORPS OF ENGINEERS

UNITED STATES  
DEPARTMENT OF THE INTERIOR  
GEOLOGICAL SURVEY

ALABAMA  
MOBILE QUADRANGLE  
15-MINUTE SERIES



Topography by W. K. McKinley, E. R. Batteen, Harold Williams, and A. G. Kirk  
Surveyed in 1938-1940  
Red tint indicates an area in which only landmark buildings are shown



CONTOUR INTERVAL 10 FEET  
DATUM IS MEAN SEA LEVEL  
FOR SALE BY U.S. GEOLOGICAL SURVEY, WASHINGTON, D. C. 20242  
A FOLDER DESCRIBING TOPOGRAPHIC MAPS AND SYMBOLS IS AVAILABLE ON REQUEST

ROAD CLASSIFICATION

Heavy-duty	Light-duty
Medium-duty	Unimproved dirt
U. S. Route	Slate Route

Polyconic projection. 1927 North American datum  
10,000-foot grid based on Alabama (West)  
rectangular coordinate system  
1000-meter Universal Transverse Mercator grid ticks,  
zone 16, shown in blue

MOBILE, ALA.  
N3030-W8800/15  
1940  
AMS 3345 II-SERIES V744  
USGS  
Historical File  
Topographic Division

25.980  
NOV 7 1967

TOPOGRAPHIC DIVISION