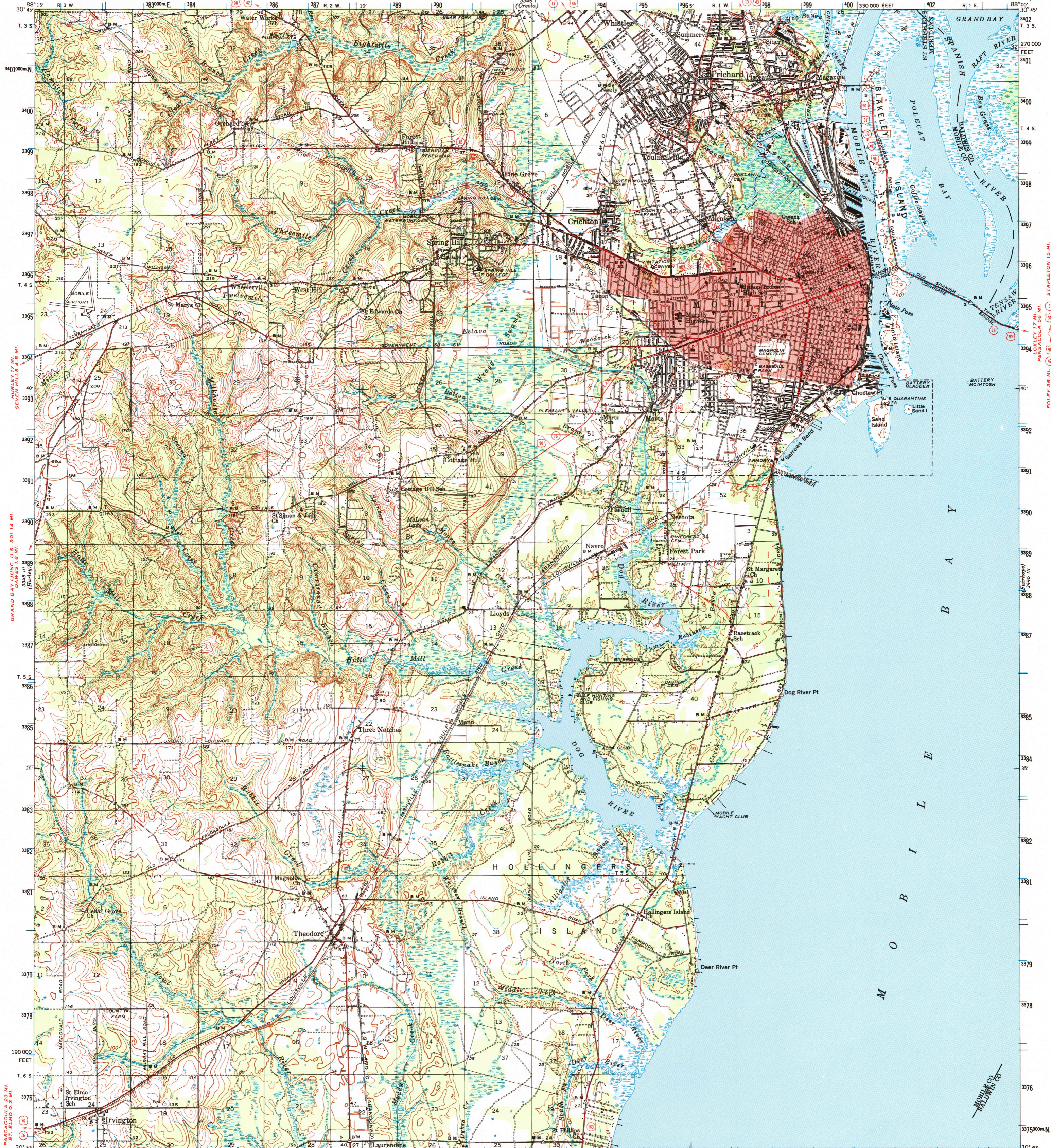


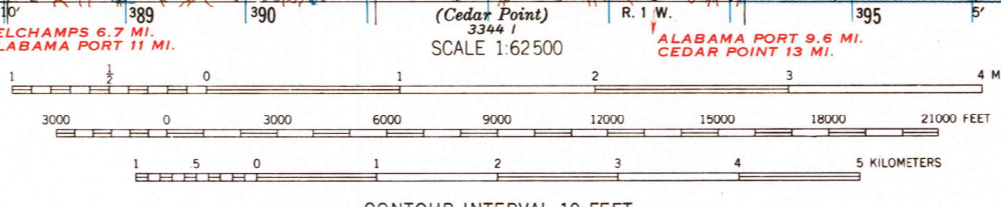
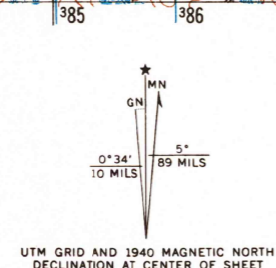
UNITED STATES
DEPARTMENT OF THE ARMY
CORPS OF ENGINEERS

UNITED STATES
DEPARTMENT OF THE INTERIOR
GEOLOGICAL SURVEY

ALABAMA
MOBILE QUADRANGLE
15-MINUTE SERIES



Topography by W. K. McKinley, E. R. Batteen,
Harold Williams, and A. G. Kirk
Surveyed in 1938-1940
Red tint indicates an area in which
only landmark buildings are shown



ROAD CLASSIFICATION

Heavy-duty	Light-duty
Medium-duty	Unimproved dirt
U.S. Route	State Route

Polyconic projection. 1927 North American datum
10,000-foot grid based on Alabama (West)
rectangular coordinate system
1000-meter Universal Transverse Mercator grid ticks,
zone 16, shown in blue

MOBILE, ALA.
N3030-W8800/15
1940
AMS 3345 II-SERIES V744

FOR SALE BY U.S. GEOLOGICAL SURVEY, WASHINGTON, D. C. 20242
A FOLDER DESCRIBING TOPOGRAPHIC MAPS AND SYMBOLS IS AVAILABLE ON REQUEST

