

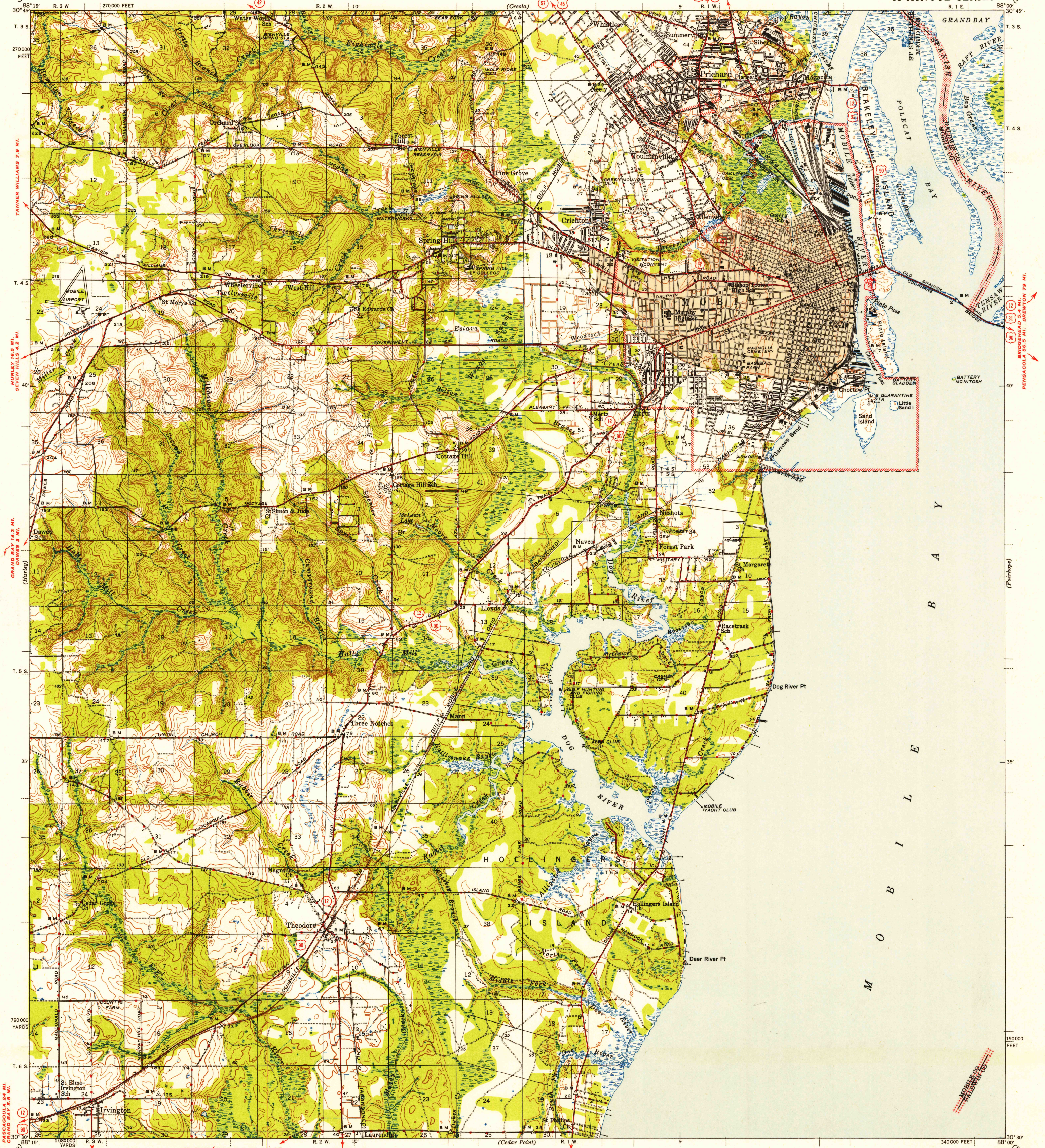
FILE COPY

Inspection and Editing.

UNITED STATES
DEPARTMENT OF THE INTERIOR
GEOLOGICAL SURVEY

WAR DEPARTMENT

ALABAMA
MOBILE QUADRANGLE
15-MINUTE SERIES



Topography by W. K. McKinley, E. R. Batteen,
Harold Williams, and A. G. Kirk
Surveyed in 1938-1940
Gray tint indicates an area in which
only landmark buildings are shown

ST. ELMO (JUNC. U. S. NO. 80) 4.7 MI.
DIXON CORNER 3.4 MI.
BAYOU LABATRE 7 MI.

DELCHAMPS 6.9 MI.
CODDEN 13.8 MI.

SCALE 1:62500

Contour interval 10 feet
Datum is mean sea level

U. S. G. S.
FILE COPY
Inspection and Editing.

Polyconic projection. 1927 North American datum
5000 yard grid based on U. S. zone system, C
10000 foot grid based on Alabama (West)
rectangular coordinate system

ROAD CLASSIFICATION

Dependable hard-surface
heavy-duty road
Secondary hard-surface
all-weather road
Dirt road
Loose-surface, graded
Unsurfaced, graded
dry weather roads
More than two lanes indicated along road with tick at point of change

U. S. Route 15
State Route 26

MOBILE, ALA.

Edition of 1944

N 3030-W 8800/15

USGS
Historical File
Topographic Division

Sept 19, 1952
Tideover
HISTORICAL