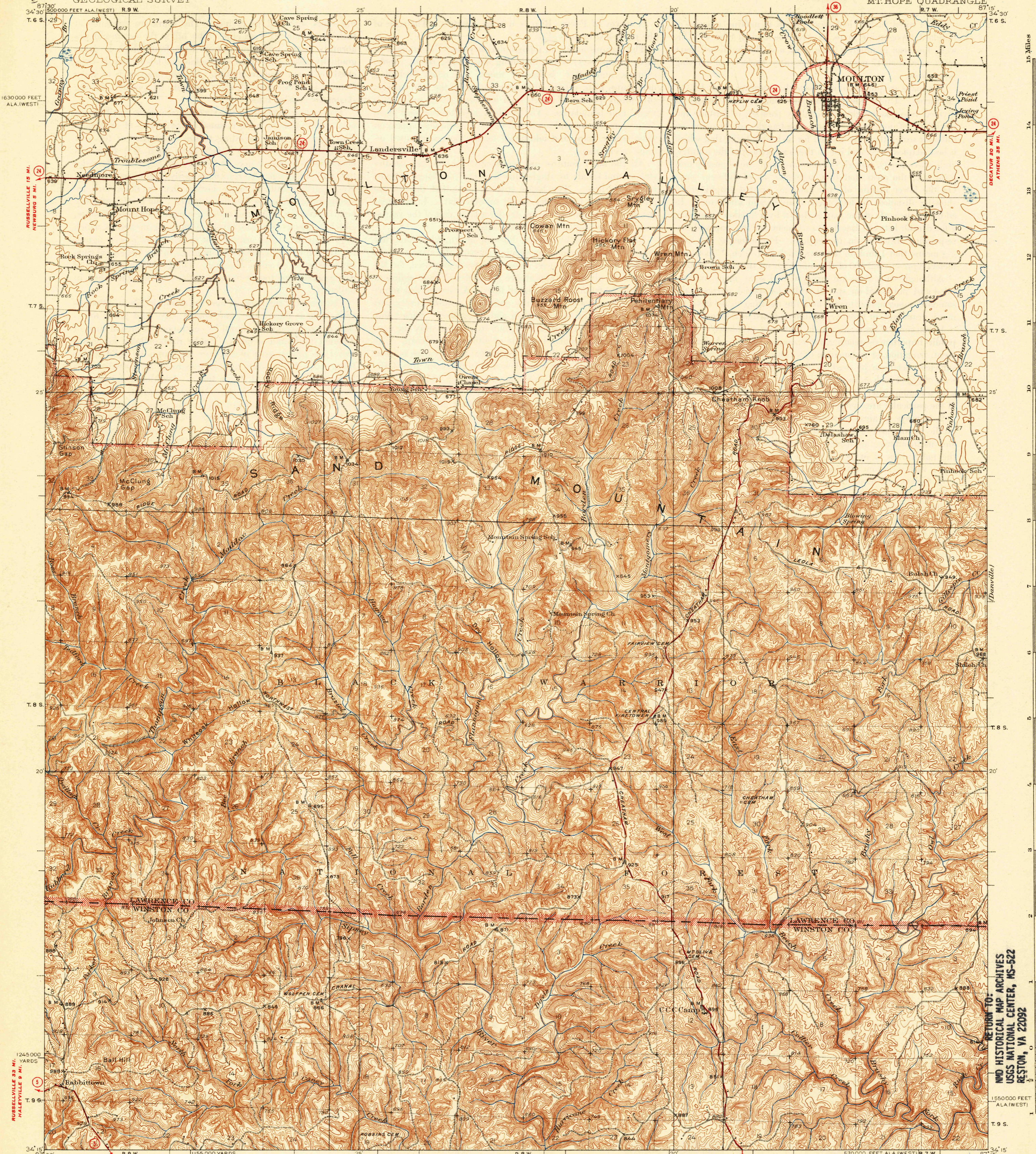


UNITED STATES
DEPARTMENT OF THE INTERIOR
GEOLOGICAL SURVEY

ALABAMA
MT. HOPE QUADRANGLE



87° 30' T. 6 S. 15
1630 000 FEET ALA. (WEST)
R. 9 W.
T. 7 S.
T. 8 S.
T. 9 S.
1245 000 YARDS
R. 9 W.
1155 000 YARDS
R. 8 W.
R. 7 W.
R. 6 W.
R. 5 W.
R. 4 W.
R. 3 W.
R. 2 W.
R. 1 W.
87° 15' T. 6 S.
15 Miles
14
13
12
11
10
9
8
7
6
5
4
3
2
1
1550 000 FEET ALA. (WEST)
T. 9 S.
34' 15'

Topography by W.F. Chenault, W.B. Brewer, E.H. Cummings, J.H. Lycett and Shirley Waggener. Culture and drainage in part compiled from aerial photographs taken by Air Corps, U.S. Army, DOUBLE SPRINGS 8 MI. Surveyed in 1935-1936. BIRMINGHAM (CIVIC CENTER) 80 MI.

Scale 82500
1 0 1 2 3 4 Miles
5000 10000 15000 20000 Feet
1 2 3 4 5 Kilometers

Contours interval 20 feet
Datum is mean sea level

DOUBLE SPRINGS 14 MI.
RUTES USUALLY TRAVELED
HARD IMPERVIOUS SURFACES
OTHER SURFACE IMPROVEMENTS
1940
U. S. ROUTE
STATE ROUTE

570 000 FEET ALA. (WEST) R. 7 W. I
POLYCONIC PROJECTION, 1927 NORTH AMERICAN DATUM
5000 YARD GRID BASED ON U.S. ZONE 18 5000
10000 FOOT GRID BASED ON ALABAMA WEST
RECTANGULAR COORDINATE SYSTEM

FILE COPY
NOT TO BE REMOVED FROM FILES
MP. HOPE, ALA.
Edition of 1940
N 3415 - W 8715/5

RETURN TO:
AND HISTORICAL MAP ARCHIVES
USGS NATIONAL CENTER, MS-522
RESTON, VA 22092