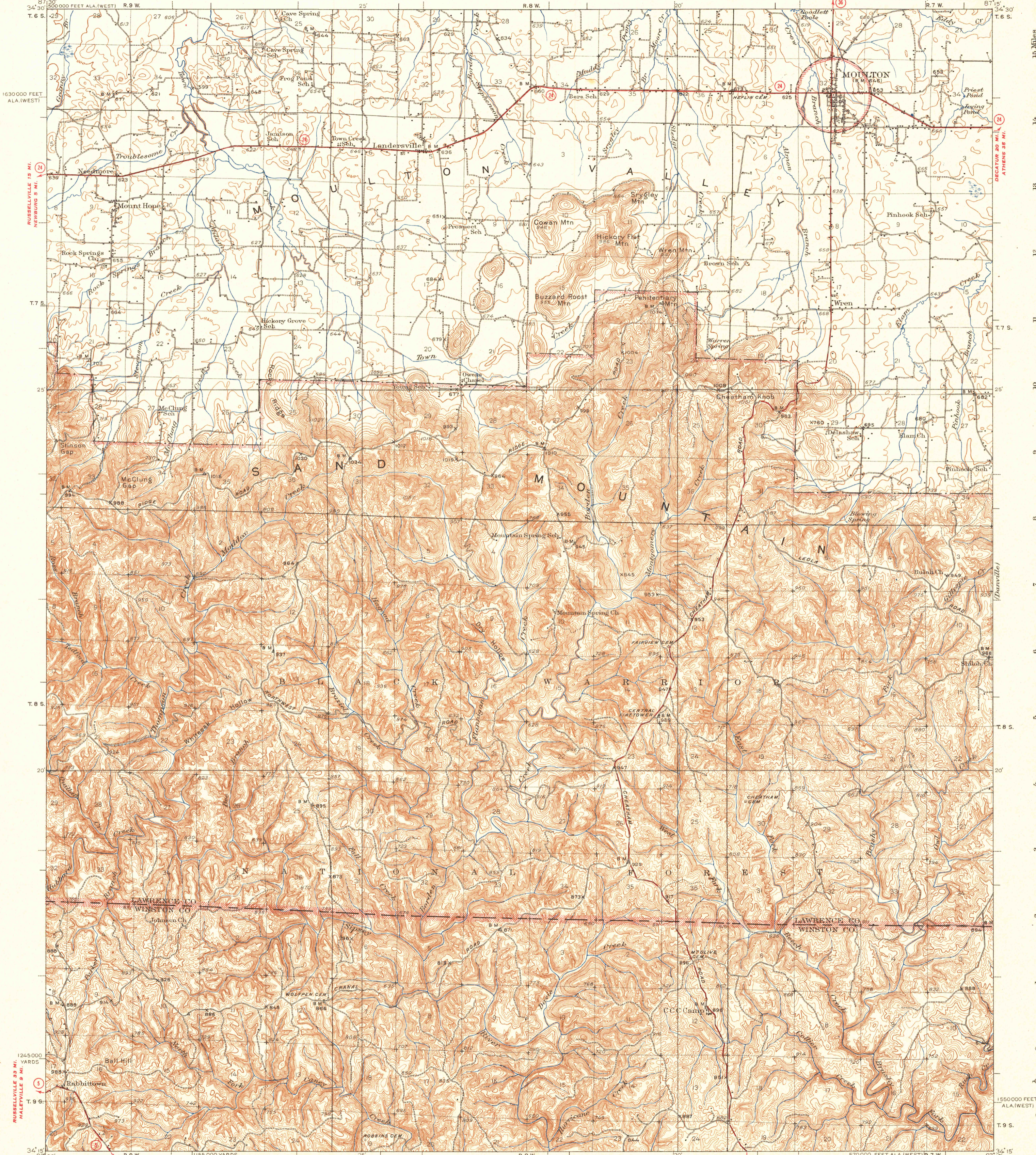
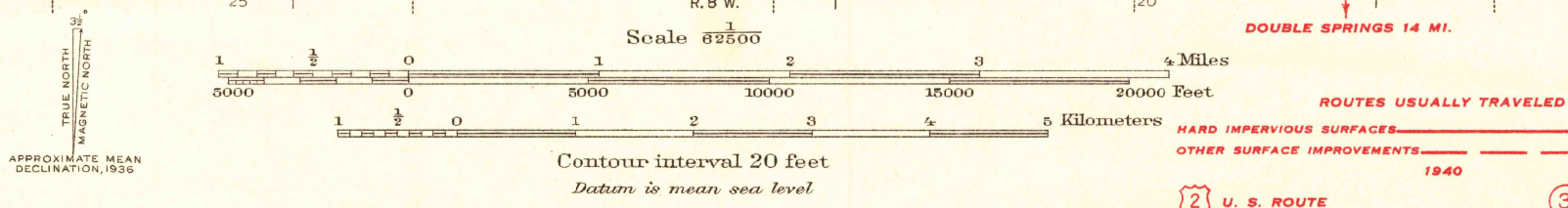


UNITED STATES
DEPARTMENT OF THE INTERIOR
GEOLOGICAL SURVEY

ALABAMA
MT. HOPE QUADRANGLE



Topography by W.F. Chenault, W.B. Brewer,
E.H. Cummings, J.H. Lycett, and Shirley Waggener.
Culture and drainage in part compiled from aerial photographs
taken by Air Corps U.S. Army **DOUBLE SPRINGS 5 MI.**
Surveyed in 1935-1936 **BIRMINGHAM (CIVIC CENTER) 80 MI.**



Polyconic projection, 1927 North American datum
5000 yard grid based on U.S. zone system, C
10000 foot grid based on Alabama (West)
rectangular coordinate system

DOUBLE SPRINGS 14 MI.
ROUTES USUALLY TRAVELED
HARD IMPERVIOUS SURFACES
OTHER SURFACE IMPROVEMENTS
1940
2 U. S. ROUTE **3 STATE ROUTE**

MT. HOPE, ALA.
Edition of 1940
N3415-W8715/15