

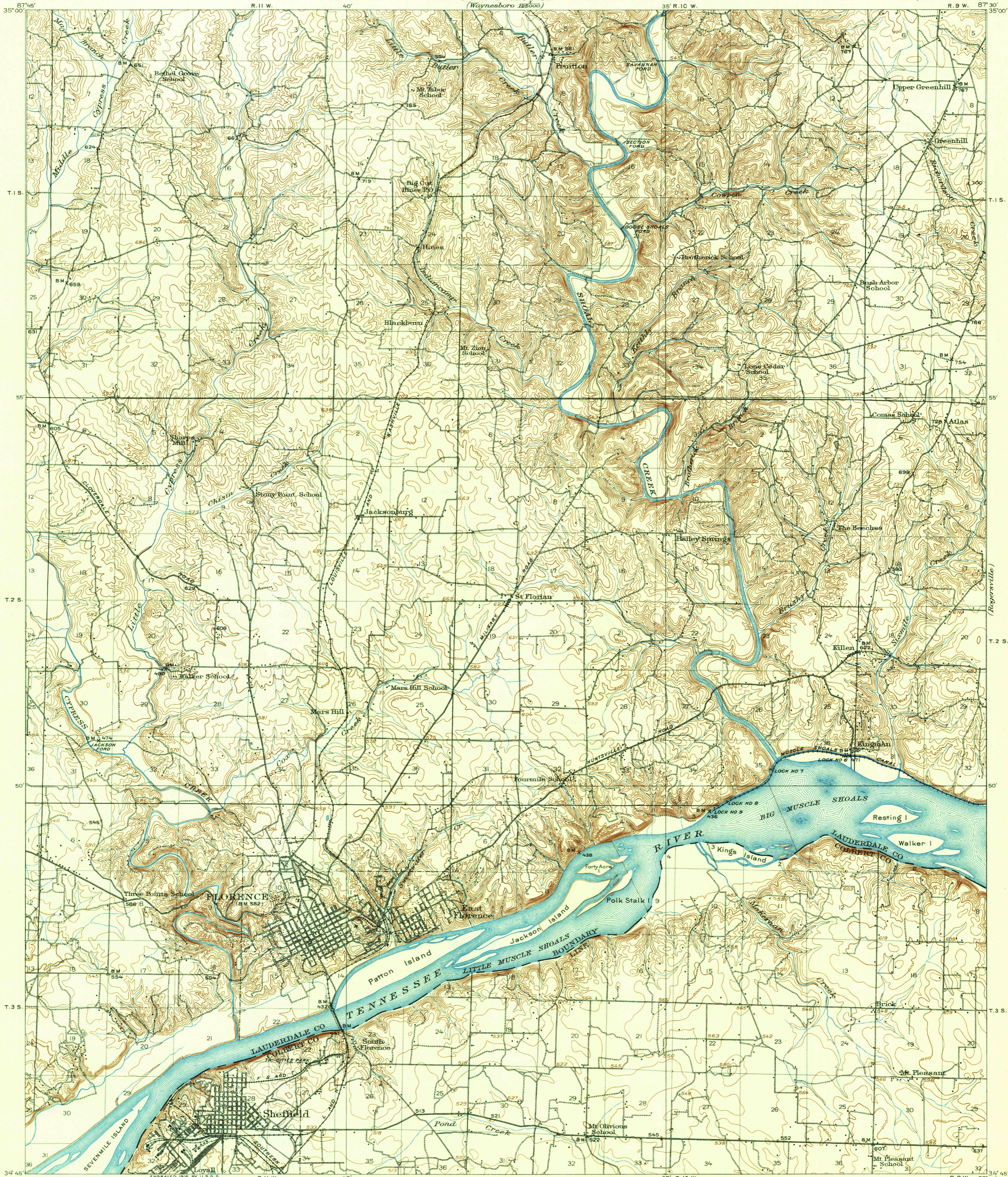
(Waynesboro)

TOPOGRAPHY

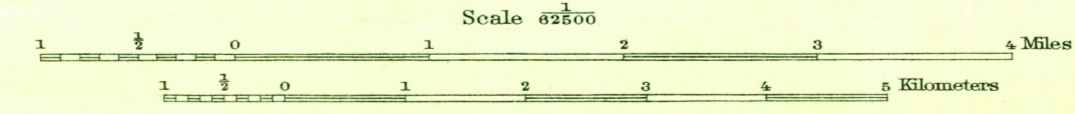
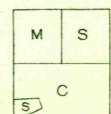
STATE OF ALABAMA
EUGENE A. SMITH
STATE GEOLOGIST
(Waynesboro 12500)

ALABAMA
MUSCLE SHOALS QUADRANGLE

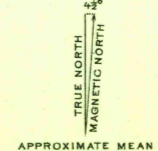
DEPARTMENT OF THE INTERIOR
U.S. GEOLOGICAL SURVEY



R. B. Marshall, Chief Geographer.
 Frank Sutton, Geographer in charge.
 Topography by Chas. E. Cooke, W. H. S. Morey, and T. F. Slaughter.
 Control by E. L. McNair, C. B. Kendall, and C. W. Arnold.
 Tennessee River by Corps of Engineers U.S. Army.
 Surveyed in 1912 and 1914.



Contour interval 20 feet.
 Datum is mean sea level.



Edition of 1916.

MUSCLE SHOALS

SURVEYED IN COOPERATION WITH THE STATE OF ALABAMA.