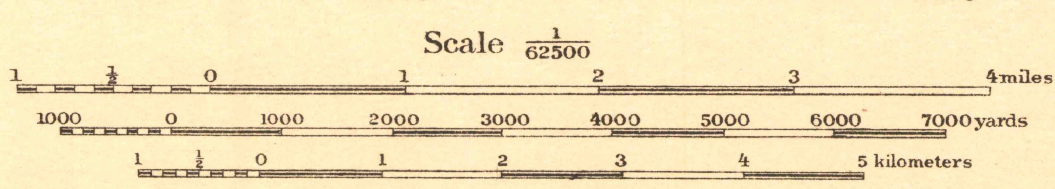
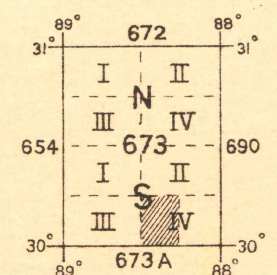


Base map from U. S. C. & G. S. Charts Nos. 188 & 189, map of land approaches to fortifications near Mobile and other available data.
Field work and compilation under the direction of Col. W. M. Black, Corps of Engineers, U. S. Army, Department Engineer, Eastern Department.
Field work by Lieut. H. S. Hemingway, C. A. C., U. S. A., March 1912.
Fathom Lines referred to mean low water.



FIVE THOUSAND YARD GRID COMPUTED FROM "GRID SYSTEM FOR PROGRESSIVE MAPS IN THE U.S." ZONE C. U. S. C. & G. S. SPECIAL PUBLICATION NO. 59. (THE LAST THREE DIGITS OF THE GRID NUMBERS ARE OMITTED)

NOTE: OFFICERS USING THIS MAP WILL MARK HEREON CORRECTIONS AND ADDITIONS WHICH COME TO THEIR ATTENTION AND MAIL DIRECT TO "THE CHIEF OF ENGINEERS, WASHINGTON, D.C."



TRUE NORTH
MAGNETIC NORTH
APPROXIMATE MEAN DECLINATION 1921

PETTIT BOIS ISLAND

ALABAMA