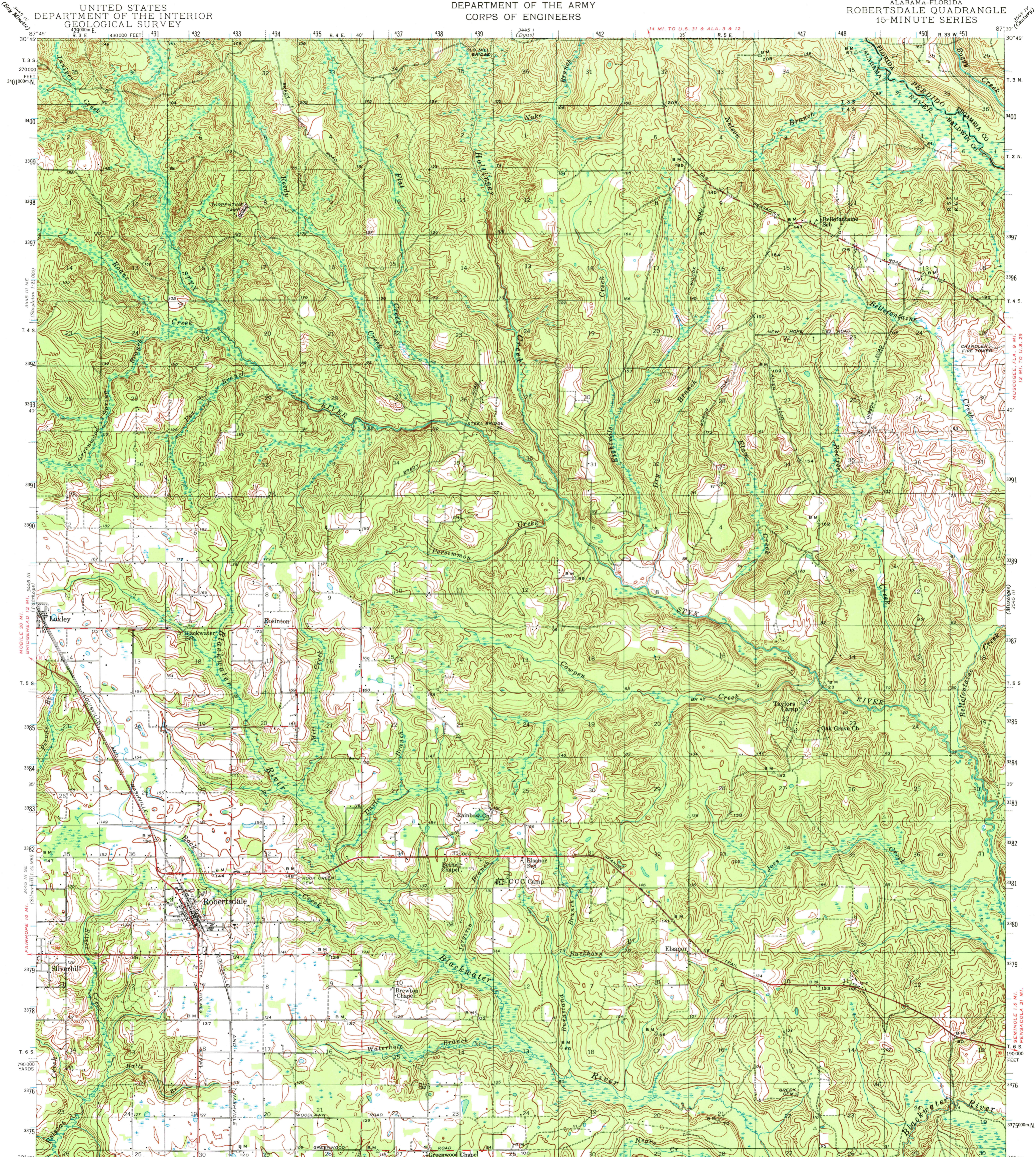


UNITED STATES  
DEPARTMENT OF THE ARMY  
CORPS OF ENGINEERS

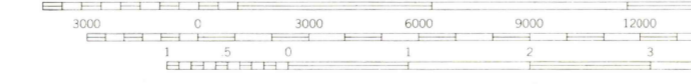
ALABAMA-FLORIDA  
ROBERTSDALE QUADRANGLE  
15-MINUTE SERIES

UNITED STATES  
DEPARTMENT OF THE INTERIOR  
GEOLOGICAL SURVEY



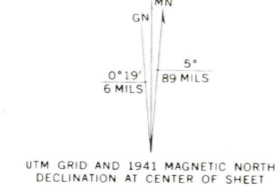
Topography by B. P. Taylor, R. C. Darnell, W. D. Ehrich, C. W. Nottage,  
LeGrand Smith, Edmond Swidzinski, L. B. Walker, Leonard Powell,  
R. G. Shirley, and M. E. Sojka  
SUMMERDALE 1:2 MI. FOLEY 6.6 MI.  
Surveyed in 1940-1941

SCALE 1:62,500



ROAD CLASSIFICATION  
Heavy-duty ——— Light-duty ———  
Medium-duty - - - - - Unimproved dirt - - - - -  
U. S. Route      State Route

Interior-Geological Survey, Washington, D. C. - 1973  
Polyconic projection. 1927 North American datum  
5000 yard grid based on U. S. zone system, C  
10000 foot grid based on Alabama (West)  
rectangular coordinate system  
1000-meter Universal Transverse Mercator grid ticks,  
zone 10, shown in blue  
ROBERTSDALE, ALA.-FLA.



Contour interval 10 feet  
Datum is mean sea level

FOR SALE BY U.S. GEOLOGICAL SURVEY, WASHINGTON, D. C. 20242  
A FOLDER DESCRIBING TOPOGRAPHIC MAPS AND SYMBOLS IS AVAILABLE ON REQUEST

N3030-W8730/15  
1941  
AMS 3445 II-SERIES V744  
OCT 1 1973

USGS  
Historical File  
Topographic Division

2700