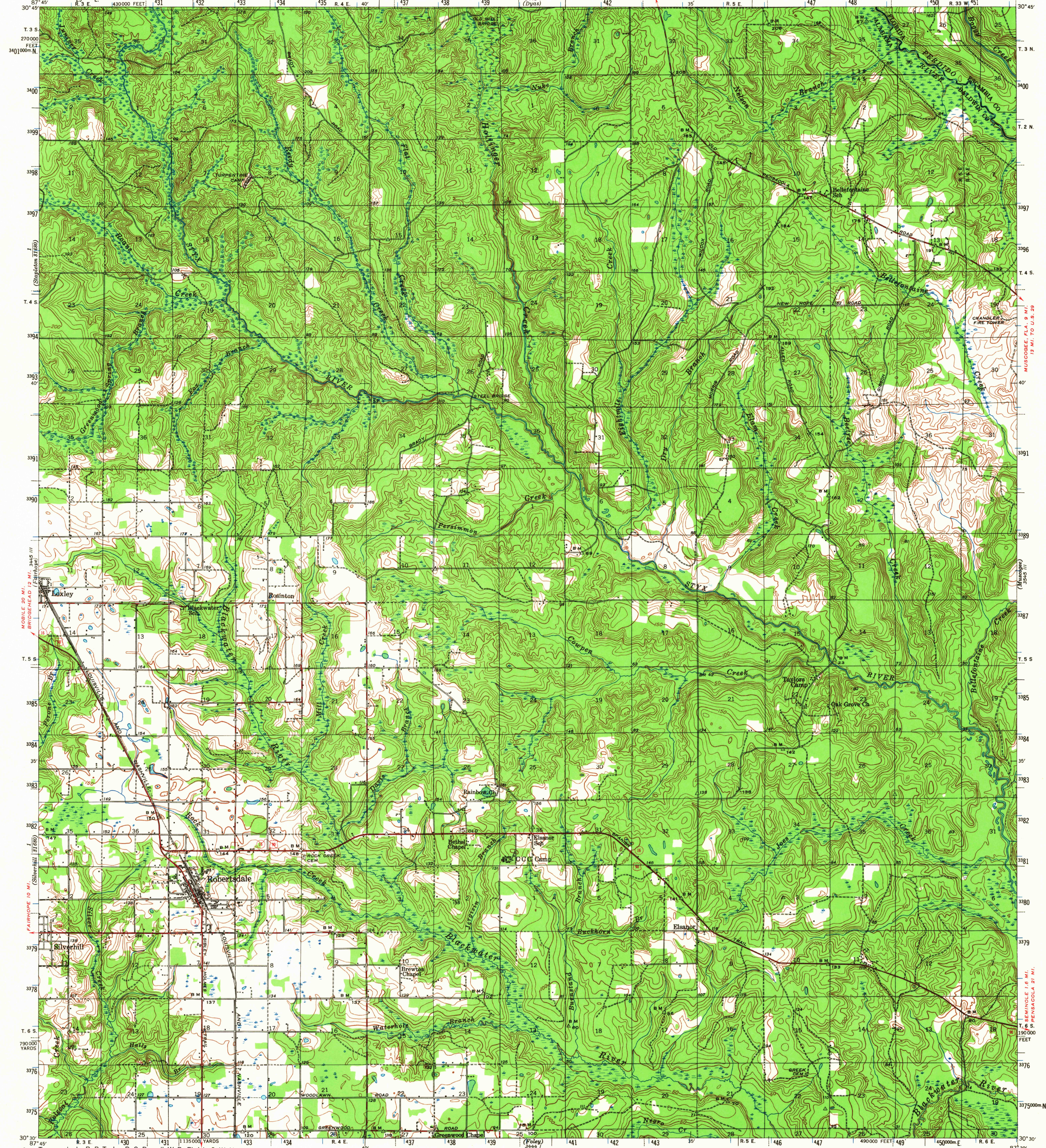


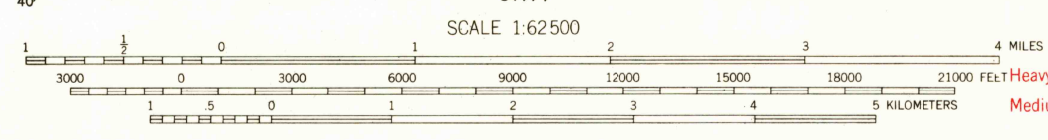
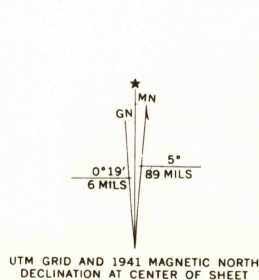
UNITED STATES  
DEPARTMENT OF THE ARMY  
CORPS OF ENGINEERS

ALABAMA-FLORIDA  
ROBERTSDALE QUADRANGLE  
15-MINUTE SERIES

UNITED STATES  
DEPARTMENT OF THE INTERIOR  
GEOLOGICAL SURVEY



Topography by B. P. Taylor, R. C. Darnell, W. D. Ehrich, C. W. Nottage,  
LeGrand Smith, Edmond Swidzinski, L. B. Walker, Leonard Powell,  
R. G. Shirley, and M. E. Sojka  
Surveyed in 1940-1941



ROAD CLASSIFICATION  
Heavy-duty ——— Light-duty ———  
Medium-duty - - - - - Unimproved dirt - - - - -  
U. S. Route      State Route

Polyconic projection. 1927 North American datum  
5000 yard grid based on U. S. zone system, C  
10000 foot grid based on Alabama (West)  
rectangular coordinate system  
1000-meter Universal Transverse Mercator grid ticks,  
zone 10, shown in blue  
ROBERTSDALE, ALA.-FLA.

USGS  
Historical File  
Topographic Division

U.S.G.S. MAY 15 1967

N3030-W8730/15  
1941

FOR SALE BY U. S. GEOLOGICAL SURVEY, WASHINGTON, D. C. 20242  
A FOLDER DESCRIBING TOPOGRAPHIC MAPS AND SYMBOLS IS AVAILABLE ON REQUEST

FILE COPY  
TOPOGRAPHIC DIVISION  
HISTORICAL

AMS 3445 II-SERIES V744

1735