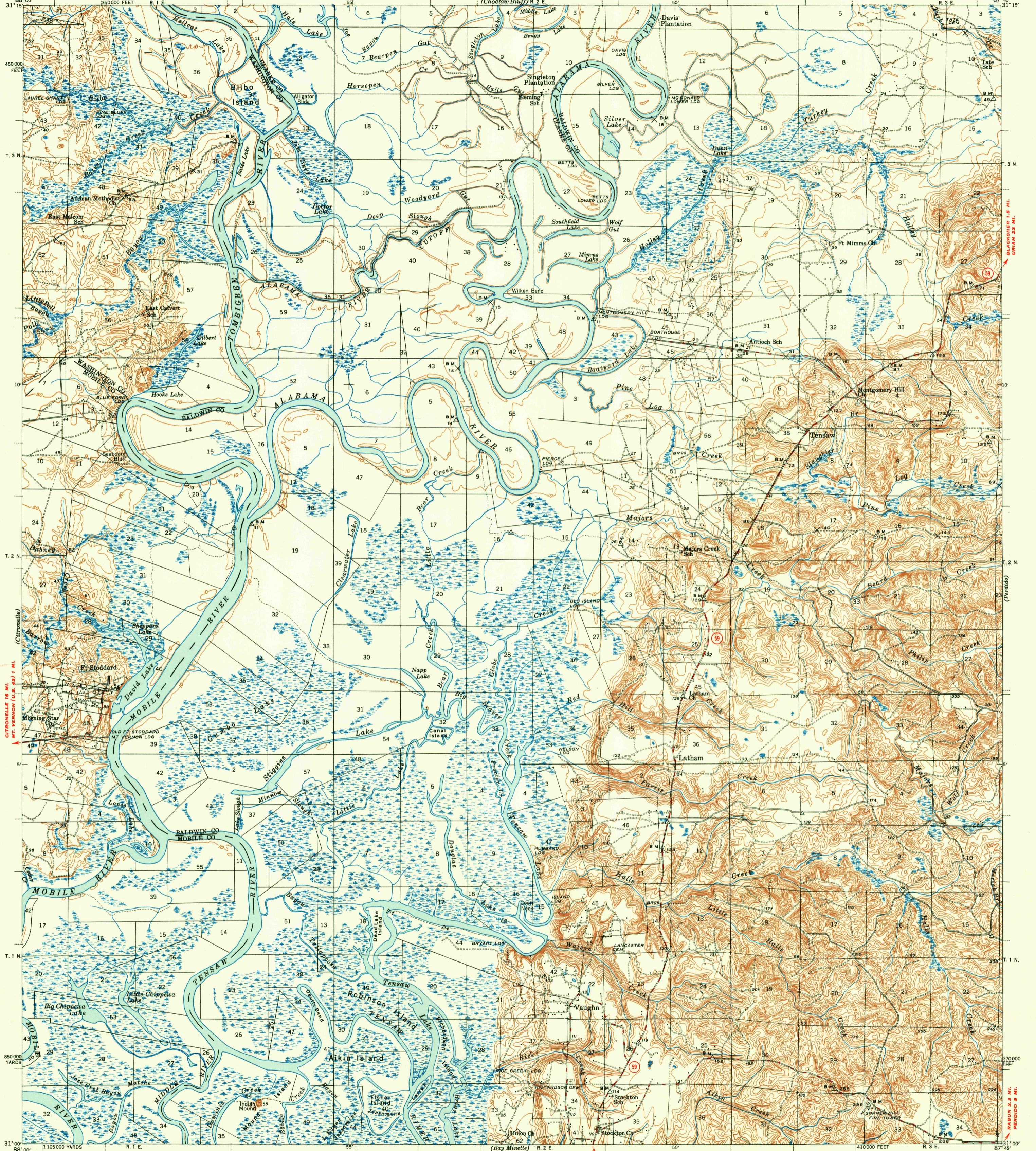


U.S.G.S. FILE COPY Inspection and Editing.

UNITED STATES DEPARTMENT OF THE INTERIOR GEOLOGICAL SURVEY

UNITED STATES DEPARTMENT OF THE ARMY CORPS OF ENGINEERS (Choctaw Bluff) R. 2 E

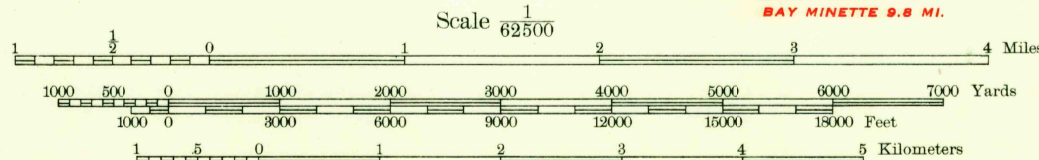
ALABAMA TENSAW QUADRANGLE 15-MINUTE SERIES



Topography by S. D. Farmer, J. A. McKeon, C. R. Atkins, E. R. Batteen, C. H. Price, Ray Redfean, Harold Bloom, Virgil Le Blanc, J. J. Rowe, Dale Doggett, L. E. Efraimson, R. G. Shirley, L. M. Bixby, N. D. Robert, R. B. Marshall, and J. R. Borchert. Surveyed in 1941-1943.

ROAD CLASSIFICATION: HARD-SURFACE ALL WEATHER ROADS, DRY WEATHER ROADS, Heavy-duty, LANE LANE Improved dirt, Medium-duty, LANE LANE Unimproved dirt, Loose-surface, graded, or narrow hard-surface, U. S. Route, State Route.

APPROXIMATE MEAN DECLINATION, 1948



FOR SALE BY U. S. GEOLOGICAL SURVEY, WASHINGTON 25, D. C. A FOLDER DESCRIBING TOPOGRAPHIC MAPS AND SYMBOLS IS AVAILABLE ON REQUEST

USGS Historical File Topographic Division FILE COPY Inspection and Editing.

TENSAW, ALA. Edition of 1944 reprinted 1951 N3100-W8745/15 A7

MAY 9 1951

HISTORICAL HISTORICAL