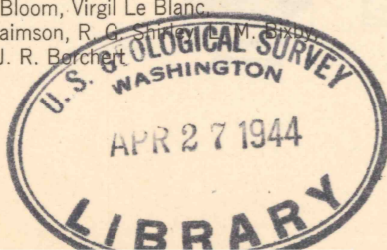
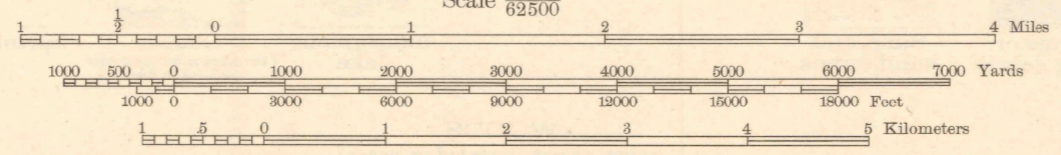




Topography by S. D. Farmer, J. A. McKeon, C. R. Atkins, E. R. Batteen, C. H. Price, Ray Redfean, Harold Bloom, Virgil Le Blanc, J. J. Rowe, Dale Doggett, L. E. Efraimson, R. G. N. D. Robert, R. B. Marshall, and J. R. Bercher. Surveyed in 1941-1943



TRUE NORTH
MAGNETIC NORTH
APPROXIMATE MEAN
DECLINATION, 1943



ROAD CLASSIFICATION		1943
Dependable hard-surface	Loose-surface, graded	U. S. Route 15
heavy-duty road	Unsurfaced, graded	State Route 26
Secondary hard-surface	dry weather roads	
all-weather road	Dirt road	

More than two lanes indicated along road with tick at point of change. 2 LANE | 4 LANE

Polyconic projection. 1927 North American datum
5000 yard grid based on U. S. zone system, C
10000 foot grid based on Alabama (West)
rectangular coordinate system

TENSAW, ALA.
Edition of 1944
N3100-W8745/15