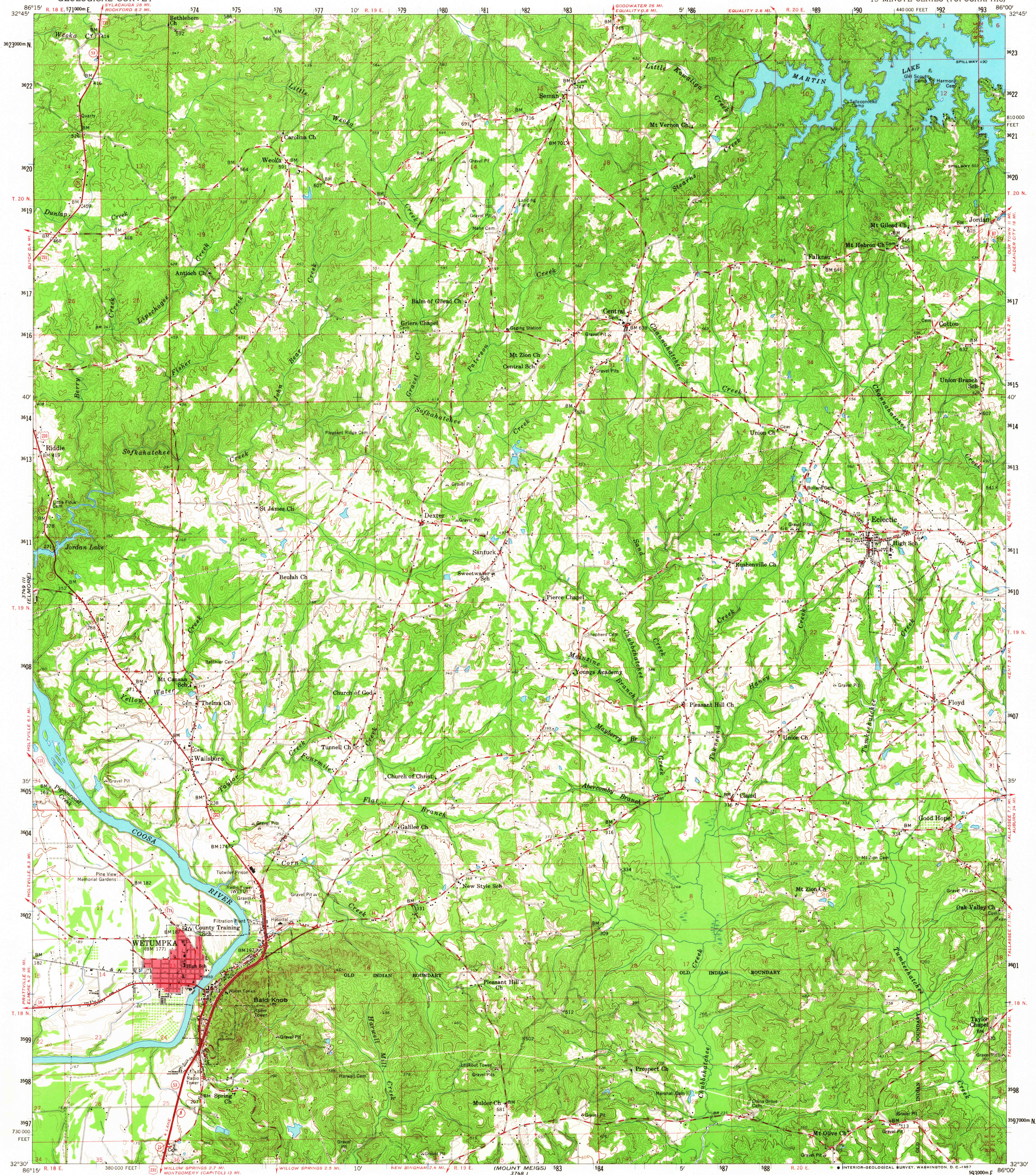


UNITED STATES
DEPARTMENT OF THE INTERIOR
GEOLOGICAL SURVEY

WETUMPKA QUADRANGLE
ALABAMA—ELMORE CO.
15 MINUTE SERIES (TOPOGRAPHIC)



Mapped, edited, and published by the Geological Survey

Control by USGS, USC&GS, and USCE

Topography from aerial photographs by photogrammetric methods

Aerial photographs taken 1955-1956. Field check 1959

Polyconic projection. 1927 North American datum

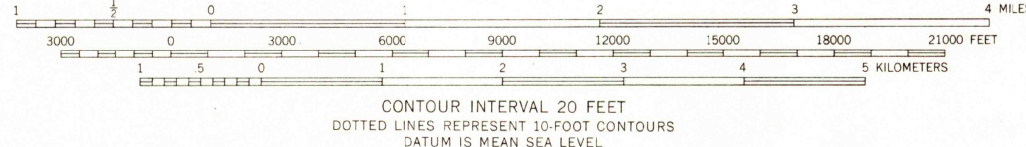
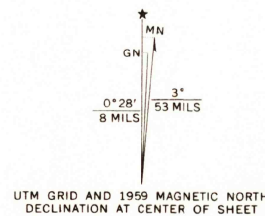
10,000-foot grid based on Alabama coordinate system, east zone

1000-meter Universal Transverse Mercator grid ticks,

zone 16, shown in blue

Red tint indicates area in which only

landmark buildings are shown



THIS MAP COMPLIES WITH NATIONAL MAP ACCURACY STANDARDS
FOR SALE BY U.S. GEOLOGICAL SURVEY, WASHINGTON, D.C. 20242
A FOLDER DESCRIBING TOPOGRAPHIC MAPS AND SYMBOLS IS AVAILABLE ON REQUEST

U.S.G.S.
TOPOGRAPHIC DIVISION

ROAD CLASSIFICATION
Heavy-duty ——— Light-duty ———
Medium-duty ——— Unimproved dirt ———
U.S. Route ——— State Route ———

USGS
Historical File
Topographic Division

WETUMPKA, ALA.

N 3230—W 8600/15

1959

AMS 3749 II—SERIES V744

3360

DEC 13 1959

HISTORICAL