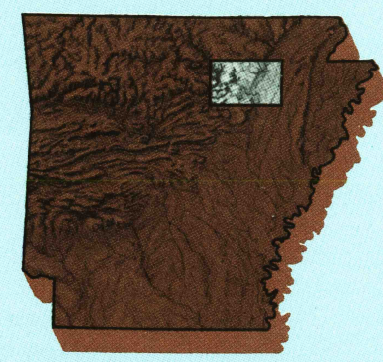


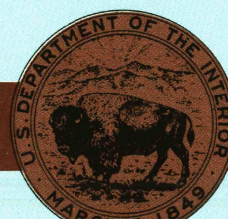
# Batesville ARKANSAS

1:100 000-scale  
planimetric map



30 X 60 MINUTE QUADRANGLE  
SHOWING

- Elevations in meters
- Highways, roads and other manmade structures
- Water features
- Woodland areas
- Geographic names



GEOLOGICAL SURVEY

1986

Produced by the United States Geological Survey  
Compiled from USGS 1:24 000-scale topographic maps dated 1942-1981. Planimetry revised from aerial photographs taken 1982 and 1984 and other source data. Revised information not field checked. Map edited 1986  
Projection and 10 000-meter grid, zone 15, Universal Transverse Mercator  
25 000-foot grid ticks based on Arkansas coordinate system, north zone 1927 North American Datum  
To place on the predicted North American Datum 1983, move the projection lines 5 meters south and 12 meters east  
There may be private inholdings within the boundaries of the National or State reservations shown on this map

NATIONAL GEODETIC VERTICAL DATUM OF 1929  
ELEVATIONS SHOWN TO THE NEAREST METER

THIS MAP COMPLIES WITH NATIONAL MAP ACCURACY STANDARDS

CONVERSION TABLE		DECLINATION DIAGRAM		ADJOINING MAPS			
Meters	Feet			1	2	3	
1	3.2808			1	2	3	
2	6.5617			4	5		
3	9.8425						
4	13.1234						
5	16.4042						
6	19.6850						
7	22.9659						
8	26.2467						
9	29.5276						
10	32.8084						
To convert meters to feet multiply by 3.2808		UTM grid convergency (GN) and 1983 magnetic declination (MD)		ADJOINING MAPS			
To convert feet to meters multiply by 0.3048		Diagram is approximate		1	2	3	

FOR SALE BY U.S. GEOLOGICAL SURVEY  
DENVER, COLORADO 80225, OR RESTON, VIRGINIA 22092

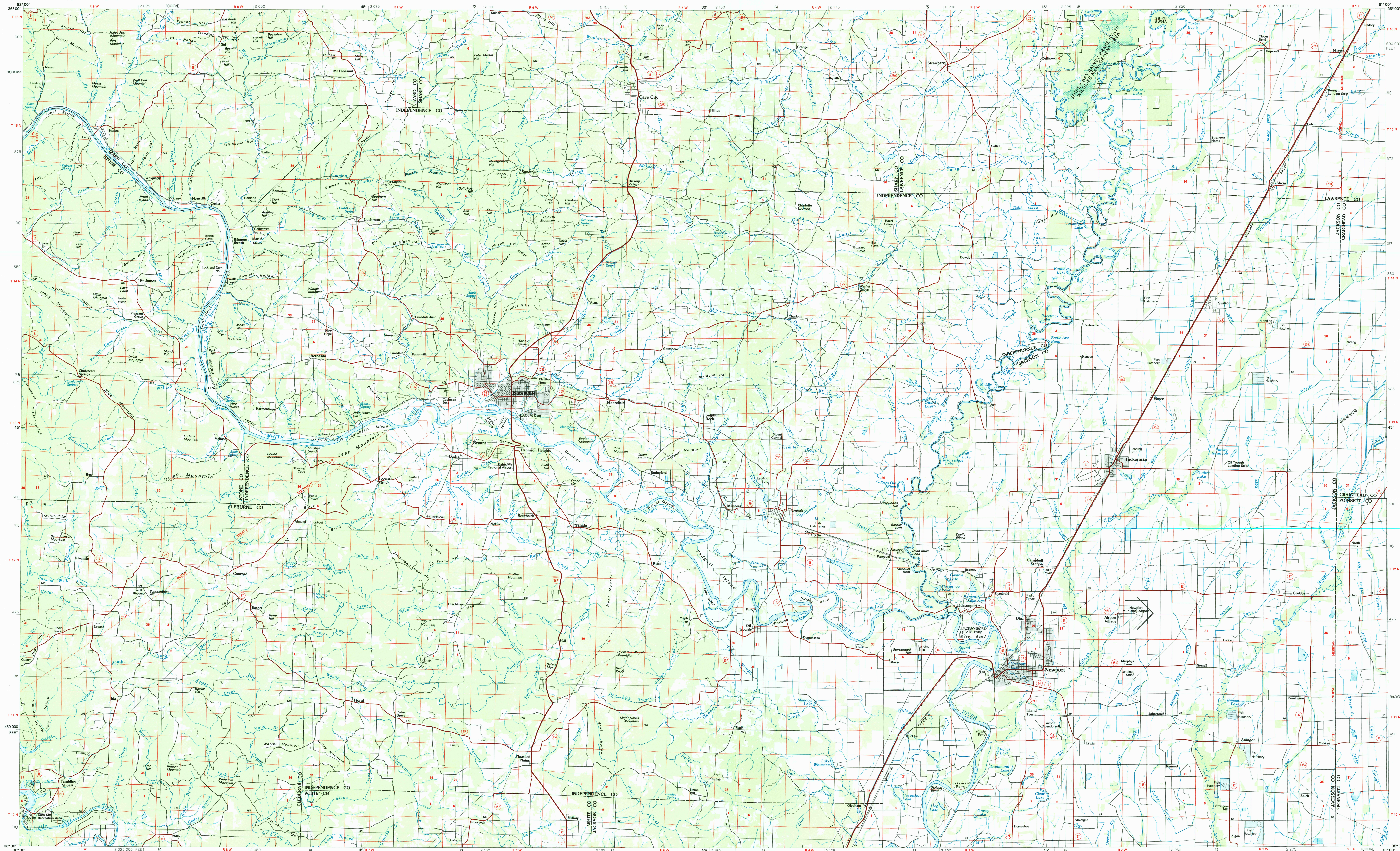
## Topographic Map Symbols

Primary highway, hard surface	
Secondary highway, hard surface	
Light duty road, principal street, hard or improved surface	
Other road or street; trail	
Route marker: Interstate, U.S. State	
National standard gauge, narrow gauge	
Bridge; overpass; underpass	
Tunnel: road; railroad	
Built up area; locality; elevation	
Airport; landing field; landing strip	
National boundary	
State boundary	
County boundary	
National or State reservation boundary	
Land grant boundary	
U.S. public lands survey: range, township, section	
Range, township, section line: projected	
Power transmission line; pipeline	
Dam; dam with lock	
Cemetery; building	
Windmill; water well; spring	
Mine shaft; salt or cave; mine; quarry; gravel pit	
Campground; picnic area; U.S. location monument	
Ruin; cliff swelling	
Disturbed surface: stony mine; bar; sand	
Contours: index; intermediate; supplementary	
Bathymetric contours: index; intermediate	
Stream, lake; perennial; intermittent	
Rapids, large and small; falls, large and small	
Area to be submerged; marsh; swamp	
Land subject to controlled inundation; woodland	
Scrub; mangrove	
Orchard; vineyard	

A pamphlet describing topographic maps is available on request

## BATESVILLE, ARKANSAS

30 X 60 MINUTE SERIES (PLANIMETRIC)



BATESVILLE, ARKANSAS  
35091-E1-PL-100

1986

USGS NMD HISTORICAL MAP

SEP 12 1986

REC'D FILE COPY

• INTERIOR—GEOLOGICAL SURVEY, RESTON, VIRGINIA—1986

SCALE 1:100 000

1 CENTIMETER ON THE MAP REPRESENTS 1 KILOMETER ON THE GROUND