

Blytheville

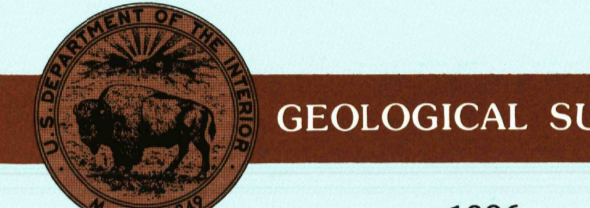
ARKANSAS-TENNESSEE-
MISSOURI

1:100 000-Scale
planimetric map



30 X 60 MINUTE QUADRANGLE
SHOWING

- Elevations in meters
- Highways, roads and other manmade structures
- Water features
- Woodland areas
- Geographic names



1986
TENNESSEE VALLEY AUTHORITY

Produced by Tennessee Valley Authority in cooperation with the United States Geological Survey. Compiled from USGS-TVA 1:24 000-scale topographic maps dated 1961-1983. Planimetry revised from aerial photographs taken 1980-1985 and other source data. Revised information not field checked. Map edited 1986. Projection and 10 000-meter grid, zone 16: Universal Transverse Mercator. 25 000-foot grid ticks based on Tennessee coordinate system and Arkansas coordinate system, north zone 1927 North American Datum. To place on the predicted North American Datum 1983 move the projection lines 6 meters south and 7 meters east. There may be private inholdings within the boundaries of the National or State reservations shown on this map.

NATIONAL GEODETIC VERTICAL DATUM OF 1929
ELEVATIONS SHOWN TO THE NEAREST METER

THIS MAP COMPLIES WITH NATIONAL MAP ACCURACY STANDARDS

CONVERSION TABLE		DECLINATION DIAGRAM		ADJOINING MAPS		
Meters	Feet	GN	MN	1	2	3
1	3.2808			4	5	6
2	6.5617					
3	9.8425					
4	13.1234					
5	16.4042					
6	19.6851					
7	22.9659					
8	26.2468					
9	29.5276					
10	32.8085					
11	36.0893					
12	39.3702					
13	42.6510					
14	45.9319					
15	49.2127					
16	52.4936					
17	55.7744					
18	59.0553					
19	62.3361					
20	65.6170					
21	68.8978					
22	72.1787					
23	75.4595					
24	78.7404					
25	82.0212					
26	85.3021					
27	88.5829					
28	91.8638					
29	95.1446					
30	98.4255					
31	101.7063					
32	104.9872					
33	108.2680					
34	111.5489					
35	114.8297					
36	118.1106					
37	121.3914					
38	124.6723					
39	127.9531					
40	131.2340					
41	134.5148					
42	137.7957					
43	141.0765					
44	144.3574					
45	147.6382					
46	150.9191					
47	154.1999					
48	157.4808					
49	160.7616					
50	164.0425					
51	167.3233					
52	170.6042					
53	173.8850					
54	177.1659					
55	180.4467					
56	183.7276					
57	187.0084					
58	190.2893					
59	193.5701					
60	196.8510					
61	200.1318					
62	203.4127					
63	206.6935					
64	209.9744					
65	213.2552					
66	216.5361					
67	219.8169					
68	223.0978					
69	226.3786					
70	229.6595					
71	232.9403					
72	236.2212					
73	239.5020					
74	242.7829					
75	246.0637					
76	249.3446					
77	252.6254					
78	255.9063					
79	259.1871					
80	262.4680					
81	265.7488					
82	269.0297					
83	272.3105					
84	275.5914					
85	278.8722					
86	282.1531					
87	285.4339					
88	288.7148					
89	291.9956					
90	295.2765					
91	298.5573					
92	301.8382					
93	305.1190					
94	308.4000					
95	311.6808					
96	314.9617					
97	318.2425					
98	321.5234					
99	324.8042					
100	328.0851					

To convert meters to feet multiply by 3.2808
To convert feet to meters multiply by 0.3048

UTM grid convergence (GN and MN magnetic declination) at center of map is in degrees to the right.

1 Paragon 2 Dyer 3 McCreary 4 Crockett 5 Memphis East 6 Sutter

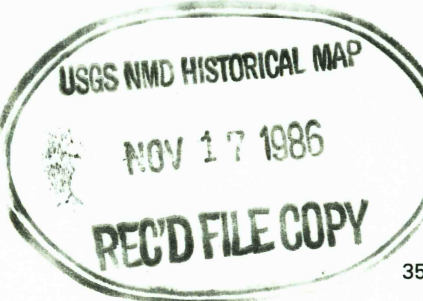
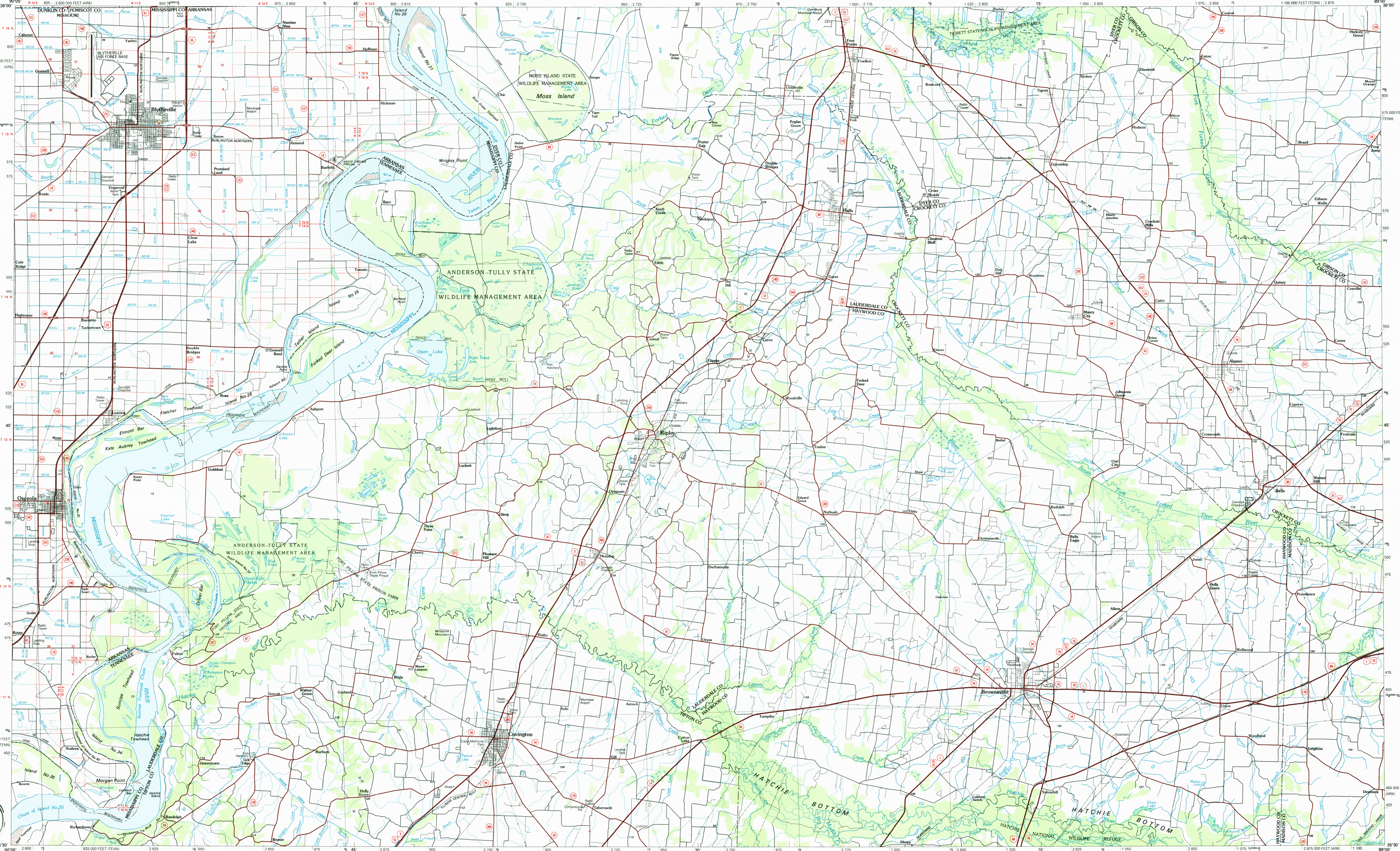
FOR SALE BY U.S. GEOLOGICAL SURVEY, RESTON, VIRGINIA, 22092
TENNESSEE DEPARTMENT OF CONSERVATION, DIVISION OF GEOLOGY,
NASHVILLE, TENN. 37219, AND
U.S. TENNESSEE VALLEY AUTHORITY, CHATTANOOGA, TENN. 37401
OR KNOXVILLE, TENN. 37902

Topographic Map Symbols

- Primary highway, hard surface
- Secondary highway, hard surface
- Light duty road, principal street, hard or improved surface
- Other road or street, trail
- Route marker: Interstate, U. S. State
- Railroad: standard gage, narrow gage
- Bridge: overpass, underpass
- Tunnel: road, railroad
- Built up area: locality, elevation
- Airport: landing field, landing strip
- National boundary
- State boundary
- County boundary
- National or State reservation boundary
- Land grant boundary
- U. S. public lands survey: range, township, section
- Range, township, section line: protected
- Power transmission line, pipeline
- Dam: dam with lock
- Cemetery: building
- Well: water, well, spring
- Mine shaft, edit or cave, mine, quarry, gravel pit
- Campground, picnic area, U. S. location monument
- Ruin: cliff dwelling
- Elevated surface: 800, 1000, 1500, and
- Contours: index, intermediate, supplementary
- Bathymetric contours: index, intermediate
- Stream, lake: perennial, intermittent
- Rapid, large and small, falls, large and small
- Area to be submerged: 800, 1000, 1500, and
- Land subject to controlled inundation, woodland
- Soak, mangrove
- Orchard, vineyard

A pamphlet describing topographic maps is available on request

30 X 60 MINUTE SERIES (PLANIMETRIC)
1:100 000 FEET (TENN.) 1:2875



USGS GEOLOGICAL SURVEY RESTON, VIRGINIA 22092

SCALE 1:100 000
1 CENTIMETER ON THE MAP REPRESENTS 1 KILOMETER ON THE GROUND

BLYTHEVILLE, ARKANSAS-TENNESSEE-MISSOURI
35089-E1-PL-100

1986