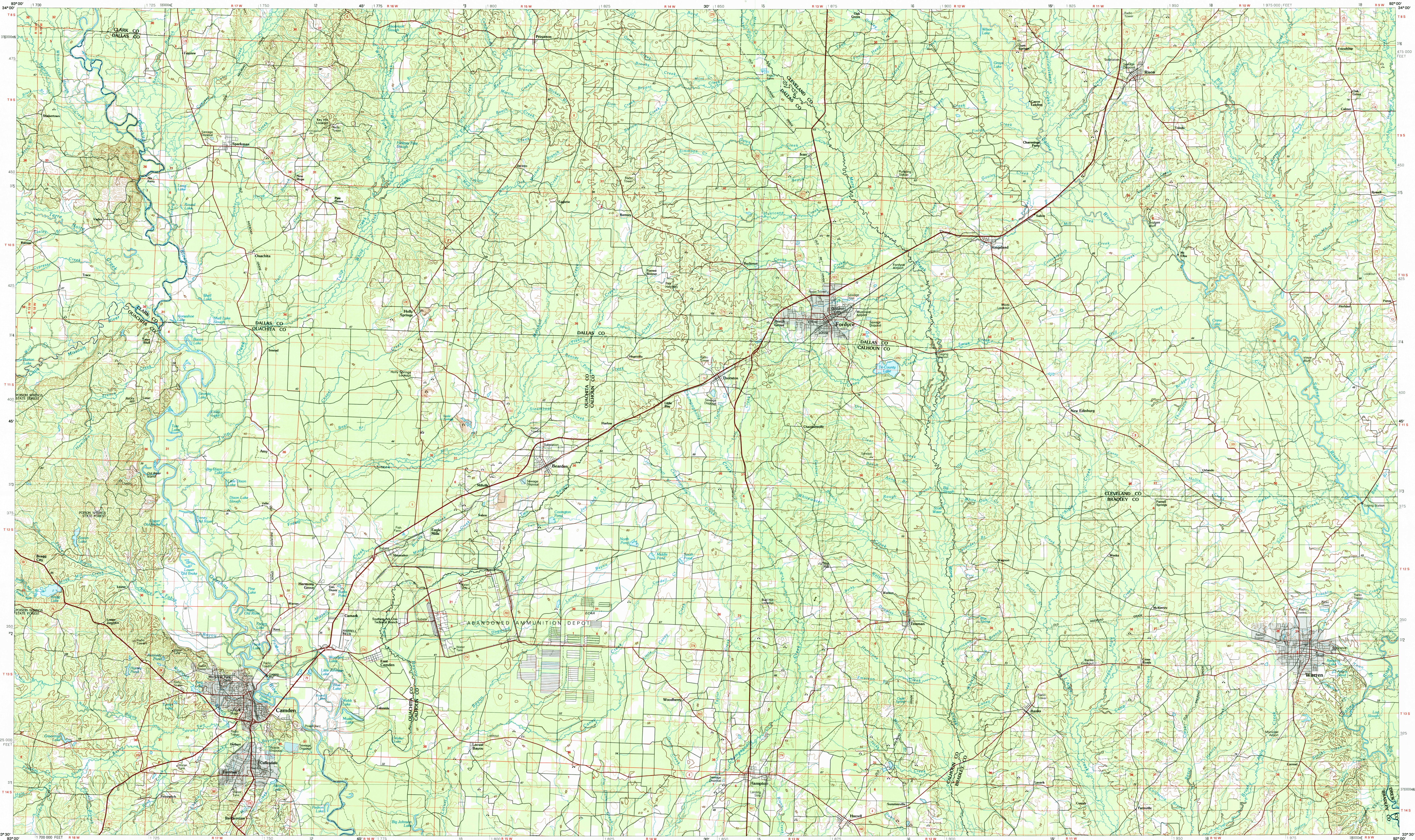


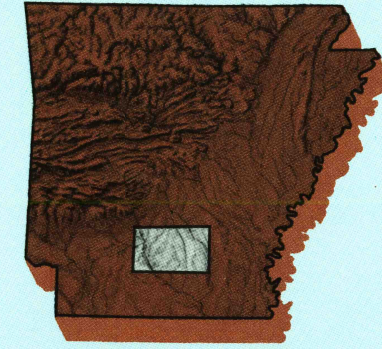
CAMDEN, ARKANSAS



30x60 MINUTE SERIES (TOPOGRAPHIC)

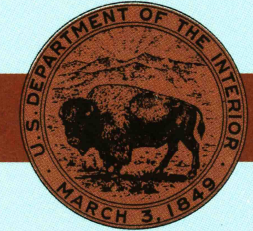
Camden  
ARKANSAS

1:100 000-scale metric  
topographic map



30 X 60 MINUTE QUADRANGLE  
SHOWING

- Contours and elevations in meters
- Highways, roads and other manmade structures
- Water features
- Woodland areas
- Geographic names



GEOLOGICAL SURVEY

1986

Produced by the United States Geological Survey  
Compiled from USGS 1:24 000-scale topographic maps dated 1966-1973. Planimetry revised from aerial photographs taken 1982 and other source data. Revised information not field checked. Map edited 1986.  
Projection and 10 000-meter grid, zone 15, Universal Transverse Mercator  
25 000-foot grid ticks based on Arkansas coordinate system, south zone  
1927 North American Datum  
To place on the predicted North American Datum 1983, move the projection lines 10 meters south and 14 meters east  
There may be private inholdings within the boundaries of the National or State reservations shown on this map

CONTOUR INTERVAL 10 METERS  
SUPPLEMENTARY CONTOUR INTERVAL 5 METERS  
NATIONAL GEODETIC VERTICAL DATUM OF 1929

THIS MAP COMPLIES WITH NATIONAL MAP ACCURACY STANDARDS

CONVERSION TABLE		DECLINATION DIAGRAM		ADJOINING MAPS		
Meters	Feet			1	2	3
1	3.2808			4	5	
2	6.5617			6	7	8
3	9.8425					
4	13.1234					
5	16.4042					
6	19.6850					
7	22.9658					
8	26.2466					
9	29.5274					
10	32.8082					
To convert meters to feet multiply by 3.2808		UTM grid convergence (GN and 1986 magnetic declination) (M) at center of map. Diagram is approximate		1 Ardmore 2 Mahan 3 De Witt 4 Hope 5 Dumas 6 Marietta 7 El Dorado 8 Crosscut		
To convert feet to meters multiply by 0.3048						

FOR SALE BY U.S. GEOLOGICAL SURVEY  
DENVER, COLORADO 80225, OR RESTON, VIRGINIA 22092  
SEP 13 1988  
REC'D FILE COPY

Topographic Map Symbols

Primary highway, hard surface.....	
Secondary highway, hard surface.....	
Light duty road, principal street, hard or improved surface.....	
Other road or street, trail.....	
Route marker: Interstate, U.S. State.....	
Railroad: standard gauge, narrow gauge.....	
Bridge, overpass, underpass.....	
Tunnel: road, railroad.....	
Built up area, locality, elevation.....	
Airport: landing field, landing strip.....	
National boundary.....	
State boundary.....	
County boundary.....	
National or State reservation boundary.....	
Land grant boundary.....	
U.S. public lands survey: range, township, section.....	
Range, township, section line, contracted.....	
Power transmission line, pipeline.....	
Dam, dam with lock.....	
Cemetery, building.....	
Wellhead, water well, spring.....	
Mine shaft, adit or cave, mine, quarry, gravel pit.....	
Campground, picnic area; U.S. location monument.....	
Ruins; cliff dwelling.....	
Disturbed surface: strip mine, low, sand.....	
Contours: index, intermediate, supplementary.....	
Bathymetric contours: index, intermediate.....	
Stream, lake: perennial, intermittent.....	
Rapids, large and small; falls, large and small.....	
Area to be submerged; marsh, swamp.....	
Land subject to controlled inundation, woodland.....	
Scrub, mangrove.....	
Orchard; vineyard.....	

A pamphlet describing topographic maps is available on request

CAMDEN, ARKANSAS  
33092-E1-TM-100

1986