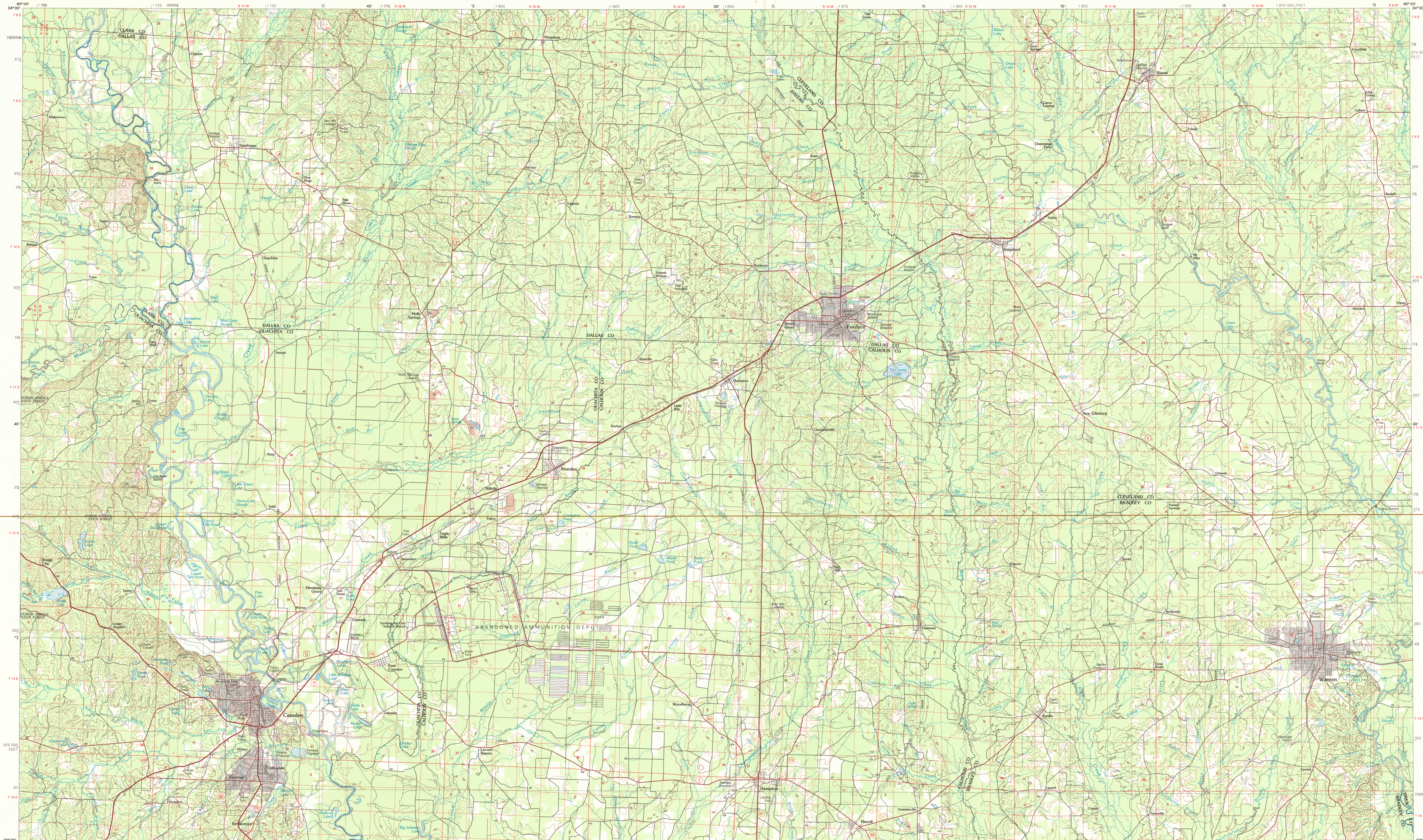


CAMDEN, ARKANSAS

30x60 MINUTE SERIES (TOPOGRAPHIC)



33092-E1-TM-100

Camden ARKANSAS

1:100 000-scale metric topographic map

30 X 60 MINUTE QUADRANGLE SHOWING

- Contours and elevations in meters
- Highways, roads and other manmade structures
- Water features
- Woodland areas
- Geographic names

GEOLOGICAL SURVEY

1986

Produced by the United States Geological Survey
 Compiled from USGS 1:250 000-scale topographic maps dated 1966-1973. Planimetry revised from aerial photographs taken 1982 and other source data. Revised information not field checked. Map edited 1986.
 Projection and 10 000-meter grid, zone 15, Universal Transverse Mercator
 25 000-foot grid ticks based on Arkansas coordinate system, south zone
 1927 North American Datum
 To place on the predicted North American Datum 1983, move the projection lines 10 meters south and 14 meters east
 There may be private holdings within the boundaries of the National or State reservations shown on this map

CONTOUR INTERVAL 10 METERS
 SUPPLEMENTARY CONTOUR INTERVAL 5 METERS
 NATIONAL GEODETIC VERTICAL DATUM OF 1929

THIS MAP COMPLES WITH NATIONAL MAP ACCURACY STANDARDS

CONVERSION TABLE		DECLINATION DIAGRAM		ADJOINING MAPS		
Meters	Feet	GN	IN	1	2	3
1	3.2808		10° 10' 00" S 10° 10' 00" S 10° 10' 00" S 10° 10' 00" S 10° 10' 00" S 10° 10' 00" S 10° 10' 00" S 10° 10' 00" S 10° 10' 00" S 10° 10' 00" S	1	2	3
2	6.5616			4	5	
3	9.8424			6	7	
4	13.1232			8		
5	16.4040					
6	19.6848					
7	22.9656					
8	26.2464					
9	29.5272					
10	32.8080					

To convert meters to feet
 UTM grid convergency
 To convert feet to meters
 declination (M)
 Diagram is approximate

1. Adakshala
 2. Mahan
 3. De Wile
 4. Hope
 5. Shreve
 6. Magnolia
 7. El Dorado
 8. Crossett

FOR SALE BY U. S. GEOLOGICAL SURVEY
 DENVER, COLORADO 80225, OR RESTON, VIRGINIA 22092
 U.S.G.S. (TM) 1:100,000
 SEP 13 1988
 REC'D FILE COPY

Topographic Map Symbols

Primary highway, hard surface	
Secondary highway, hard surface	
Light duty road, principal street, hard or improved surface	
Other road or street, bad	
Road marker, Interstate, U.S. State	
Railroad, standard gauge, narrow gauge	
Bridge, overpass, underpass	
Tunnel, road, railroad	
Built up area, locality, elevation	
Airport, landing field, landing strip	
Nation boundary	
State boundary	
County boundary	
Nation or State reservation boundary	
Land grant boundary	
U.S. public lands survey: range, township, section	
Range, township, section line, protected	
Power transmission line, pipeline	
Dam, dam with lock	
Cemetery, building	
Whitish water wall, spring	
Mine shaft, old or new, mine, quarry, gravel pit	
Campground, picnic area, U.S. location monument	
Ruins, old dwelling	
Disturbed surface: strip mine, lava, sand	
Contours: index, intermediate, supplementary	
Bathymetric contours: index, intermediate	
Power transmission line, pipeline	
Rapid, large and small; falls, large and small	
Area to be submerged; marsh, swamp	
Land subject to controlled inundation; woodland	
Swamp, bog	
Outcrop, vineyard	

A pamphlet describing topographic maps is available on request

SCALE 1:100 000
 CONTOUR INTERVAL 10 METERS
 SUPPLEMENTARY CONTOUR INTERVAL 5 METERS

KILOMETERS 0 1 2 3 4 5 6 7 8 9 10 11 12 13 14 15 16 17 18 19 20
 MILES 0 1 2 3 4 5 6 7 8 9 10 11 12 13

1 CENTIMETER ON THE MAP REPRESENTS 1 KILOMETER ON THE GROUND
 1 INCH ON THE MAP REPRESENTS 25,000 FEET ON THE GROUND

CAMDEN, ARKANSAS
 33092-E1-TM-100
 1986