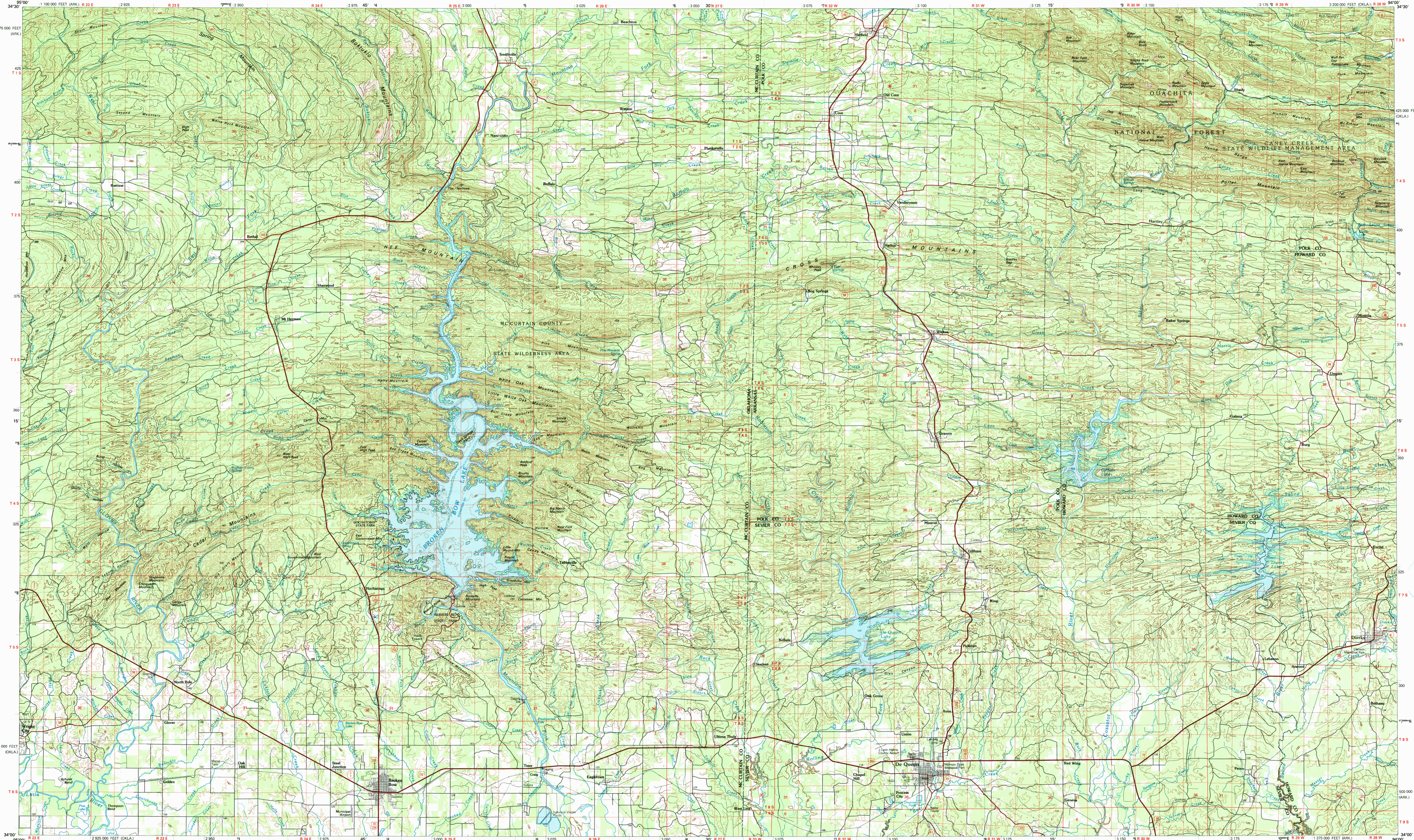


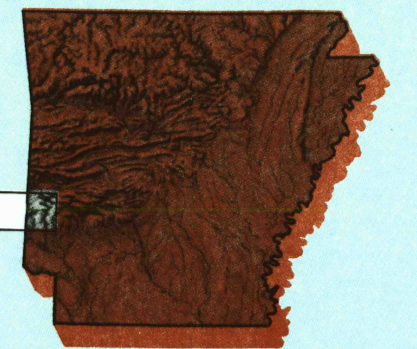
DE QUEEN, ARKANSAS-OKLAHOMA

30 X 60 MINUTE SERIES (TOPOGRAPHIC)



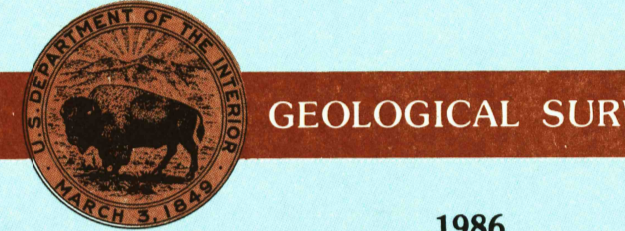
De Queen ARKANSAS-OKLAHOMA

1:100 000-scale metric topographic map



30 X 60 MINUTE QUADRANGLE SHOWING

- Contours and elevations in meters
- Highways, roads and other manmade structures
- Water features
- Woodland areas
- Geographic names



Produced by the United States Geological Survey  
Compiled from USGS 1:24 000-scale and 1:62 500-scale topographic maps dated 1959-1982. Planimetry revised from aerial photographs taken 1980 and other source data. Revised information not field checked. Map edited 1986.

Projection and 10 000-meter grid, zone 15  
Universal Transverse Mercator  
25 000-foot grid ticks based on Oklahoma coordinate system, south zone and Arkansas coordinate system, south zone 1927 North American Datum  
To place on the predicted North American Datum 1983 move the projection lines 7 meters south and 19 meters east  
There may be private inholdings within the boundaries of the National or State reservations shown on this map

CONTOUR INTERVAL 20 METERS  
NATIONAL GEODETIC VERTICAL DATUM OF 1929  
ELEVATIONS SHOWN TO THE NEAREST METER

THIS MAP COMPLIES WITH NATIONAL MAP ACCURACY STANDARDS

CONVERSION TABLE		DECLINATION DIAGRAM		ADJOINING MAPS		
Meters	Feet	Diagram		1	2	3
1	3.2808	[Diagram]		4	5	
2	6.5617	[Diagram]		6	7	8
3	9.8425	[Diagram]				
4	13.1234	[Diagram]				
5	16.4042	[Diagram]				
6	19.6850	[Diagram]				
7	22.9659	[Diagram]				
8	26.2467	[Diagram]				
9	29.5275	[Diagram]				
10	32.8084	[Diagram]				

To convert meters to feet multiply by 3.2808  
To convert feet to meters multiply by 0.3048

UTM grid convergence (GCM) and 1983 magnetic declination (MD) at center of map Diagram is approximate

1 Mc Alester  
2 Males  
3 Lake Ouachita  
4 Arkadelphia  
5 Arkadelphia  
6 Fayette  
7 Hope  
8 Hope

FOR SALE BY U.S. GEOLOGICAL SURVEY, DENVER, COLORADO 80225 OR RESTON, VIRGINIA 22092

MAR 1 1991  
REC'D FILE COPY

Topographic Map Symbols

- Primary highway, hard surface
- Secondary highway, hard surface
- Light duty road, principal street, hard or improved surface
- Other road or street, trail
- Route marker: interstate, U. S.; State
- Railroad: standard gauge, narrow gauge
- Bridge, covered, underpass
- Tunnel: road; railroad
- Built up area, locality, elevation
- Airport; landing field; landing strip
- National boundary
- State boundary
- County boundary
- National or State reservation boundary
- Land grant boundary
- U. S. public lands survey: range, township, section
- Range, township, section line; protected
- Power transmission line; pipeline
- Dam; dam with lock
- Cemetery; building
- Wetland; water well; spring
- Mine shaft, cast or core; mine, quarry, gravel pit
- Campground; picnic area; U. S. location monument
- Ruins; cliff dwelling
- Disturbed surface: strip mine, lava, sand
- Contour: index, intermediate, supplementary
- Bathymetric contour: index, intermediate
- Stream, lake: perennial, intermittent
- Rapids, large and small; falls, large and small
- Area to be submerged; marsh, swamp
- Land subject to controlled inundation; woodland
- Scrub; mangrove
- Orchard; vineyard

A simplified describing topographic maps is available on request