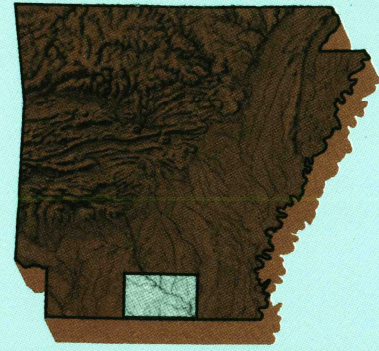


# El Dorado

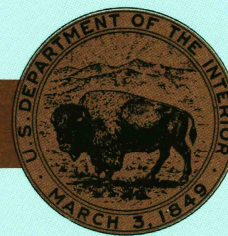
## ARKANSAS-LOUISIANA

1:100 000-scale  
planimetric map



30 X 60 MINUTE QUADRANGLE  
SHOWING

- Elevations in meters
- Highways, roads and other manmade structures
- Water features
- Woodland areas
- Geographic names



GEOLOGICAL SURVEY

1985

Produced by the United States Geological Survey  
Compiled from USGS 1:24 000-scale topographic maps dated 1962-1981. Planimetry revised from aerial photographs taken 1983 and other source data. Revised information not field checked. Map edited 1985.  
Projection and 10 000-meter grid, zone 15, Universal Transverse Mercator  
25 000-foot grid ticks based on Arkansas coordinate system, south zone and Louisiana coordinate system, north zone 1927 North American Datum  
To place on the predicted North American Datum 1983, move the projection lines 11 meters south and 14 meters east  
There may be private inholdings within the boundaries of the National or State reservations shown on this map

NATIONAL GEODETIC VERTICAL DATUM OF 1929  
ELEVATIONS SHOWN TO THE NEAREST METER

THIS MAP COMPLIES WITH NATIONAL MAP ACCURACY STANDARDS

CONVERSION TABLE		DECLINATION DIAGRAM	ADJOINING MAPS				
Meters	Feet		1	2	3		
1	3.2808						
2	6.5617						
3	9.8425						
4	13.1234						
5	16.4042						
6	19.6850						
7	22.9659						
8	26.2467						
9	29.5275						
10	32.8084						
To convert meters to feet multiply by 3.2808		To convert feet to meters multiply by 0.3048					
			1	2	3		
			4	5	6		
			7	8	9		
			10	11	12		
			13	14	15		
			16	17	18		
			19	20	21		
			22	23	24		

FOR SALE BY U.S. GEOLOGICAL SURVEY  
DENVER, COLORADO 80225, OR RESTON, VIRGINIA 22092

USGS NMD HISTORICAL MAP

MAY 0 2 1986

REC'D FILE COPY

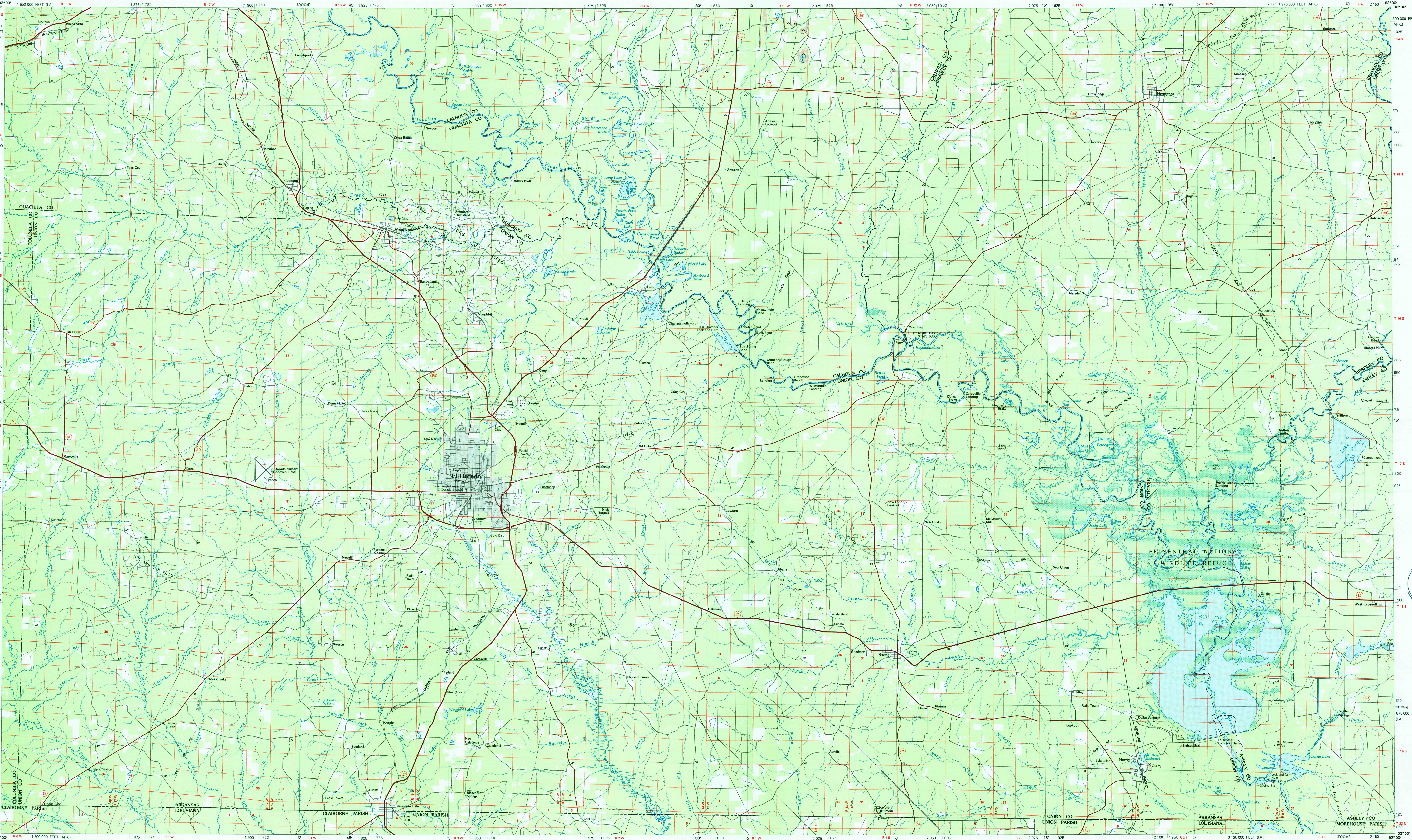
### Topographic Map Symbols

Primary highway, hard surface.....	
Secondary highway, hard surface.....	
Light duty road, principal street, hard or improved surface.....	
Other road or street; trail.....	
Route marker: Interstate; U.S.; State.....	
Railroad: standard gage; narrow gage.....	
Bridge: overpass; underpass.....	
Tunnel: road; railroad.....	
Built up area; locality: elevation.....	
Airport; landing field; landing strip.....	
National boundary.....	
State boundary.....	
County boundary.....	
National or State reservation boundary.....	
Land grant boundary.....	
U.S. public lands survey: range, township; section.....	
Range, township; section line: protracted.....	
Power transmission line; pipeline.....	
Dam; dam with lock.....	
Cemetery; building.....	
Windmill; water well; spring.....	
Mine shaft; adit or cave; mine, quarry; gravel pit.....	
Compositional; picnic area; U.S. location monument.....	
Ruin; cliff dwelling.....	
Distorted surface: strip mine, lava; sand.....	
Contours: index; intermediate; supplementary.....	
Bathymetric contours: index; intermediate.....	
Stream, lake, perennial; intermittent.....	
Rapids, large and small; falls, large and small.....	
Land subject to controlled inundation; woodland.....	
Straw; mangrove.....	
Drained; viewshed.....	

A pamphlet describing topographic maps is available on request

## EL DORADO, ARKANSAS-LOUISIANA

30 X 60 MINUTE SERIES (PLANIMETRIC)



• INTERIOR: GEOLOGICAL SURVEY, RESTON, VIRGINIA-1986

KILOMETERS 1 0 1 2 3 4 5 6 7 8 9 10 11 12 13 14 15 16 17 18 19 20  
MILES 1 0 1 2 3 4 5 6 7 8 9 10 11 12 13

SCALE 1:100 000

1 CENTIMETER ON THE MAP REPRESENTS 1 KILOMETER ON THE GROUND  
1:100 000  
1000 0 10000 20000 30000 40000 50000 60000 70000 FEET

## EL DORADO, ARKANSAS-LOUISIANA

33092-A1-PL-100

1985