

MAGNOLIA, ARKANSAS-LOUISIANA

30 X 60 MINUTE SERIES (PLANIMETRIC)

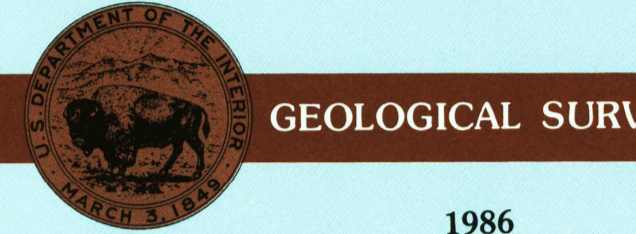
Magnolia ARKANSAS-LOUISIANA

1:100 000-scale planimetric map



30 X 60 MINUTE QUADRANGLE SHOWING

- Elevations in meters
- Highways, roads and other manmade structures
- Water features
- Woodland areas
- Geographic names



1986

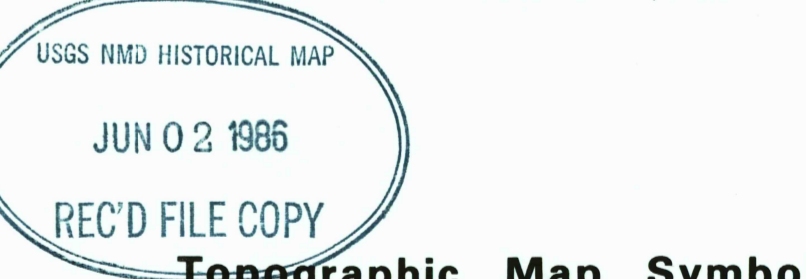
Produced by the United States Geological Survey
 Compiled from USGS 1:24 000-scale topographic maps dated 1952-1978. Planimetry revised from aerial photographs taken 1963 and other source data. Revised information not field checked. Map edited 1986.
 Projection and 10 000-meter grid, zone 15, Universal Transverse Mercator
 25 000-foot grid ticks based on Arkansas coordinate system, south zone and Louisiana coordinate system, north zone 1927 North American Datum
 To place on the predicted North American Datum 1983, move the projection lines 10 meters south and 17 meters east
 There may be private inholdings within the boundaries of the National or State reservations shown on this map

NATIONAL GEODETIC VERTICAL DATUM OF 1929

THIS MAP COMPLES WITH NATIONAL MAP ACCURACY STANDARDS

CONVERSION TABLE		DECLINATION DIAGRAM		ADJOINING MAPS	
Meters	Feet	MAGNETIC DECLINATION		MAP NUMBER	
1	3.2808	1986		1	2
2	6.5617	1987		4	5
3	9.8425	1988		6	7
4	13.1234	1989		8	9
5	16.4042	1990			
6	19.6850	1991			
7	22.9659	1992			
8	26.2467	1993			
9	29.5275	1994			
10	32.8084	1995			

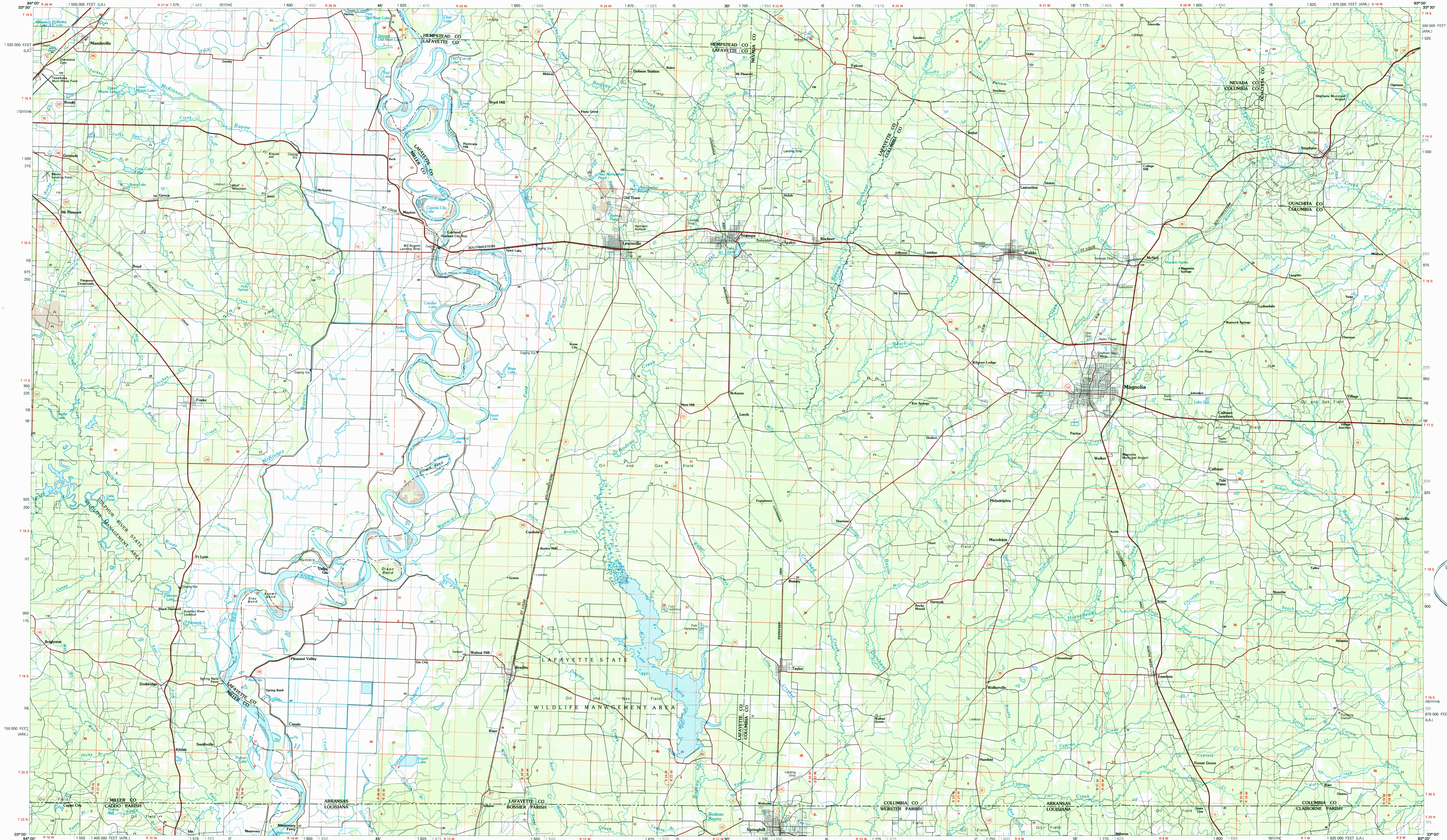
FOR SALE BY U.S. GEOLOGICAL SURVEY DENVER, COLORADO 80225, OR RESTON, VIRGINIA 22092



Topographic Map Symbols

- Primary highway, hard surface
- Secondary highway, hard surface
- Light duty road, principal street, hard or improved surface
- Other road or street, road
- Route marker, interstate, U.S. State
- Railroad, standard gage, narrow gage
- Bridge, overpass, underpass
- Canal, road, railroad
- Built up area, width, elevation
- Airport, landing field, landing strip
- National boundary
- State boundary
- County boundary
- National or State reservation boundary
- Land grant boundary
- U.S. public lands survey, range, township, section
- Range, township, section line, protracted
- Power transmission line, pipeline
- Dam, dam with lock
- Cemetery, building
- Windsail, water well, spring
- Mine shaft, adit or cave, mine, quarry, gravel pit
- Contaminated, picnic area, U.S. location monument
- Flume, cliff dwelling
- Distorted surface, strip mine, lava, sand
- Contours: index, intermediate, supplementary
- Bathymetric contours, index, intermediate
- Stream, lake, perennial, intermittent
- Rapids, large and small, falls, large and small
- Area to be submerged, marsh, swamp
- Land subject to controlled inundation, woodlands
- Sprawl, mangrove
- Orchard, vineyard

A pamphlet describing topographic maps is available on request



SCALE 1:100 000
 1 CENTIMETER ON THE MAP REPRESENTS 1 KILOMETER ON THE GROUND
 KILOMETERS 0 1 2 3 4 5 6 7 8 9 10 11 12 13 14 15 16 17 18 19 20
 MILES 0 1 2 3 4 5 6 7 8 9 10 11 12 13 14 15 16 17 18 19 20
 1:100 000
 1 CM = 1 KM
 1 INCH = 1 MILE

MAGNOLIA, ARKANSAS-LOUISIANA 33093-A1-PL-100