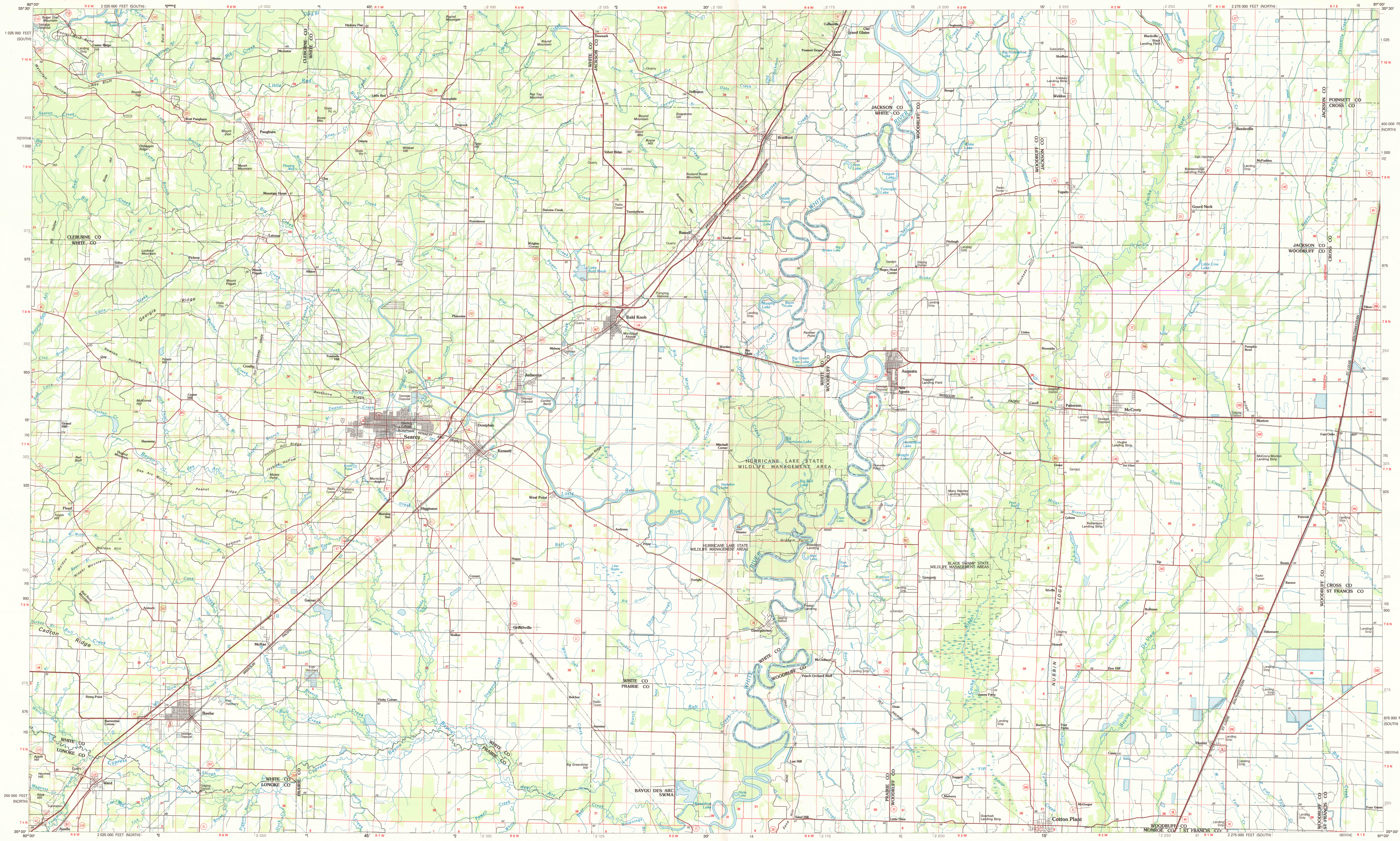


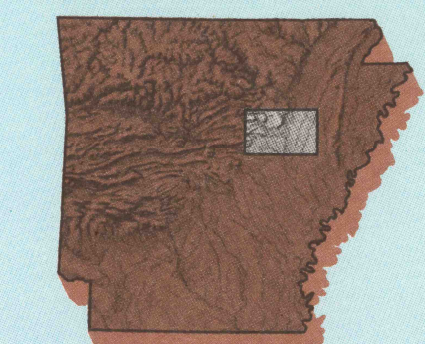
SEARCY, ARKANSAS

30 X 60 MINUTE SERIES (PLANIMETRIC)



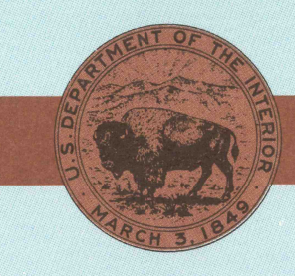
Searcy ARKANSAS

1:100 000-scale planimetric map



30 X 60 MINUTE QUADRANGLE SHOWING

- Elevations in meters
- Highways, roads and other manmade structures
- Water features
- Woodland areas
- Geographic names



GEOLOGICAL SURVEY

1986

Produced by the United States Geological Survey
 Compiled from USGS 1:24 000-scale topographic maps dated 1962-1981. Planimetry revised from aerial photographs taken 1963-1964 and other source data. Revised information not field checked. Map edited 1986.
 Projection and 10 000-meter grid, zone 15, Universal Transverse Mercator
 25 000-foot grid ticks based on Arkansas coordinate system, north and south zones
 1927 North American Datum
 To place on the predicted North American Datum 1983, move the projection lines 7 meters south and 12 meters east
 There may be private inholdings within the boundaries of the National or State reservations shown on this map

NATIONAL GEODETIC VERTICAL DATUM OF 1929 ELEVATIONS SHOWN TO THE NEAREST METER

THIS MAP COMPLIES WITH NATIONAL MAP ACCURACY STANDARDS

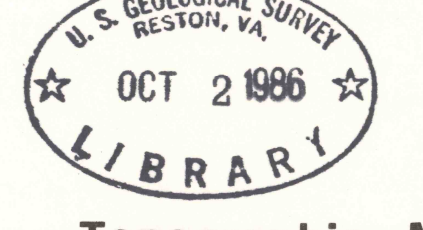
CONVERSION TABLE		DECLINATION DIAGRAM		ADJOINING MAPS	
Meters	Feet	on	by	1	2
1	3.2808			4	5
2	6.5617			5	6
3	9.8425			6	7
4	13.1234			7	8
5	16.4042			8	
6	19.6850			9	
7	22.9659			10	
8	26.2467				
9	29.5275				
10	32.8084				

To convert meters to feet multiply by 3.2808
 To convert feet to meters multiply by 0.3048

UTM grid convergence (GN) will be magnetic declination (MD) at center of map
 Diagram is approximate

1	Mountain View
2	Batesville
3	Jonesboro
4	Conway
5	Memphis West
6	Little Rock
7	Brinkley
8	Helena

FOR SALE BY U.S. GEOLOGICAL SURVEY DENVER, COLORADO 80225, OR RESTON, VIRGINIA 22092



Topographic Map Symbols

- Primary highway, hard surface
- Secondary highway, hard surface
- Light duty road, principal street, hard or improved surface
- Other road or street, trail
- Route marker, international, U.S.; State
- Railroad, standard gage, narrow gage
- Bridge, overpass, underpass
- Tunnel, road, railroad
- Built up area, locality, elevation
- Airport, landing field, landing strip
- National boundary
- State boundary
- County boundary
- National or State reservation boundary
- Land grant boundary
- U.S. public lands survey, range, township, section
- Range, township, section line, protected
- Power transmission line, pipeline
- Dam, dam with lock
- Cemetery, building
- Wellhead, water well, spring
- Mine shaft, adit or cave, mine, quarry, gravel pit
- Campground, picnic area, U.S. location monument
- Ruin, cliff dwelling
- Distorted surface, strip mine, lava, sand
- Contour, index, intermediate, supplementary
- Bathymetric contour, index, intermediate
- Stream, lake, perennial, intermittent
- Rapids, large and small; falls, large and small
- Area to be submerged, marsh, swamp
- Land subject to controlled inundation, woodland
- Scrub, mangrove
- Orchard, vineyard

A pamphlet describing topographic maps is available on request
 UNITED STATES, TOPO. 1:100,000
 Sheet Searcy, AR, 1986
 Copy 1



SEARCY, ARKANSAS 35091-A1-PL-100

1986