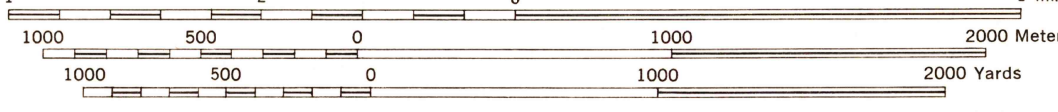


SCALE 1:24,000



CONTOUR INTERVAL 20 FEET
 DATUM IS 1929 MEAN SEA LEVEL
 TRANSVERSE MERCATOR PROJECTION
 1927 NORTH AMERICAN DATUM

LINES SHOWN IN RED ARE PUBLIC LAND SURVEY LINES

Prepared under the direction of the Chief of Engineers by the Corps of Engineers, U. S. Army Map Service (AM), Washington, D. C. Compiled in 1948 by photogrammetric (multiplex) methods. Aerial photography November 1946. Horizontal and vertical control by C.E. USGS and USCGS. Minor political boundaries by the Bureau of Land Management. Public land survey lines are based on the Fifth Principal Meridian. Map file checked. This map complies with the national standard map accuracy requirements.

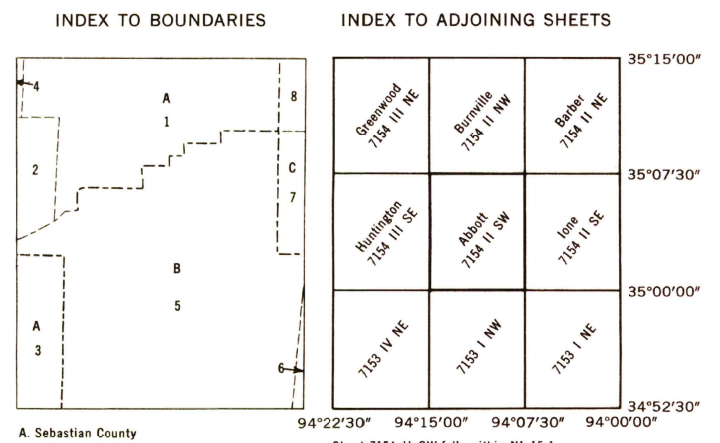
LEGEND

ROAD DATA 1947

In developed areas, only through roads are classified

Hard surface, heavy duty road, four or more lanes wide	Loose surface, graded and drained, or narrow hard surface road
Hard surface, heavy duty road: Two lanes wide; Three lanes wide	Improved dirt road or street
Hard surface, medium duty road, four or more lanes wide	Unimproved dirt road; Trail
Hard surface, medium duty road: Two lanes wide; Three lanes wide	Route markers: Federal, State
Standard gauge railroad	Horizontal control point
Narrow gauge railroad	Bench mark, monumented
Railroad in street	Bench mark, non-monumented
Carline	Spot elevation in feet: Checked; Unchecked
National boundary	Woods or brushwood
State boundary (with monument)	Vineyard; Orchard
County boundary	Intermittent lake
Township boundary	Intermittent stream: Dam
Corporate limits	Swamp, marsh
Reservation boundary	Rapids; Falls
Public land survey line, reliable	Large rapids and falls
Public land survey line, unreliable	

FOR SALE BY U. S. GEOLOGICAL SURVEY, DENVER, COLORADO 80225, OR WASHINGTON, D. C. 20242
 A FOLDER DESCRIBING TOPOGRAPHIC MAPS AND SYMBOLS IS AVAILABLE ON REQUEST



- A. Sebastian County
- 1. State Township
- 2. Diamond Township
- 3. Superior Township
- 4. Prairie Township
- 5. Scott County
- 6. Lewis Township
- 7. Tomlinson Township
- 8. Logan County
- 9. Tomlinson County
- 10. Barber County

USGS
 HISTORICAL FILE
 TOPOGRAPHIC DIVISION

ABBOTT, ARKANSAS
 N3500-W9407.5/7.5
 1948

TRUE NORTH
 MAGNETIC NORTH
 APPROXIMATE MEAN
 DECLINATION, 1948