

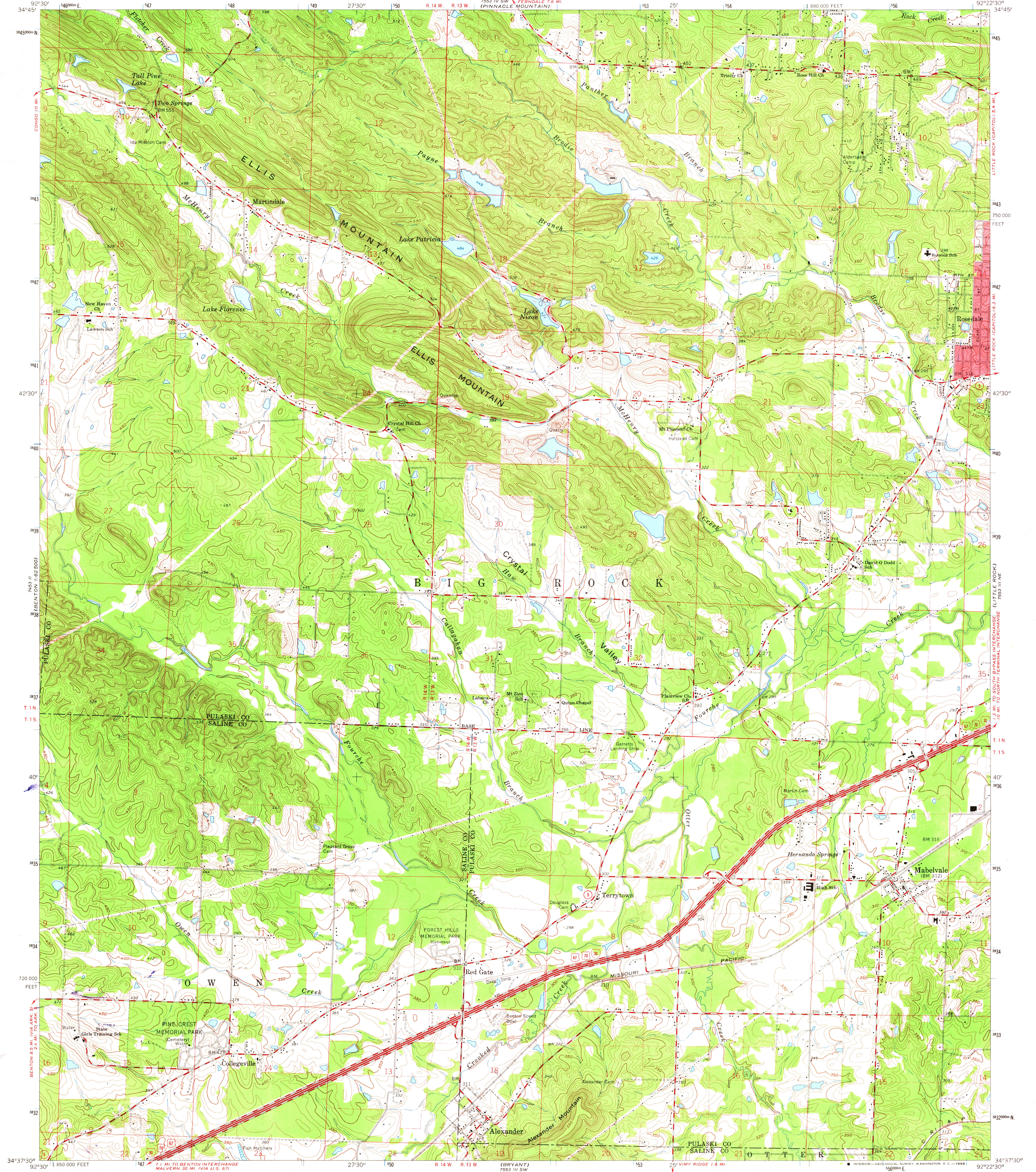
243 15 E  
(FERNDALE)

UNITED STATES  
DEPARTMENT OF THE INTERIOR  
GEOLOGICAL SURVEY

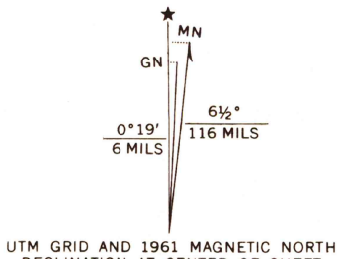
METROPOLITAN AREA PLANNING  
COMMISSION OF PULASKI COUNTY

ALEXANDER QUADRANGLE  
ARKANSAS  
7.5 MINUTE SERIES (TOPOGRAPHIC)  
NW 1/4 ALEXANDER 15' QUADRANGLE

7553 IV SE  
(NORTH LITTLE ROCK)



Mapped, edited, and published by the Geological Survey  
Control by USGS and USC&GS  
Topography by photogrammetric methods from aerial  
photographs taken 1960. Field checked 1961  
Polyconic projection. 1927 North American datum  
10,000-foot grid based on Arkansas coordinate system, south zone  
1000-meter Universal Transverse Mercator grid ticks,  
zone 15, shown in blue  
Red tint indicates area in which only landmark buildings are shown  
Fine red dashed lines indicate selected fence and field lines where  
generally visible on aerial photographs. This information is unchecked



THIS MAP COMPLIES WITH NATIONAL MAP ACCURACY STANDARDS  
FOR SALE BY U.S. GEOLOGICAL SURVEY, DENVER, COLORADO 80225 OR WASHINGTON, D. C. 20242  
AND BY THE ARKANSAS GEOLOGICAL AND CONSERVATION COMMISSION, LITTLE ROCK, ARKANSAS  
A FOLDER DESCRIBING TOPOGRAPHIC MAPS AND SYMBOLS IS AVAILABLE ON REQUEST

USGS  
Historical File  
Topographic Division



U.S.G.S.  
TOPOGRAPHIC DIVISION

ROAD CLASSIFICATION  
Heavy-duty ——— Light-duty ———  
Medium-duty ——— Unimproved dirt ———  
Interstate Route — U.S. Route — State Route

ALEXANDER, ARK.  
NW 1/4 ALEXANDER 15' QUADRANGLE  
N 3437.5—W 9222.5/7.5

1961  
AMS 7553 III NW—SERIES V884

3045