

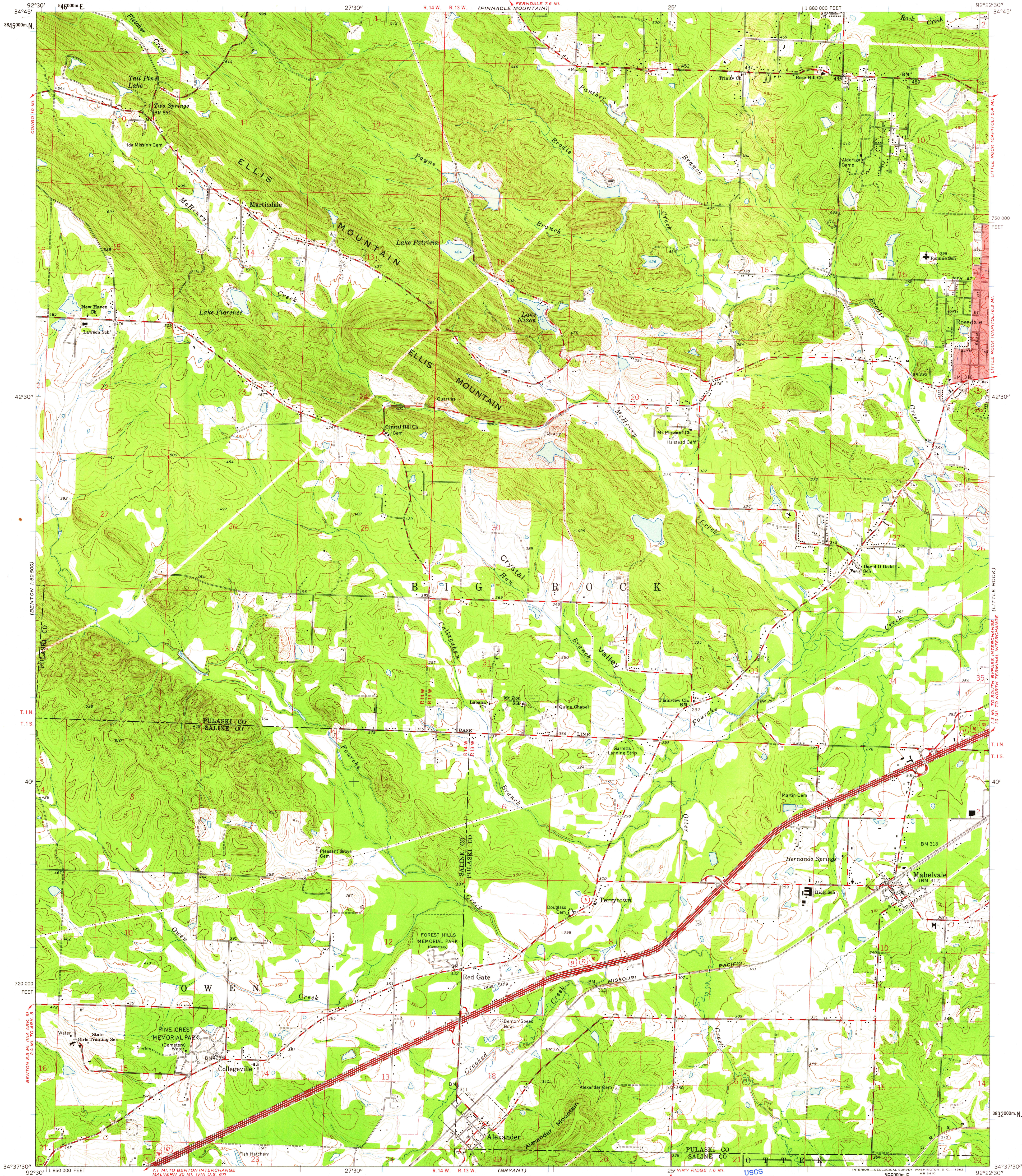
(BENTON 1:125,000)

UNITED STATES  
DEPARTMENT OF THE INTERIOR  
GEOLOGICAL SURVEY

METROPOLITAN AREA PLANNING  
COMMISSION OF PULASKI COUNTY

ALEXANDER QUADRANGLE  
ARKANSAS  
7.5 MINUTE SERIES (TOPOGRAPHIC)

(NORTH LITTLE ROCK)



Mapped, edited, and published by the Geological Survey

Control by USGS and USC&GS

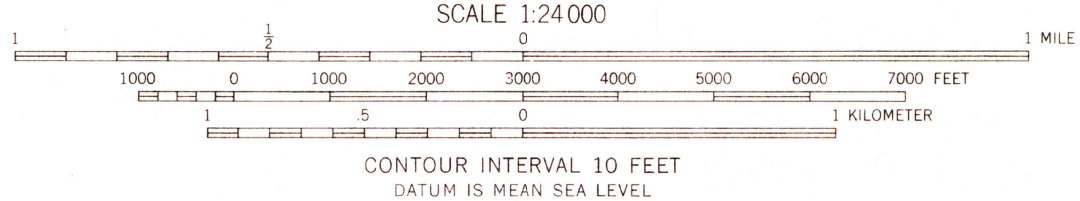
Topography by photogrammetric methods from aerial  
photographs taken 1960. Field checked 1961

Polyconic projection. 1927 North American datum  
10,000-foot grid based on Arkansas coordinate system, south zone  
1000-meter Universal Transverse Mercator grid ticks,  
zone 15, shown in blue

Red tint indicates area in which only landmark buildings are shown

Fine red dashed lines indicate selected fence and field lines where  
generally visible on aerial photographs. This information is unchecked

TRUE NORTH  
MAGNETIC NORTH  
APPROXIMATE MEAN  
DECLINATION, 1961



THIS MAP COMPLIES WITH NATIONAL MAP ACCURACY STANDARDS  
FOR SALE BY U. S. GEOLOGICAL SURVEY, DENVER 25, COLORADO OR WASHINGTON 25, D. C.  
AND BY THE ARKANSAS GEOLOGICAL AND CONSERVATION COMMISSION, LITTLE ROCK, ARKANSAS  
A FOLDER DESCRIBING TOPOGRAPHIC MAPS AND SYMBOLS IS AVAILABLE ON REQUEST

USGS  
Historical File  
Topographic Division



ROAD CLASSIFICATION  
Heavy-duty ———— Light-duty ————  
Medium-duty ———— Unimproved dirt ————  
Interstate Route U.S. Route State Route

USGS  
ALEXANDER, ARK.  
NW 1/4 ALEXANDER 15' QUADRANGLE  
N 3437.5 W 9222.5/7.5  
1961

(SPRING LAKE)

2240