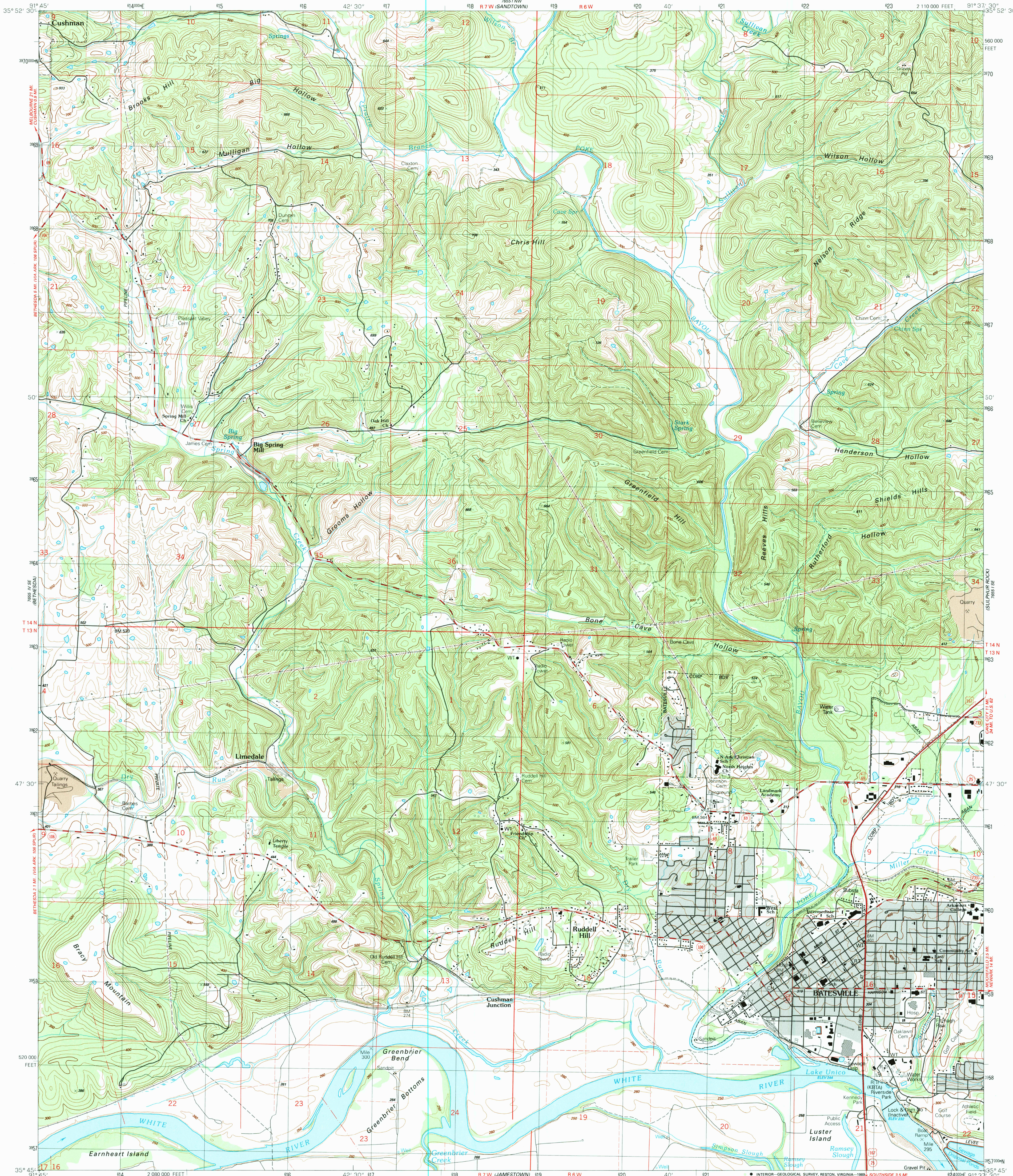


UNITED STATES  
DEPARTMENT OF THE INTERIOR  
GEOLOGICAL SURVEY

BATESVILLE QUADRANGLE  
ARKANSAS-INDEPENDENCE CO.  
7.5 MINUTE SERIES (TOPOGRAPHIC)



Produced by the United States Geological Survey

Control by USGS and NOS/NOAA

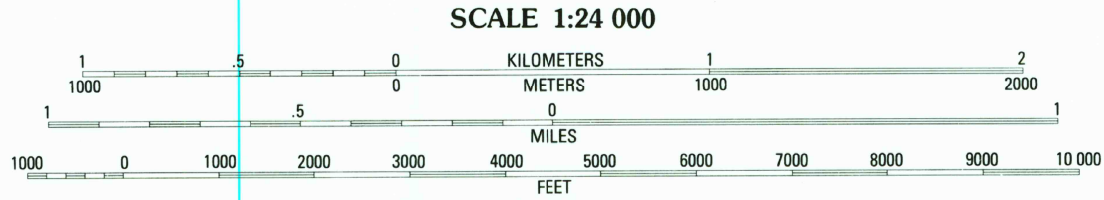
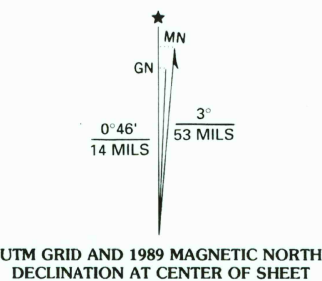
Topography by photogrammetric methods from aerial photographs  
taken 1986. Field checked 1987. Map edited 1989  
Supersedes Batesville map dated 1943

Projection and 10,000-foot grid ticks: Arkansas coordinate  
system, north zone (Lambert conformal conic)  
1000-meter Universal Transverse Mercator grid, zone 15  
1927 North American Datum

To place on the predicted North American Datum 1983,  
move the projection lines 5 meters south and  
13 meters east as shown by dashed corner ticks

Gray tint indicates areas in which only landmark buildings are shown

Fine red dashed lines indicate selected fence and field lines where  
generally visible on aerial photographs. This information is unchecked



CONTOUR INTERVAL 20 FEET  
SUPPLEMENTARY CONTOUR INTERVAL 10 FEET  
NATIONAL GEODETIC VERTICAL DATUM OF 1929

ROAD CLASSIFICATION	
Primary highway, hard surface	Light-duty road, hard or improved surface
Secondary highway, hard surface	Unimproved road
Interstate Route	U. S. Route
	State Route



BATESVILLE, ARK.

35091-G6-TF-024

1989

DMA 7655 1 SW-SERIES V884

THIS MAP COMPLIES WITH NATIONAL MAP ACCURACY STANDARDS  
FOR SALE BY U. S. GEOLOGICAL SURVEY, DENVER, COLORADO 80225, OR RESTON, VIRGINIA 22092  
AND ARKANSAS GEOLOGICAL COMMISSION, LITTLE ROCK, ARKANSAS 72204  
A FOLDER DESCRIBING TOPOGRAPHIC MAPS AND SYMBOLS IS AVAILABLE ON REQUEST