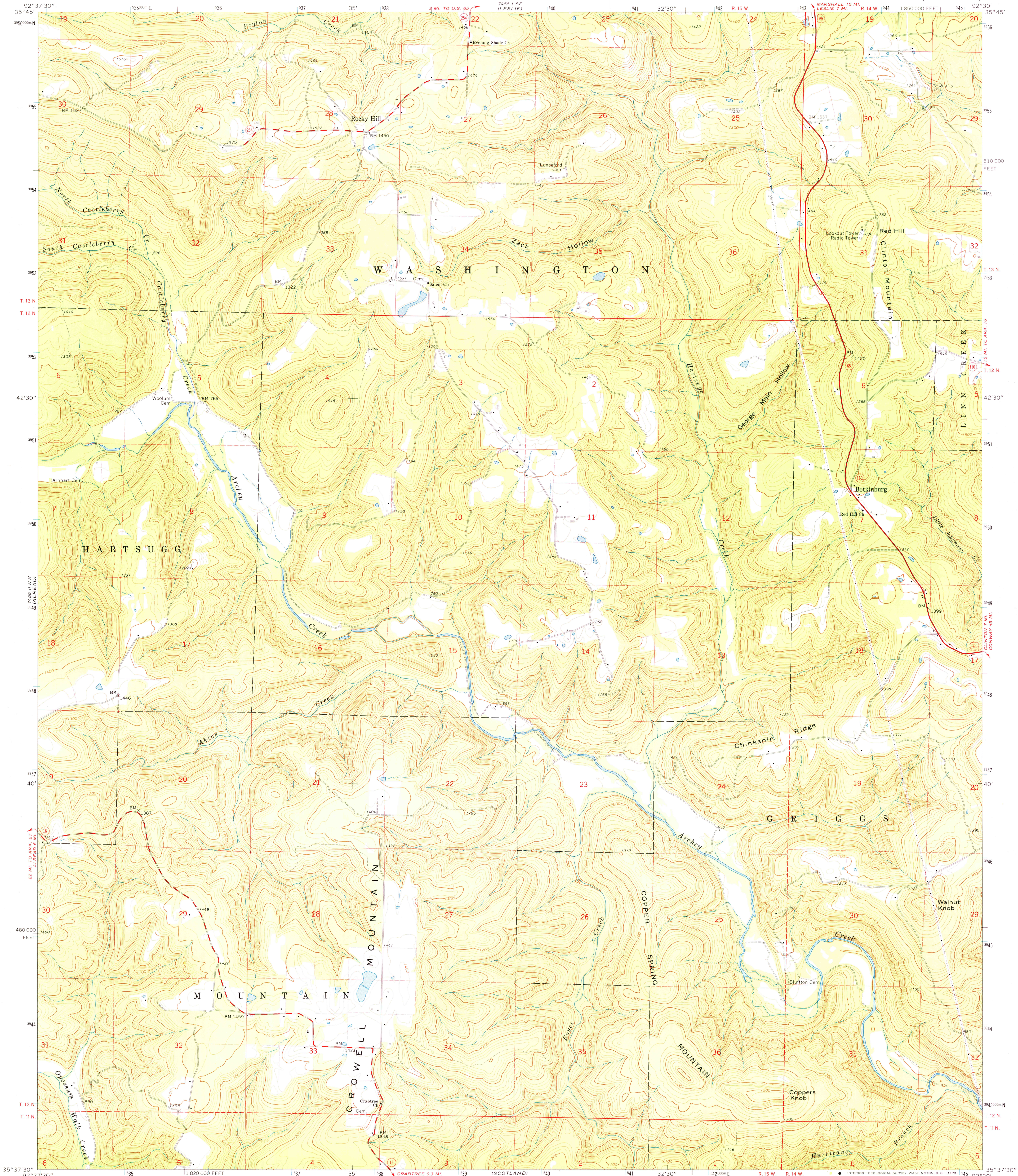


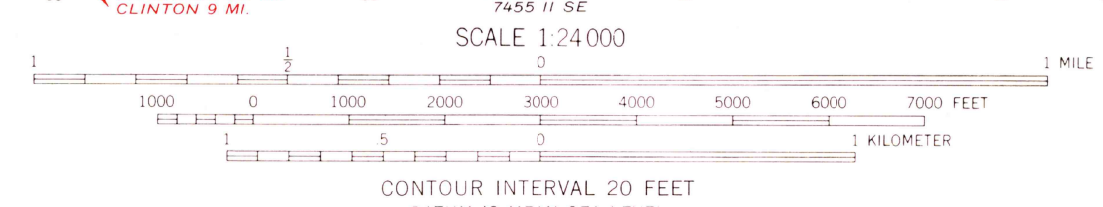
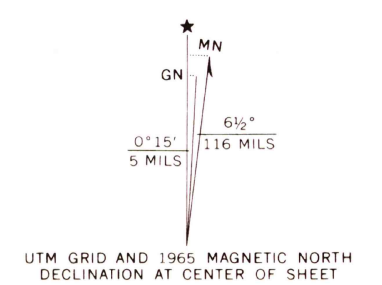
2400 18 W

UNITED STATES
DEPARTMENT OF THE INTERIOR
GEOLOGICAL SURVEY

BOTKINBURG QUADRANGLE
ARKANSAS-VAN BUREN CO.
7.5 MINUTE SERIES (TOPOGRAPHIC)



Mapped, edited, and published by the Geological Survey
Control by USGS and USC&GS
Topography by photogrammetric methods from aerial
photographs taken 1960. Field checked 1965
Polyconic projection. 1927 North American datum
10,000-foot grid based on Arkansas coordinate system, north zone
1000 meter Universal Transverse Mercator grid ticks,
zone 15, shown in blue
Fine red dashed lines indicate selected fence and field lines where
generally visible on aerial photographs. This information is unchecked



THIS MAP COMPLIES WITH NATIONAL MAP ACCURACY STANDARDS
FOR SALE BY U. S. GEOLOGICAL SURVEY, DENVER, COLORADO 80225 OR WASHINGTON, D. C. 20242,
AND BY THE ARKANSAS GEOLOGICAL COMMISSION, LITTLE ROCK, ARKANSAS 72201.
A FOLDER DESCRIBING TOPOGRAPHIC MAPS AND SYMBOLS IS AVAILABLE ON REQUEST



ROAD CLASSIFICATION

Heavy duty	Light duty
Medium duty	Unimproved dirt
U. S. Route	State Route

NOV 13 1973
USGS Historical File Topographic Division
BOTKINBURG, ARK.
N3537.5-W9230.7.5
1965
AMS 7455 II NE-SERIES V884