

Produced by the United States Geological Survey
Control by USGS and NOS/NOAA

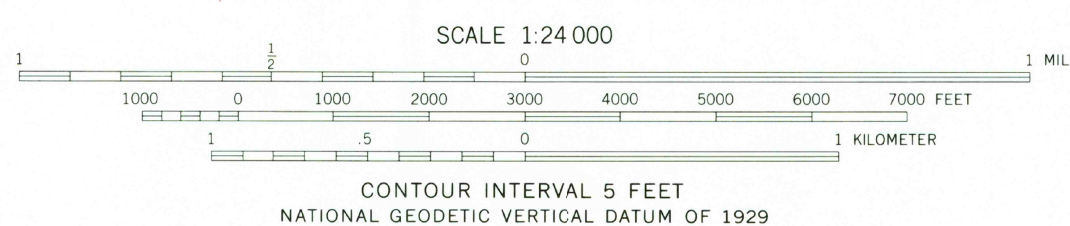
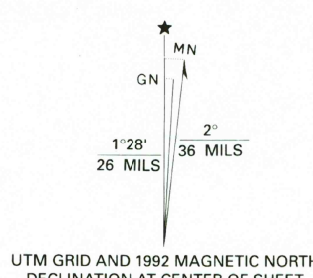
Topography by photogrammetric methods from aerial photographs
taken 1975-76. Field checked 1977. Map edited 1981

Projection and 10,000-foot grid ticks: Arkansas coordinate
system, north zone (Lambert conformal conic)
1000-meter Universal Transverse Mercator grid, zone 15
1927 North American Datum (NAD 27)

North American Datum of 1983 (NAD 83) is shown by dashed corner ticks
The values of the shift between NAD 27 and NAD 83 for 7.5-minute
intersections are given in USGS Bulletin 1875

Fine red dashed lines indicate selected fence and field lines where
generally visible on aerial photographs. This information is unchecked

Photosinspected from 1990 source; no major culture or drainage
changes observed. Boundaries and names verified 1992

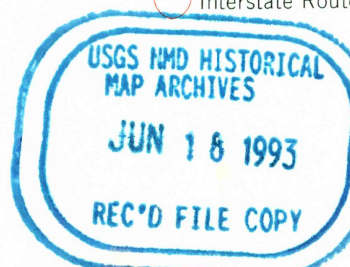


ROAD CLASSIFICATION

Primary highway, hard surface	Light-duty road, hard or improved surface
Secondary highway, hard surface	Unimproved road
Interstate Route	U. S. Route
	State Route

1	2	3	1 Giesack
			2 Joannette
4		5	3 Crawfordville
			4 Round Pond
			5 Edmondson
			6 Mud Lake
6	7	8	7 Hughes
			8 Horseshoe Lake

ADJOINING 7.5' QUADRANGLE NAMES



CHATFIELD, ARK.
SW/4 EDMONDSON 15' QUADRANGLE
35090A4-TF-024
1981
MINOR REVISION 1992

THIS MAP COMPLIES WITH NATIONAL MAP ACCURACY STANDARDS
FOR SALE BY U. S. GEOLOGICAL SURVEY, DENVER, COLORADO 80225, OR RESTON, VIRGINIA 22092
AND ARKANSAS GEOLOGICAL COMMISSION, LITTLE ROCK, ARKANSAS 72204
A FOLDER DESCRIBING TOPOGRAPHIC MAPS AND SYMBOLS IS AVAILABLE ON REQUEST