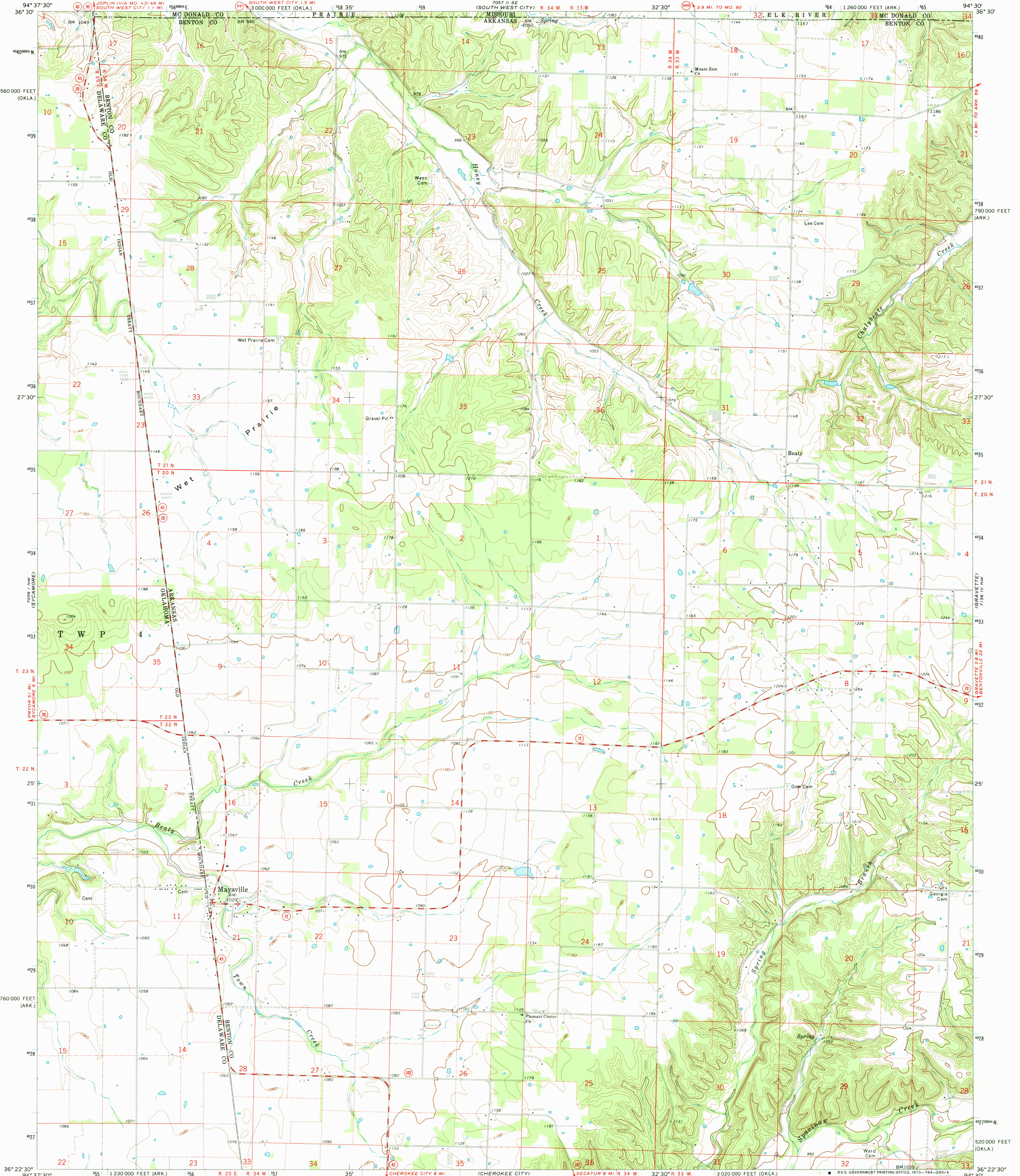
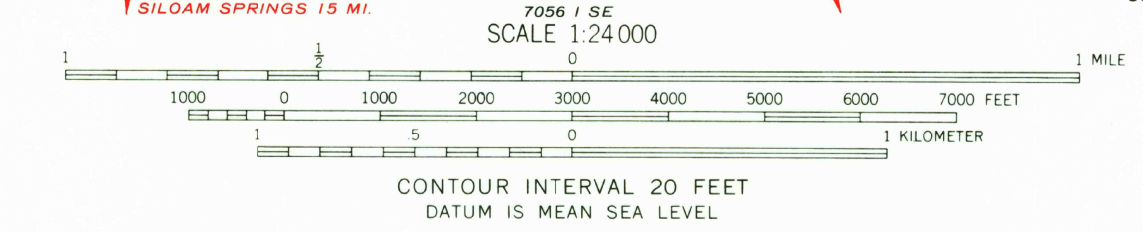
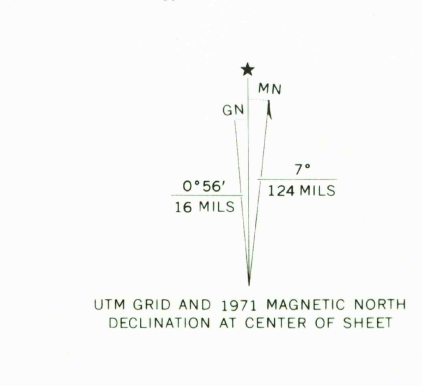


UNITED STATES
DEPARTMENT OF THE INTERIOR
GEOLOGICAL SURVEY

COLCORD NE QUADRANGLE
ARKANSAS—OKLAHOMA—MISSOURI
7.5 MINUTE SERIES (TOPOGRAPHIC)



Mapped, edited, and published by the Geological Survey
Control by USGS and USC&GS
Topography by photogrammetric methods from aerial photographs taken 1970. Field checked 1971
Polyconic projection. 1927 North American datum
10,000-foot grids based on Arkansas coordinate system, north zone and Oklahoma coordinate system, north zone
1000-meter Universal Transverse Mercator grid ticks, zone 15, shown in blue
Fine red dashed lines indicate selected fence and field lines where generally visible on aerial photographs. This information is unchecked



THIS MAP COMPLIES WITH NATIONAL MAP ACCURACY STANDARDS
FOR SALE BY U.S. GEOLOGICAL SURVEY, DENVER, COLORADO 80225 OR WASHINGTON, D.C. 20242.
THE ARKANSAS GEOLOGICAL COMMISSION, LITTLE ROCK, ARKANSAS 72201.
THE OKLAHOMA GEOLOGICAL SURVEY, NORMAN, OKLAHOMA 73069.
AND BY THE MISSOURI GEOLOGICAL SURVEY, ROLLA, MISSOURI 65401
A FOLDER DESCRIBING TOPOGRAPHIC MAPS AND SYMBOLS IS AVAILABLE ON REQUEST

ROAD CLASSIFICATION
Primary highway, hard surface
Secondary highway, hard surface
Unimproved road
Light-duty road, hard or improved surface
Interstate Route
U.S. Route
State Route

AMS 7056 1 NE—SERIES V884
1971
COLCORD NE, ARK.—OKLA.—MO.
N3622.5—W9430.7.5

1:50,000
NOEL 1:62,500

1:50,000
NOEL 1:62,500