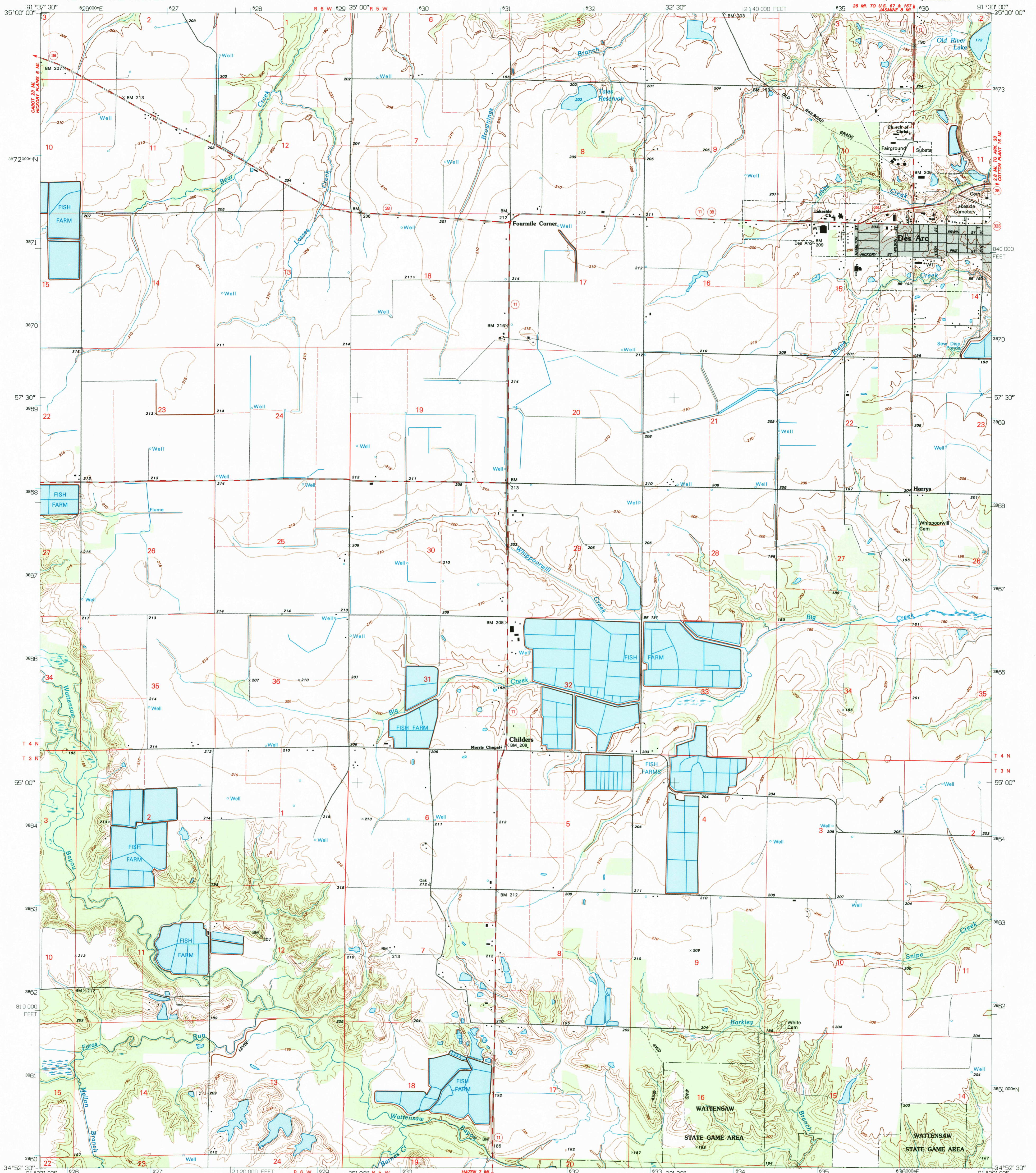
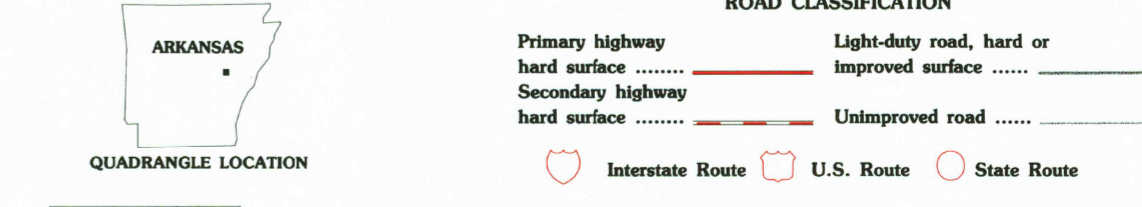
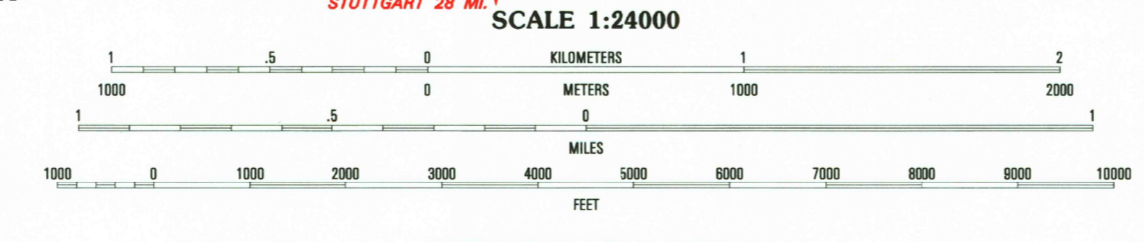
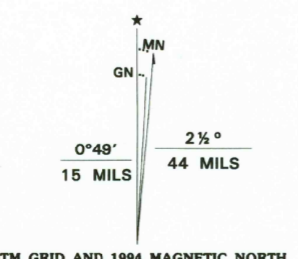


UNITED STATES
DEPARTMENT OF THE INTERIOR
GEOLOGICAL SURVEY

DES ARC WEST QUADRANGLE
ARKANSAS-PAIRIE CO.
7.5 MINUTE SERIES (TOPOGRAPHIC)

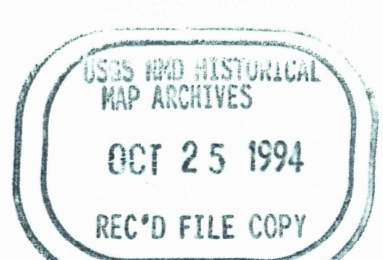


Produced by the United States Geological Survey
Control by USGS and NOS/NOAA
Topography by photogrammetric methods from aerial photographs taken 1963. Field checked 1964. Revised from aerial photographs taken 1990-91. Field checked 1993. Map edited 1994
Universal Transverse Mercator projection
10,000-foot grid ticks: Arkansas coordinate system, south zone 1000-meter Universal Transverse Mercator grid ticks, zone 15, shown in blue 1927 North American Datum (NAD 27)
North American Datum of 1983 (NAD 83) is shown by dashed corner ticks
The values of the shift between NAD 27 and NAD 83 for 7.5-minute intersections are given in USGS Bulletin 1875
There may be private inholdings within the boundaries of the National or State reservations shown on this map
Gray tint indicates area in which only landmark buildings are shown
Fine red dashed lines indicate selected fence and field lines where generally visible on aerial photographs. This information is unchecked



QUADRANGLE LOCATION

1	2	3	Walker
4	5	6	Jennine
7	8	9	Gregory SW
			Hickory Plains
			Des Arc East
			Carlisle
			Hazen
			De Valls Bluff



DES ARC WEST, ARK.
NE/4 HAZEN 15' QUADRANGLE
34091-H5-TF-024
1994
DMA 7653 1 NE - SERIES V884

THIS MAP COMPLIES WITH NATIONAL MAP ACCURACY STANDARDS
FOR SALE BY U.S. GEOLOGICAL SURVEY DENVER, COLORADO 80225, OR RESTON, VIRGINIA 22092
AND ARKANSAS GEOLOGICAL COMMISSION, LITTLE ROCK, ARKANSAS 72204
A FOLDER DESCRIBING TOPOGRAPHIC MAPS AND SYMBOLS IS AVAILABLE ON REQUEST