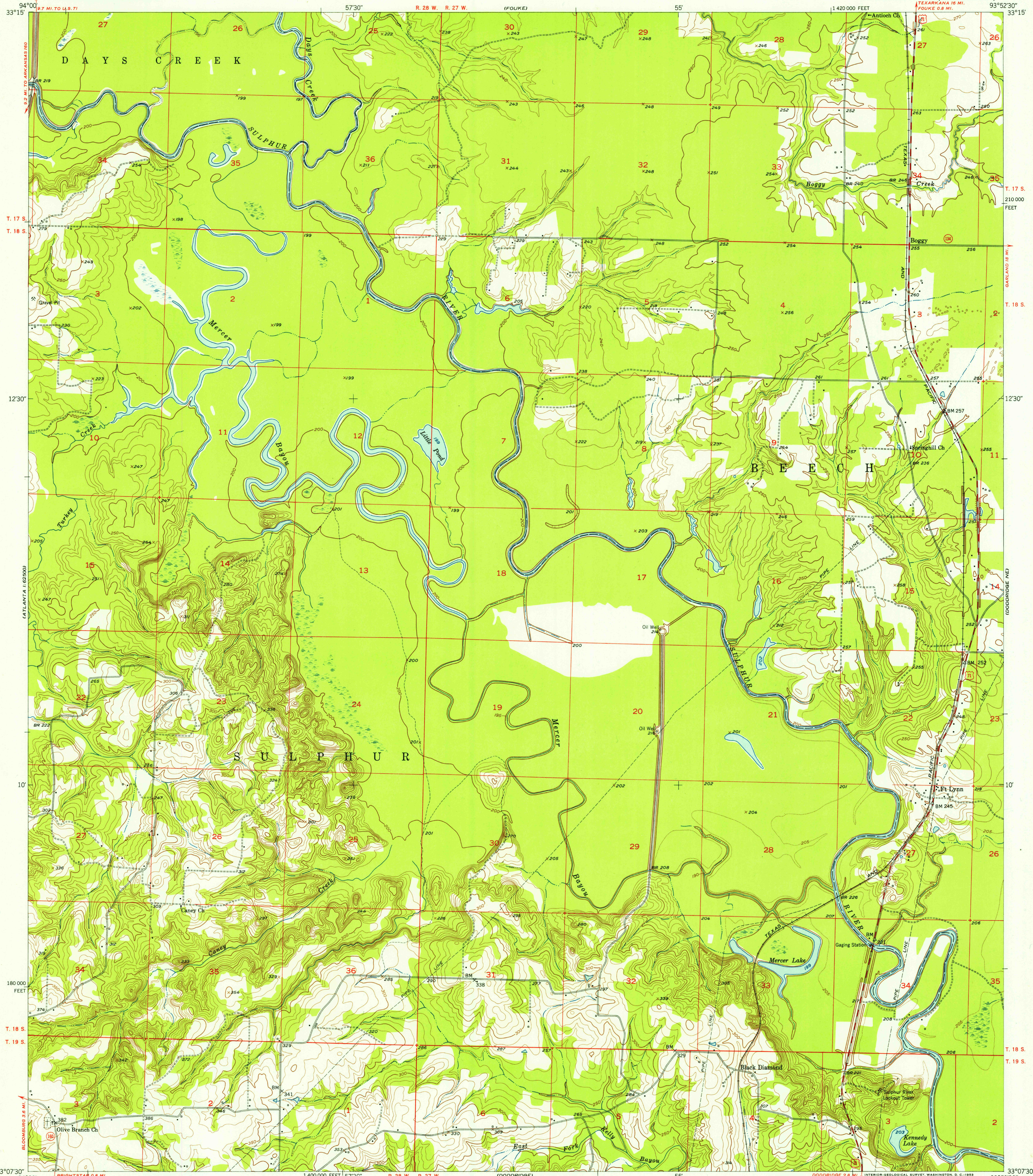


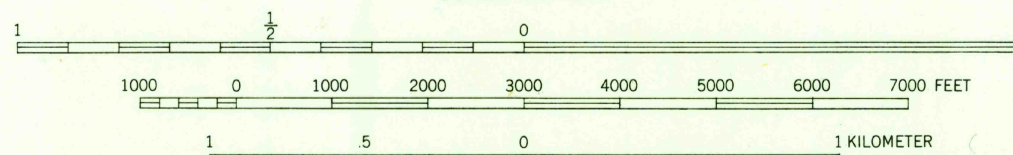
UNITED STATES  
DEPARTMENT OF THE INTERIOR  
GEOLOGICAL SURVEY

DODDRIDGE NW QUADRANGLE  
ARKANSAS-MILLER CO.  
7.5 MINUTE SERIES (TOPOGRAPHIC)



Maped, edited, and published by the Geological Survey  
Control by USGS, USC&GS, and USCE  
Culture and drainage in part compiled from aerial photographs  
taken 1948. Topography by plane-table surveys 1951-1952  
Polyconic projection. 1927 North American datum  
10,000-foot grid based on Arkansas coordinate system,  
south zone

TRUE NORTH  
MAGNETIC NORTH  
APPROXIMATE MEAN  
DECLINATION, 1952



CONTOUR INTERVAL 10 FEET  
DOTTED LINES REPRESENT HALF-INTERVAL CONTOURS  
DATUM IS MEAN SEA LEVEL

THIS MAP COMPLIES WITH NATIONAL MAP ACCURACY STANDARDS  
FOR SALE BY U. S. GEOLOGICAL SURVEY, FEDERAL CENTER, DENVER, COLORADO OR WASHINGTON 25, D. C.  
AND BY THE ARKANSAS RESOURCES AND DEVELOPMENT COMMISSION, LITTLE ROCK, ARKANSAS  
A FOLDER DESCRIBING TOPOGRAPHIC MAPS AND SYMBOLS IS AVAILABLE ON REQUEST

USGS  
Historical File  
Topographic Division



ROAD CLASSIFICATION  
Heavy-duty ——— 4 LANE 16 LANE Light-duty ———  
Medium-duty ——— 4 LANE 16 LANE Unimproved dirt ———  
U. S. Route ——— State Route ———

U. S. G. S.  
FILE COPY  
Inspector and Editor

DODDRIDGE NW, ARK.  
N 3307.5—W 9352.5/7.5  
1952

SEP 11 1953