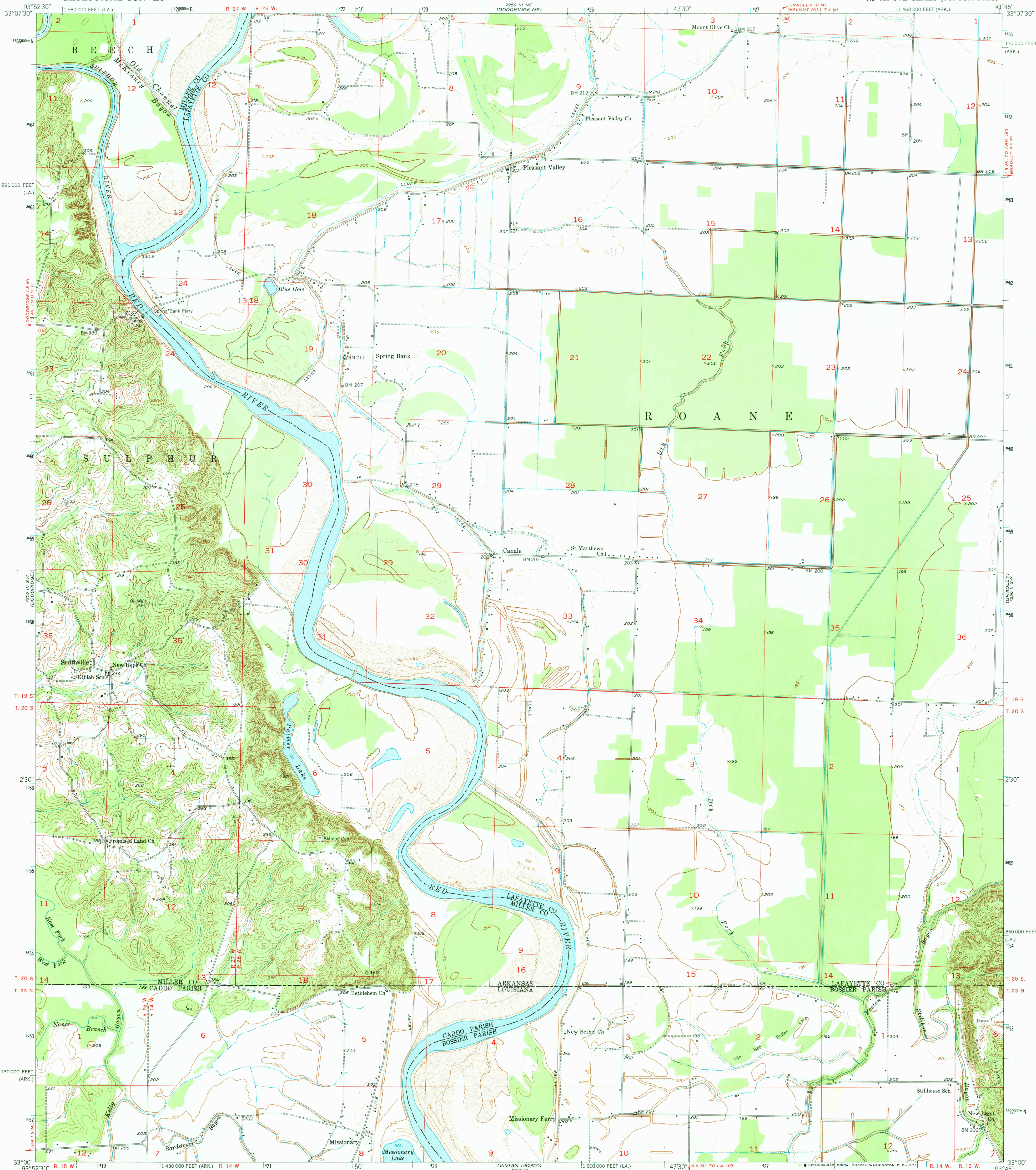
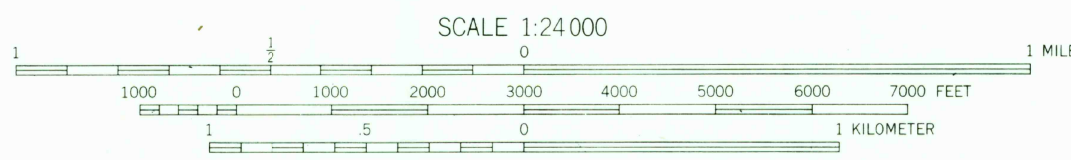
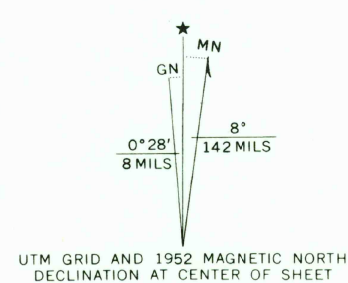


UNITED STATES
DEPARTMENT OF THE INTERIOR
GEOLOGICAL SURVEY

DODDRIDGE SE QUADRANGLE
ARKANSAS-LOUISIANA
7.5 MINUTE SERIES (TOPOGRAPHIC)



Mapped, edited, and published by the Geological Survey
Control by USGS, USC&GS, and USCE
Culture and drainage in part compiled from aerial photographs
taken 1948. Topography by plane-table surveys 1951-1952
Polyconic projection. 1927 North American datum
10,000-foot grids based on Arkansas coordinate system,
south zone, and Louisiana coordinate system, north zone
1000-meter Universal Transverse Mercator grid ticks,
zone 15, shown in blue



CONTOUR INTERVAL 10 FEET
DOTTED LINES REPRESENT HALF-INTERVAL CONTOURS
DATUM IS MEAN SEA LEVEL

THIS MAP COMPLIES WITH NATIONAL MAP ACCURACY STANDARDS
FOR SALE BY U. S. GEOLOGICAL SURVEY, DENVER, COLORADO 80225 OR WASHINGTON, D. C. 20242.
THE ARKANSAS GEOLOGICAL AND CONSERVATION COMMISSION, LITTLE ROCK, ARKANSAS 72201,
AND BY THE STATE OF LOUISIANA, DEPARTMENT OF PUBLIC WORKS, BATON ROUGE, LOUISIANA 70804
A FOLDER DESCRIBING TOPOGRAPHIC MAPS AND SYMBOLS IS AVAILABLE ON REQUEST



ROAD CLASSIFICATION
Heavy-duty 4 LANE 16 LANE Light-duty
Medium-duty 4 LANE 16 LANE Unimproved dirt
U. S. Route State Route

USGS
HISTORICAL FILE
TOPOGRAPHIC DIVISION

DODDRIDGE SE, ARK.-LA.
N3300-W9345/7.5

1952

AMS 7250 III SE-SERIES V884

MAR 5 1973

1630