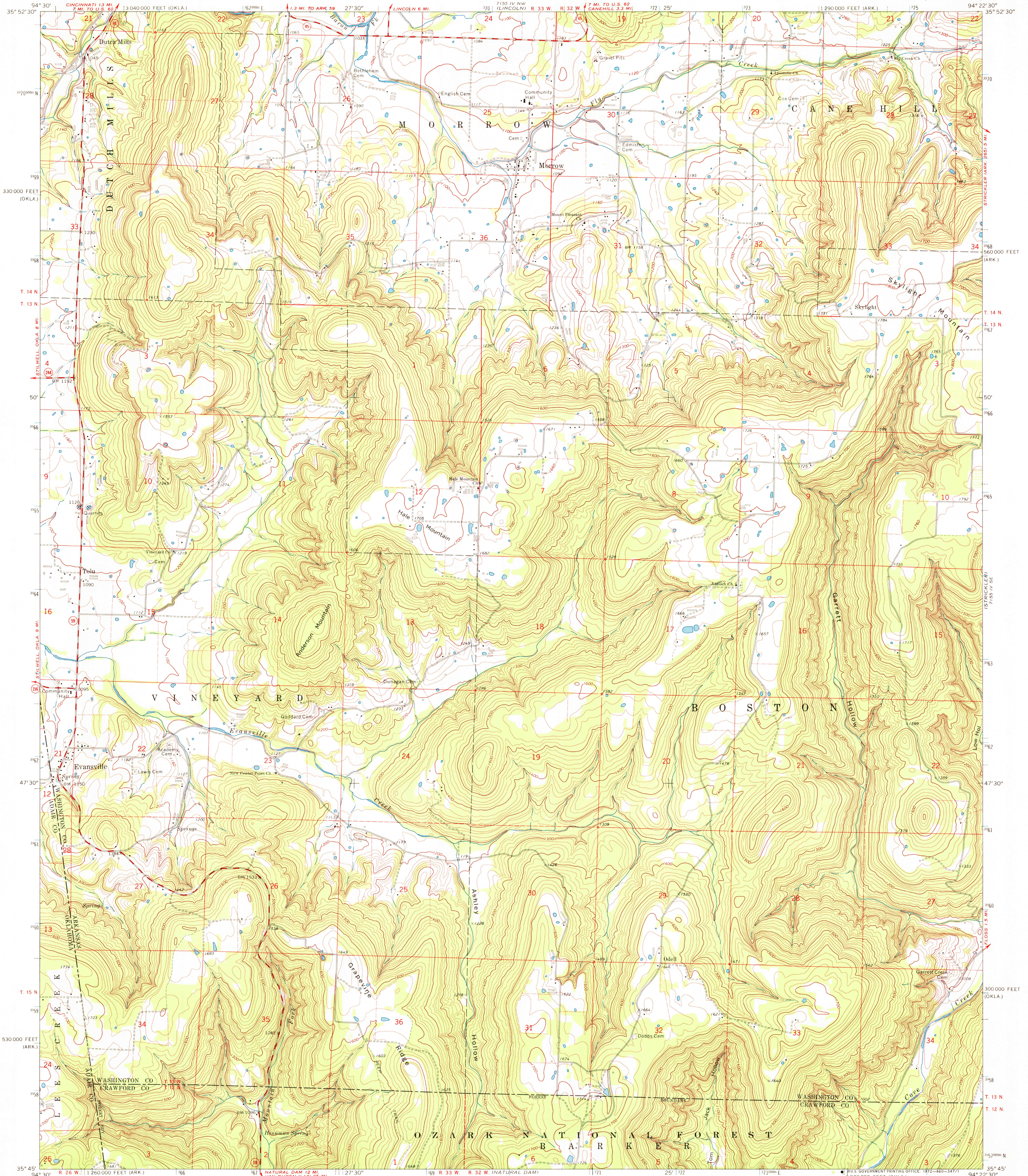
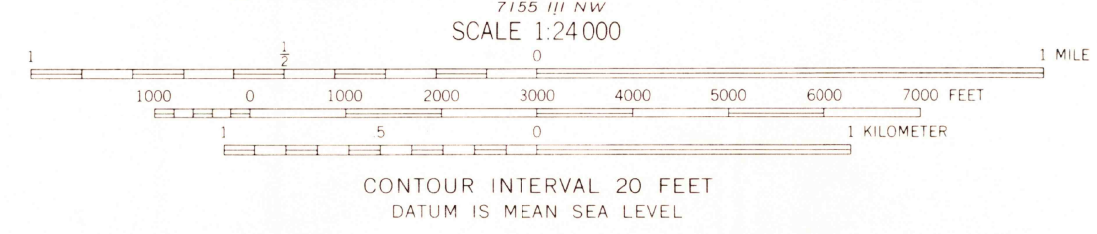
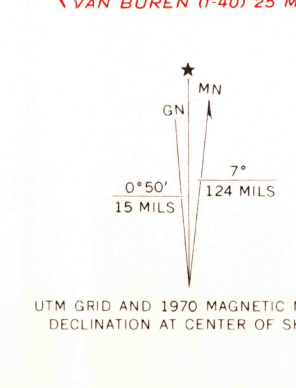


7155 IV NE
(PRAIRIE PROVE)



Mapped, edited, and published by the Geological Survey
Control by USGS and USC&GS
Topography by photogrammetric methods from aerial photographs taken 1968. Field checked 1970
Polyconic projection. 1927 North American datum, 10,000-foot grid based on Arkansas coordinate system, north zone and Oklahoma coordinate system, north zone
1000-meter Universal Transverse Mercator grid ticks, zone 15, shown in blue
Fine red dashed lines indicate selected fence and field lines where generally visible on aerial photographs. This information is unchecked



ROAD CLASSIFICATION
Secondary highway, all weather, Light-duty road, all weather, improved surface
hard surface
Unimproved road, fair or dry weather
State Route

JUL 3 1972
Denver 2500

THIS MAP COMPLIES WITH NATIONAL MAP ACCURACY STANDARDS
FOR SALE BY U. S. GEOLOGICAL SURVEY, DENVER, COLORADO 80225 OR WASHINGTON, D. C. 20242.
ARKANSAS GEOLOGICAL COMMISSION, LITTLE ROCK, ARKANSAS 72201.
AND OKLAHOMA GEOLOGICAL SURVEY, NORMAN, OKLAHOMA 73069
A FOLDER DESCRIBING TOPOGRAPHIC MAPS AND SYMBOLS IS AVAILABLE ON REQUEST

EVANSVILLE, ARK.-OKLA.
N3545-W9422.5/7.5