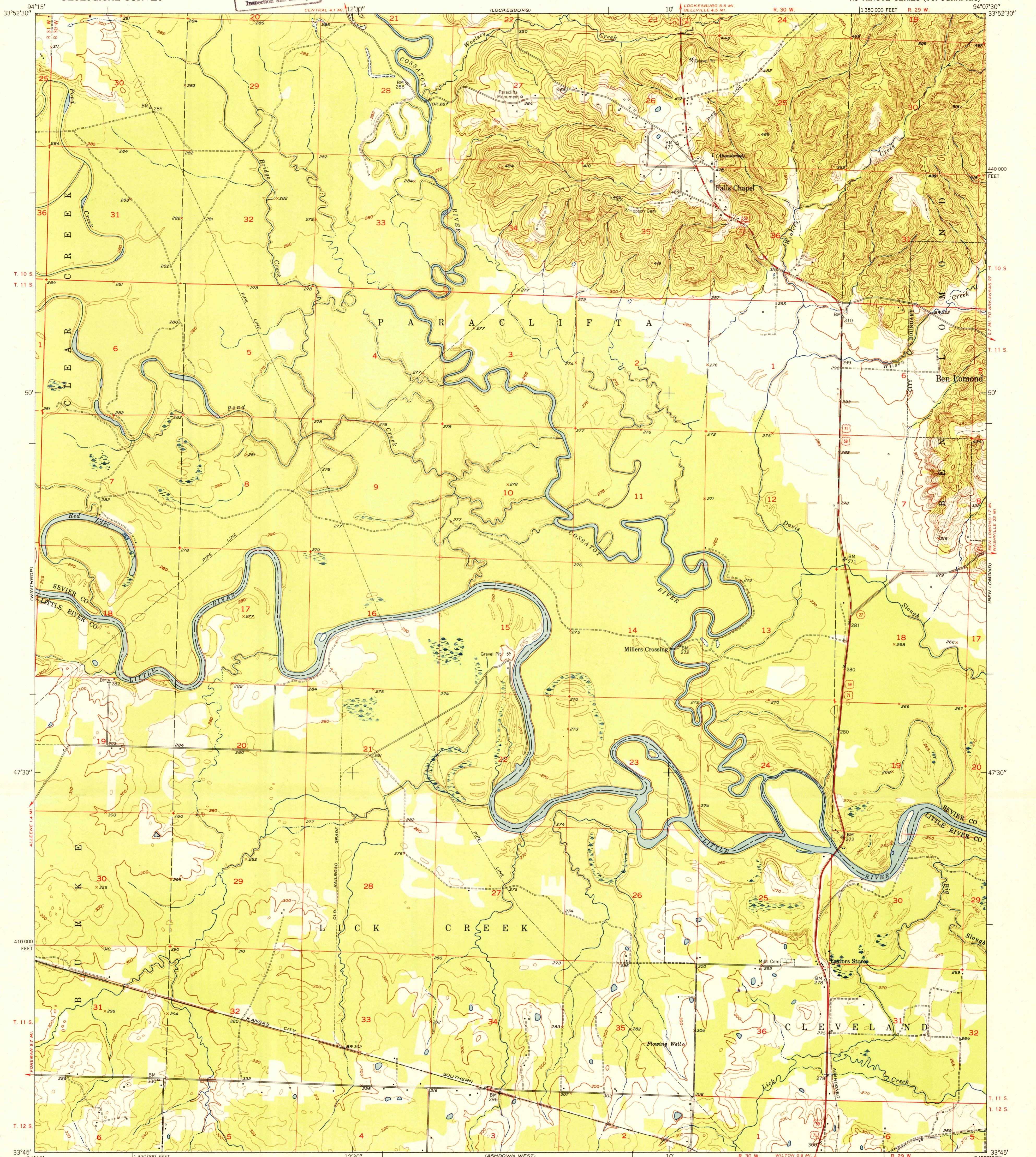
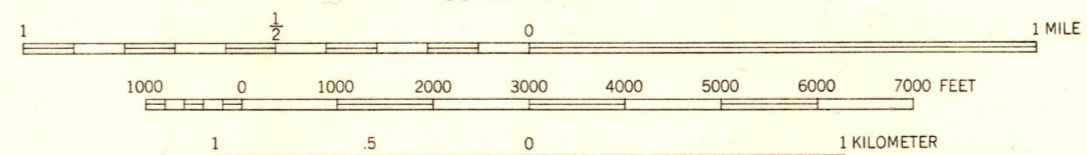


U.S.G.S.
FILE COPY
Inspection and Editing



Mapped, edited, and published by the Geological Survey
Control by USGS and USC&GS
Culture and drainage in part compiled from
aerial photographs taken 1949
Topography by plane-table methods 1950
Polyconic projection. 1927 North American datum
10,000-foot grid based on Arkansas coordinate system,
south zone

TRUE NORTH
MAGNETIC NORTH
APPROXIMATE MEAN
DECLINATION, 1950



CONTOUR INTERVAL 10 FEET
DOTTED LINES REPRESENT HALF-INTERVAL CONTOURS
DATUM IS MEAN SEA LEVEL

THIS MAP COMPLIES WITH NATIONAL MAP ACCURACY STANDARDS
FOR SALE BY U. S. GEOLOGICAL SURVEY, FEDERAL CENTER, DENVER, COLORADO OR WASHINGTON 25, D. C.
AND BY THE ARKANSAS RESOURCES AND DEVELOPMENT COMMISSION, LITTLE ROCK, ARKANSAS
A FOLDER DESCRIBING TOPOGRAPHIC MAPS AND SYMBOLS IS AVAILABLE ON REQUEST

USGS
Historical File
Topographic Division

ROAD CLASSIFICATION
Heavy-duty — 4 LANE 16 LANE Light-duty —
Medium-duty — 4 LANE 16 LANE Unimproved dirt —
U. S. Route State Route

U.S.G.S.
FILE COPY
Inspection and Editing

FALLS CHAPEL, ARK.
N3345-W9407.5/7.5

EDITION OF 1951

NOV 6 1951

2110