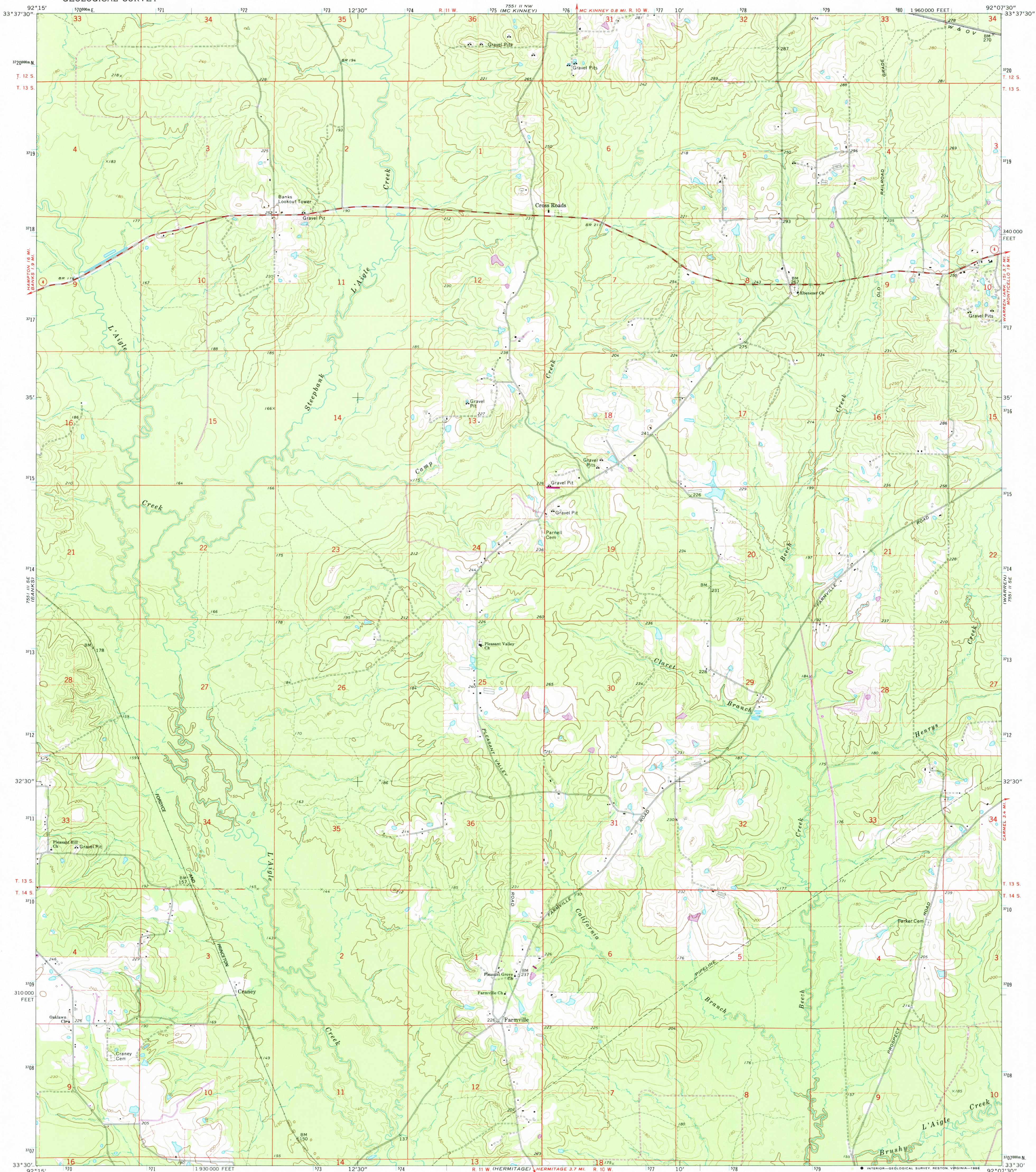


7551 II NE
(TINSMAN)

UNITED STATES
DEPARTMENT OF THE INTERIOR
GEOLOGICAL SURVEY

FARMVILLE QUADRANGLE
ARKANSAS—BRADLEY CO.
7.5 MINUTE SERIES (TOPOGRAPHIC)

7551 II NE
(WARREN)



Mapped, edited, and published by the Geological Survey

Control by USGS and USC&GS

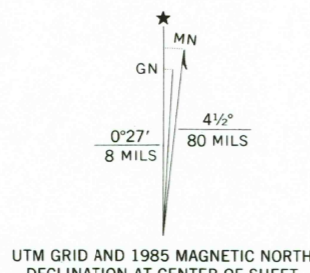
Topography by photogrammetric methods from aerial
photographs taken 1972. Field checked 1973

Projection and 10,000-foot grid ticks: Arkansas coordinate
system, south zone (Lambert conformal conic)
1000-meter Universal Transverse Mercator grid ticks,
zone 15, shown in blue. 1927 North American datum

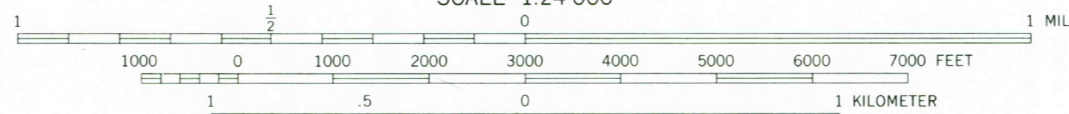
Fine red dashed lines indicate selected fence and field lines where
generally visible on aerial photographs. This information is unchecked

To place on the predicted North American Datum 1983,
move the projection lines 10 meters south and
14 meters east as shown by dashed corner ticks

Revisions shown in purple compiled from aerial photographs taken 1984 and
other sources. This information not field checked. Map edited 1985



UTM GRID AND 1985 MAGNETIC NORTH
DECLINATION AT CENTER OF SHEET



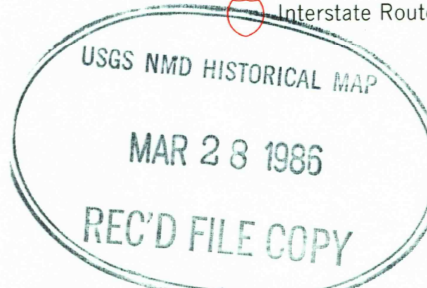
CONTOUR INTERVAL 10 FEET
NATIONAL GEODETIC VERTICAL DATUM OF 1929

THIS MAP COMPLIES WITH NATIONAL MAP ACCURACY STANDARDS
FOR SALE BY U.S. GEOLOGICAL SURVEY, DENVER, COLORADO 80225, OR RESTON, VIRGINIA 22092
AND ARKANSAS GEOLOGICAL COMMISSION, LITTLE ROCK, ARKANSAS 72204
A FOLDER DESCRIBING TOPOGRAPHIC MAPS AND SYMBOLS IS AVAILABLE ON REQUEST



QUADRANGLE LOCATION

ROAD CLASSIFICATION	
Primary highway, hard surface	Light-duty road, hard or improved surface
Secondary highway, hard surface	Unimproved road
Interstate Route	U.S. Route
	State Route



FARMVILLE, ARK

33092-E2-TF-024

1973
PHOTOREVISED 1985
DMA 7551 II SW-SERIES V884

7551 II NE
(WARREN)