



Control by USGS and USC&amp;GS

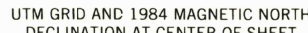
Topography by photogrammetric methods from aerial  
photographs taken 1960. Field checked 1963

Polyconic projection. 1927 North American datum  
 10,000-foot grid based on Arkansas coordinate system, south zone  
 1000-meter Universal Transverse Mercator grid ticks,  
 zone 15, shown in blue

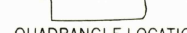
Fine red dashed lines indicate selected fence and field lines where generally visible on aerial photographs. This information is unchecked

To place on the predicted North American Datum 1983,  
move the projection lines 7 meters south and  
15 meters east as shown by dashed corner ticks

Revisions shown in purple compiled from aerial photographs taken 1982 and other sources. This information not field checked. Map edited 1984



CONTOUR INTERVAL 20 FEET  
NATIONAL GEODETIC VERTICAL DATUM OF 1929

 State Route 100

RESTON, VA 22092

PHOTOREVISED 1984

DMA 7453 II SE-SERIES V88