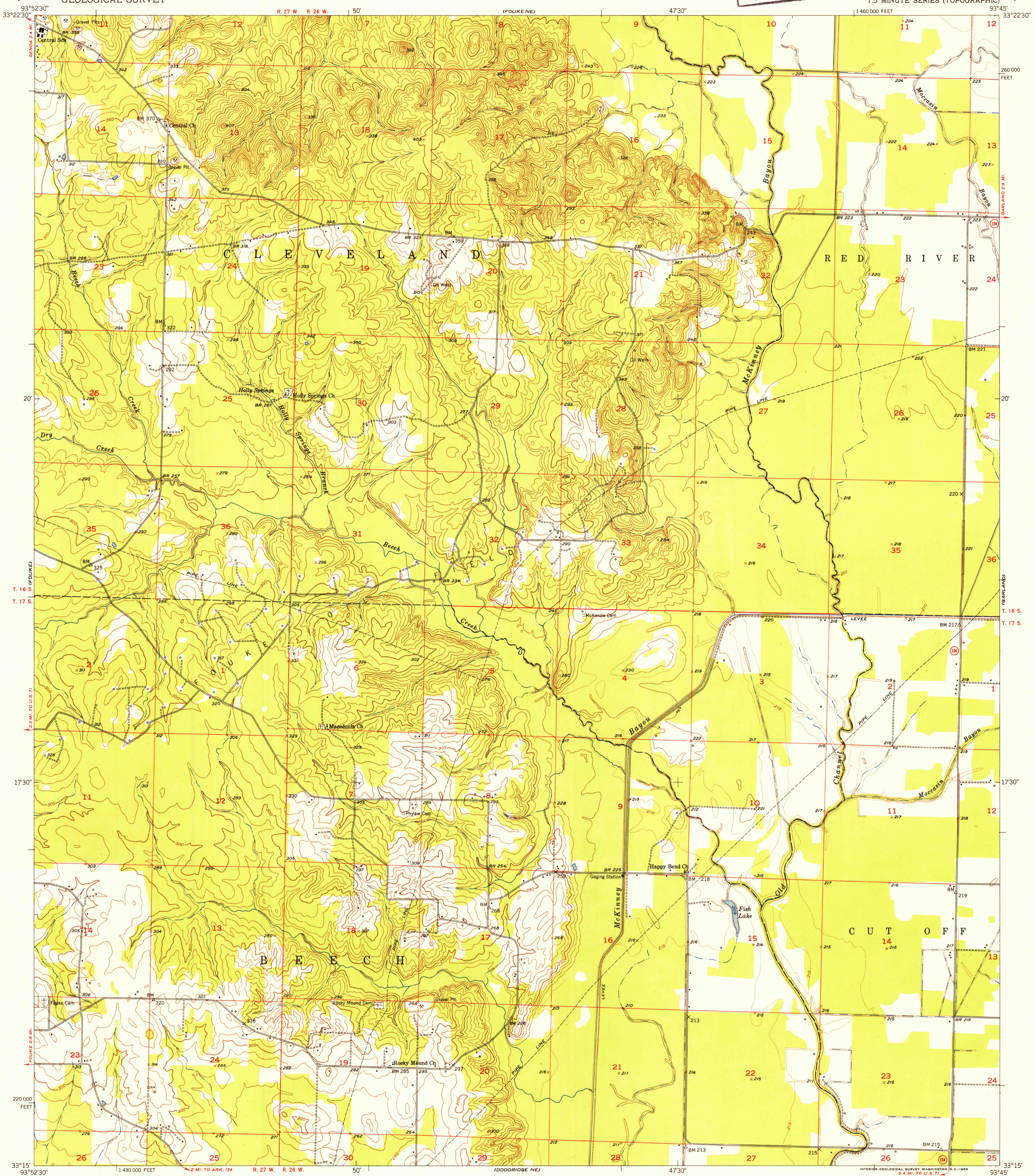
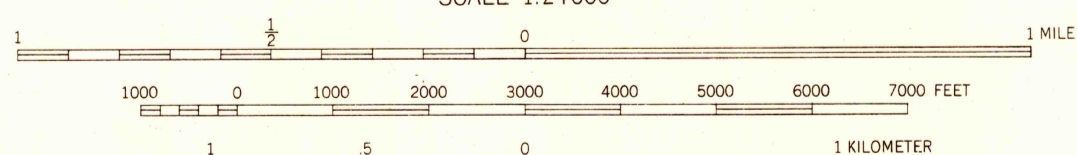
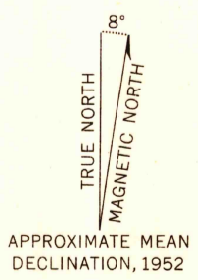


U.S.G.S.  
**FILE COPY**  
Inspection and Editing



Mapped, edited, and published by the Geological Survey  
Control by USGS and USC&GS  
Culture and drainage in part compiled from aerial photographs  
taken 1948. Topography by plane-table surveys 1951-1952  
Polyconic projection. 1927 North American datum  
10,000-foot grid based on Arkansas coordinate system,  
south zone



CONTOUR INTERVAL 10 FEET  
DOTTED LINES REPRESENT HALF-INTERVAL CONTOURS  
DATUM IS MEAN SEA LEVEL

THIS MAP COMPLIES WITH NATIONAL MAP ACCURACY STANDARDS  
FOR SALE BY U. S. GEOLOGICAL SURVEY, FEDERAL CENTER, DENVER, COLORADO OR WASHINGTON 25, D. C.  
AND BY THE ARKANSAS RESOURCES AND DEVELOPMENT COMMISSION, LITTLE ROCK, ARKANSAS  
A FOLDER DESCRIBING TOPOGRAPHIC MAPS AND SYMBOLS IS AVAILABLE ON REQUEST

USGS  
Historical File  
Topographic Division



ROAD CLASSIFICATION

Heavy-duty	4 LANE 16 LANE	Light-duty
Medium-duty	4 LANE 16 LANE	Unimproved dirt
U. S. Route		State Route

U.S.G.S.  
**FILE COPY**  
Inspection and Editing

FOUKE SE, ARK.  
N3315-W9345/7.5  
1952

NOV 20 1953