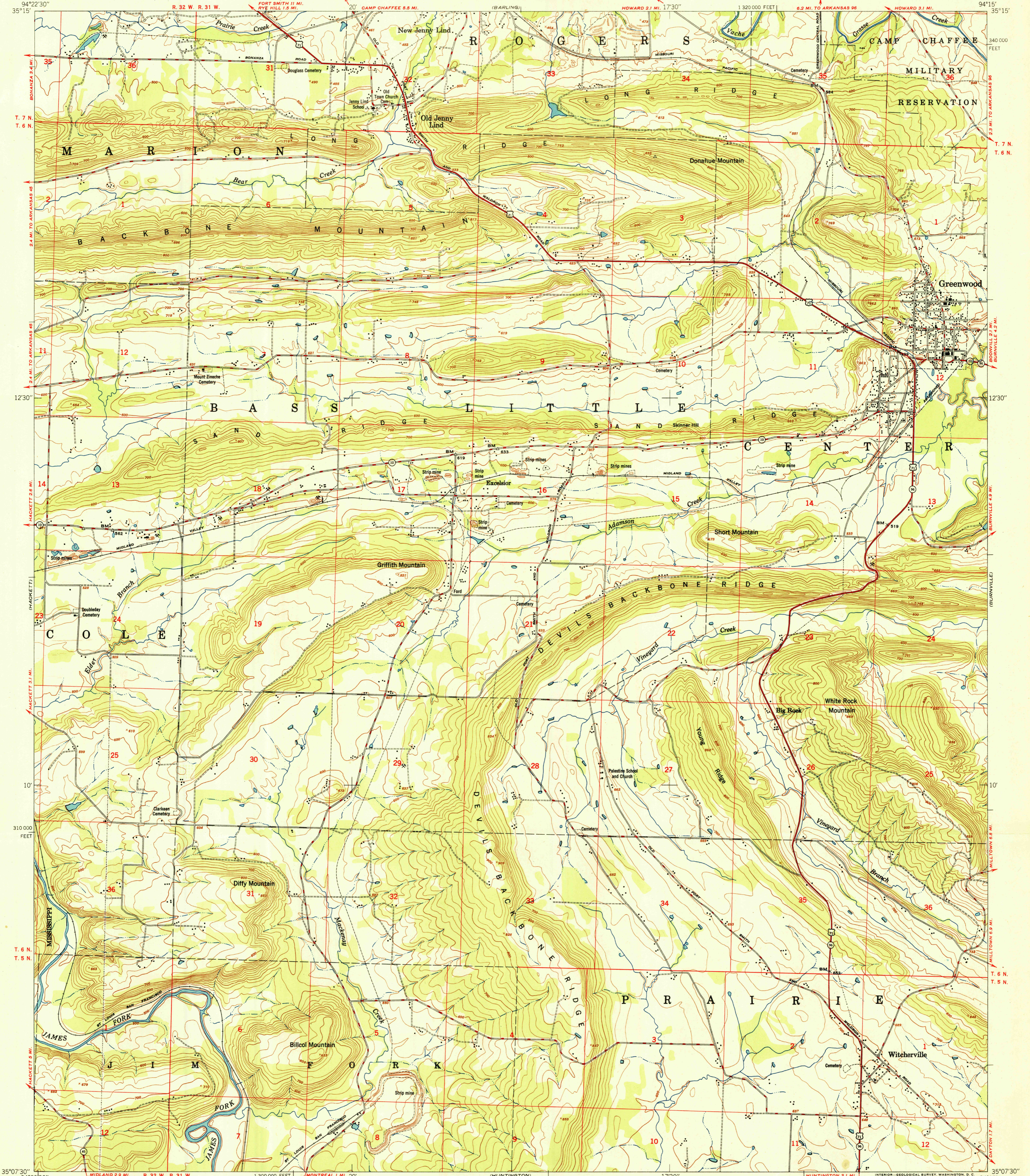
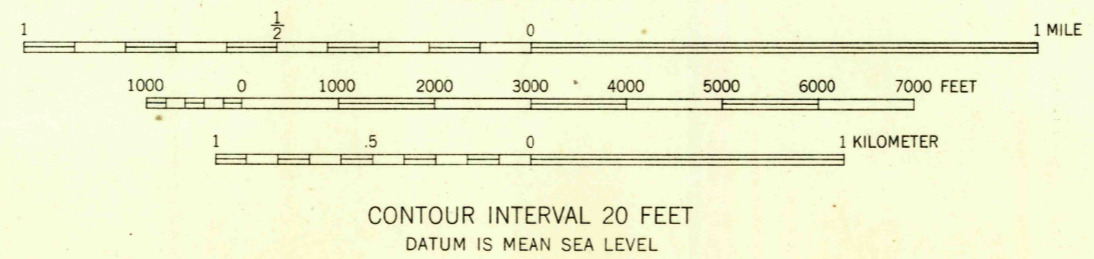
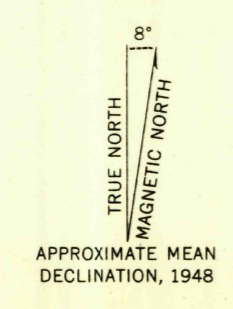


U.S.G.S.
FILE COPY
Inspection and Printing



Maped by the Army Map Service
Published for civil use by the Geological Survey
Control by CE, USGS, and USC&GS
Topography from aerial photographs by photogrammetric methods
Aerial photographs taken 1946. Field check 1948
Polyconic projection. 1927 North American datum
10,000-foot grid based on Arkansas coordinate system,
north zone
Unchecked elevations are shown in brown
No distinction is made between dwellings, barns,
commercial and industrial buildings



USGS
Historical File
Topographic Division

ROAD CLASSIFICATION

HARD-SURFACE ALL WEATHER ROADS	DRY WEATHER ROADS
Heavy-duty — 4 LANE 18 LANE	Improved dirt —
Medium-duty — 2 LANE 18 LANE	Unimproved dirt —
Loose-surface, graded, or narrow hard-surface —	
U. S. Route	State Route

THIS MAP COMPLIES WITH NATIONAL MAP ACCURACY STANDARDS
FOR SALE BY U. S. GEOLOGICAL SURVEY, FEDERAL CENTER, DENVER, COLORADO OR WASHINGTON 25, D. C.
AND BY THE ARKANSAS RESOURCES AND DEVELOPMENT COMMISSION, LITTLE ROCK, ARKANSAS
A FOLDER DESCRIBING TOPOGRAPHIC MAPS AND SYMBOLS IS AVAILABLE ON REQUEST

U.S.G.S.
FILE COPY
Inspection and Printing

GREENWOOD, ARK.
N3507.5-W9415.7.5
EDITION OF 1951