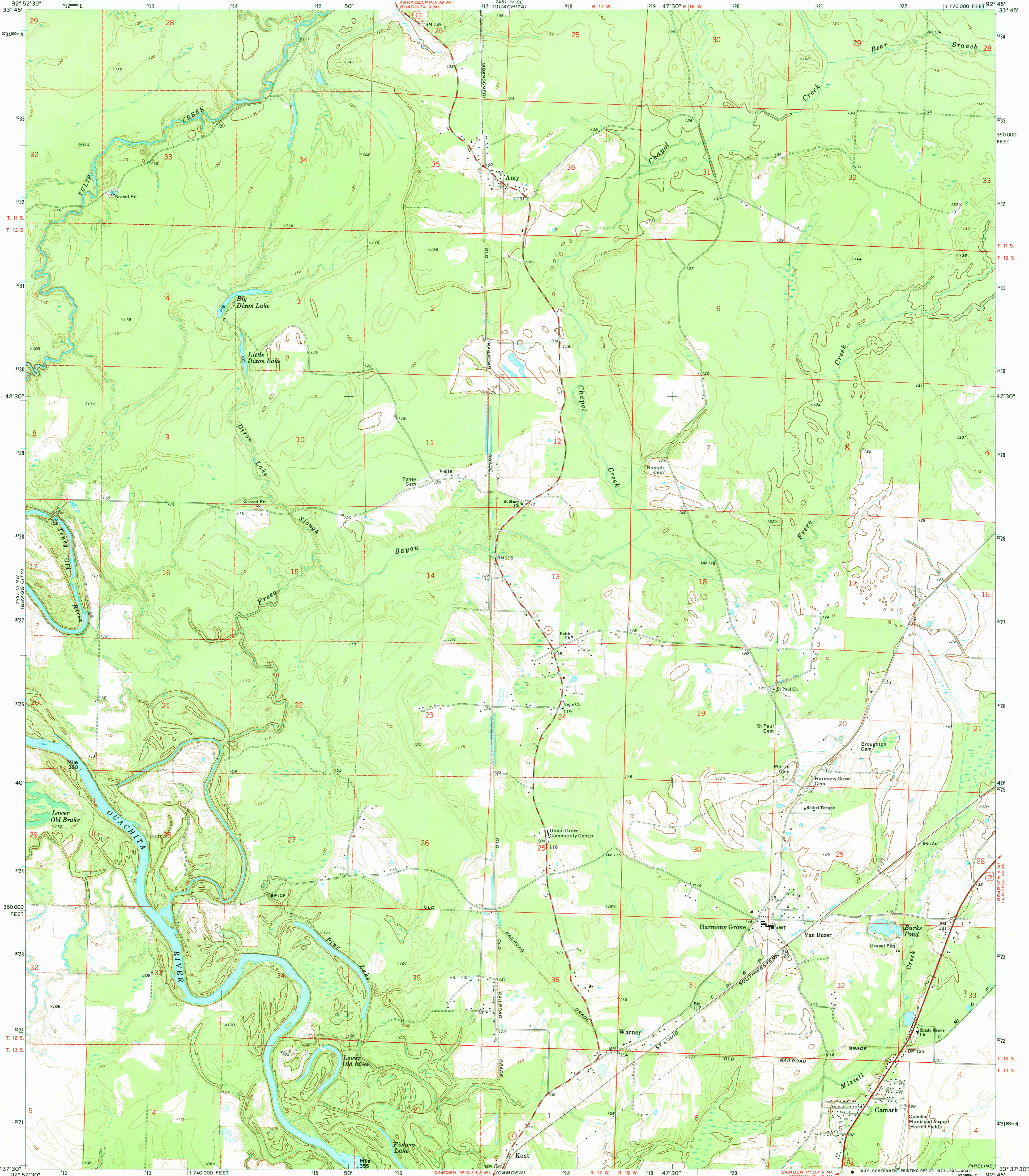


25' IN NW
STATES BLUFF

UNITED STATES
DEPARTMENT OF THE INTERIOR
GEOLOGICAL SURVEY

HARMONY GROVE QUADRANGLE
ARKANSAS—OUACHITA CO.
7.5 MINUTE SERIES (TOPOGRAPHIC)
NE/4 CAMDEN 15' QUADRANGLE



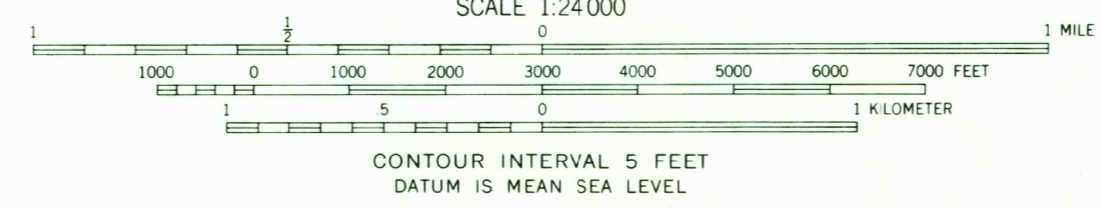
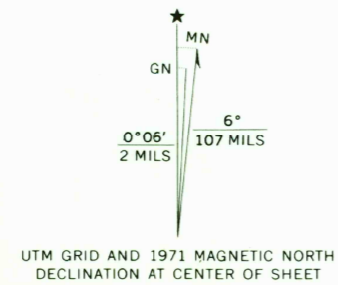
Mapped, edited, and published by the Geological Survey

Control by USGS and USC&GS

Topography by photogrammetric methods from aerial photographs taken 1970. Field checked 1971

Polyconic projection. 1927 North American datum 10,000-foot grid based on Arkansas coordinate system, south zone 1000-meter Universal Transverse Mercator grid ticks, zone 15, shown in blue

Fine red dashed lines indicate selected fence and field lines where generally visible on aerial photographs. This information is unchecked



CONTOUR INTERVAL 5 FEET
DATUM IS MEAN SEA LEVEL



ROAD CLASSIFICATION
Primary highway, hard surface
Secondary highway, hard surface
Unimproved road
Light-duty road, hard or improved surface

Interstate Route
U. S. Route
State Route

THIS MAP COMPLIES WITH NATIONAL MAP ACCURACY STANDARDS
FOR SALE BY U. S. GEOLOGICAL SURVEY, DENVER, COLORADO 80225, OR WASHINGTON, D. C. 20242
AND BY THE ARKANSAS GEOLOGICAL COMMISSION, LITTLE ROCK, ARKANSAS 72201
A FOLDER DESCRIBING TOPOGRAPHIC MAPS AND SYMBOLS IS AVAILABLE ON REQUEST

HARMONY GROVE, ARK.
NE/4 CAMDEN 15' QUADRANGLE
N3337.5—W9245.7.5

1971

AMS 7451 III NE—SERIES V884

Hoan
2500
DEC 8 1973
P. H. M. '50