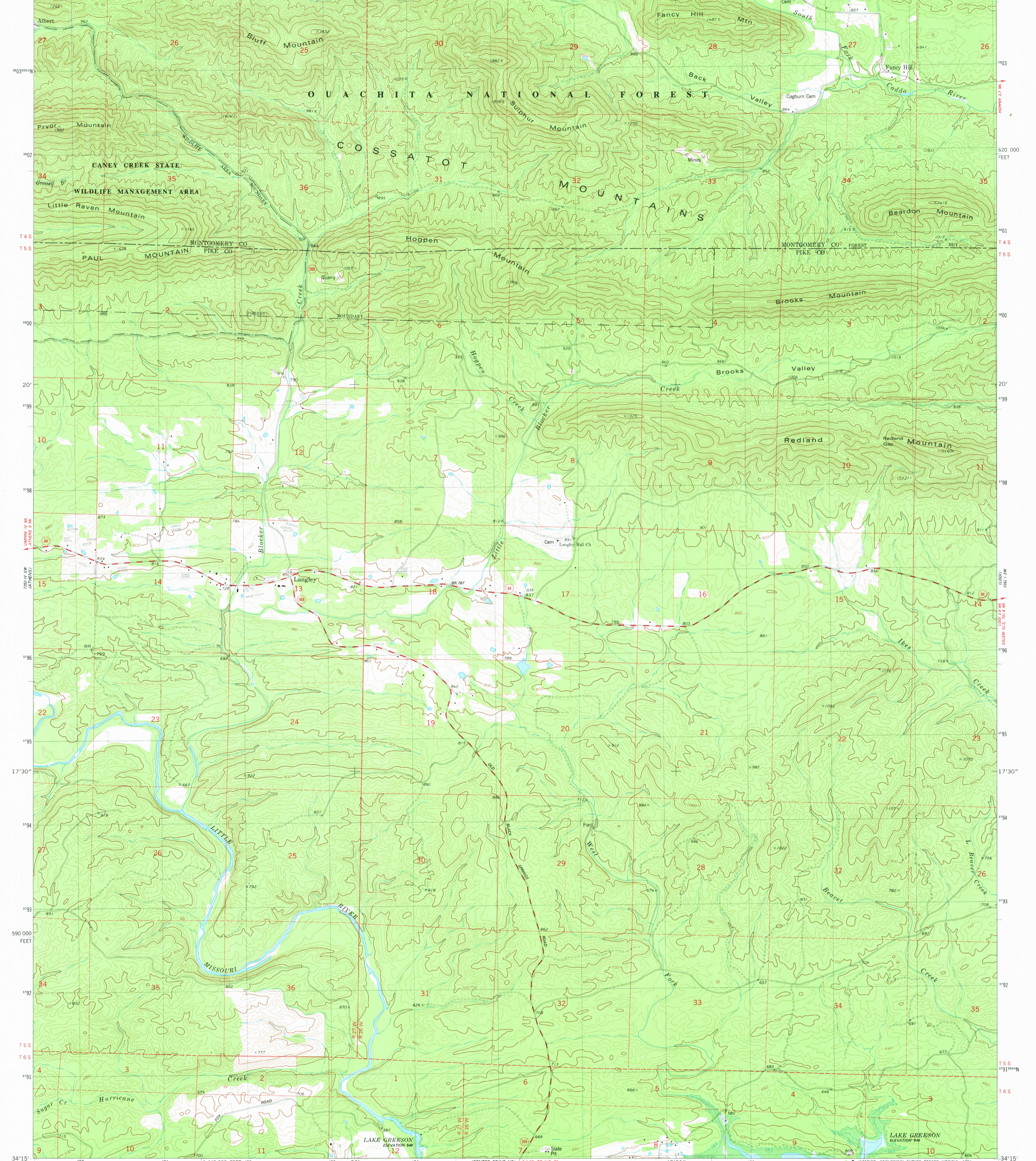


93°52'30" 20°00"E 21 22 23 R 27 W 50' R 26 W 25 26 27 47'30" 28 29 30 31 32 33 34 35 36 37 38 39 40 41 42 43 44 45 1:470 000 FEET 93°45' 34°22'30"



Mapped, edited, and published by the Geological Survey

Control by USGS and NOS/NOAA

Topography by photogrammetric methods from aerial photographs taken 1976. Field checked 1978. Map edited 1980

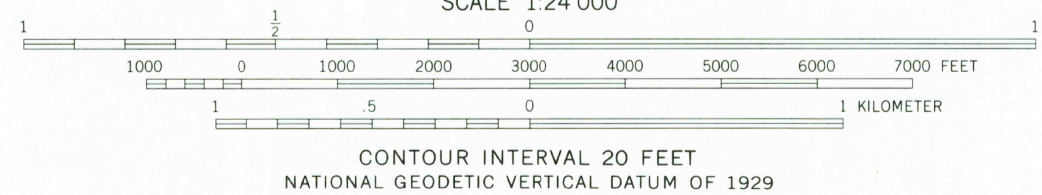
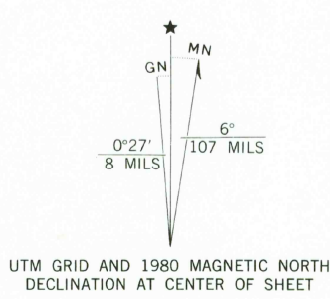
Projection and 10,000-foot grid ticks: Arkansas coordinate system, south zone (Lambert conformal conic)

1000-meter Universal Transverse Mercator grid, zone 15 1927 North American Datum

To place on the predicted North American Datum 1983 move the projection lines 8 meters south and 18 meters east as shown by dashed corner ticks

There may be private inholdings within the boundaries of the National or State reservations shown on this map

Areas covered by dashed light-blue pattern are subject to controlled inundation



ROAD CLASSIFICATION

Primary highway, hard surface	Light-duty road, hard or improved surface
Secondary highway, hard surface	Unimproved road
Interstate Route	U. S. Route
	State Route

THIS MAP COMPLIES WITH NATIONAL MAP ACCURACY STANDARDS FOR SALE BY U.S. GEOLOGICAL SURVEY, DENVER, COLORADO 80225, OR RESTON, VIRGINIA 22092 AND ARKANSAS GEOLOGICAL COMMISSION, LITTLE ROCK, ARKANSAS 72204. A FOLDER DESCRIBING TOPOGRAPHIC MAPS AND SYMBOLS IS AVAILABLE ON REQUEST

USGS
Historical File
National Mapping Div.

LANGLEY, ARK.
SE/4 ATHENS 15' QUADRANGLE
N3415-W9345/7.5

1980
DMA 7252 IV SE - SERIES V884

MAR 17 1981
2000