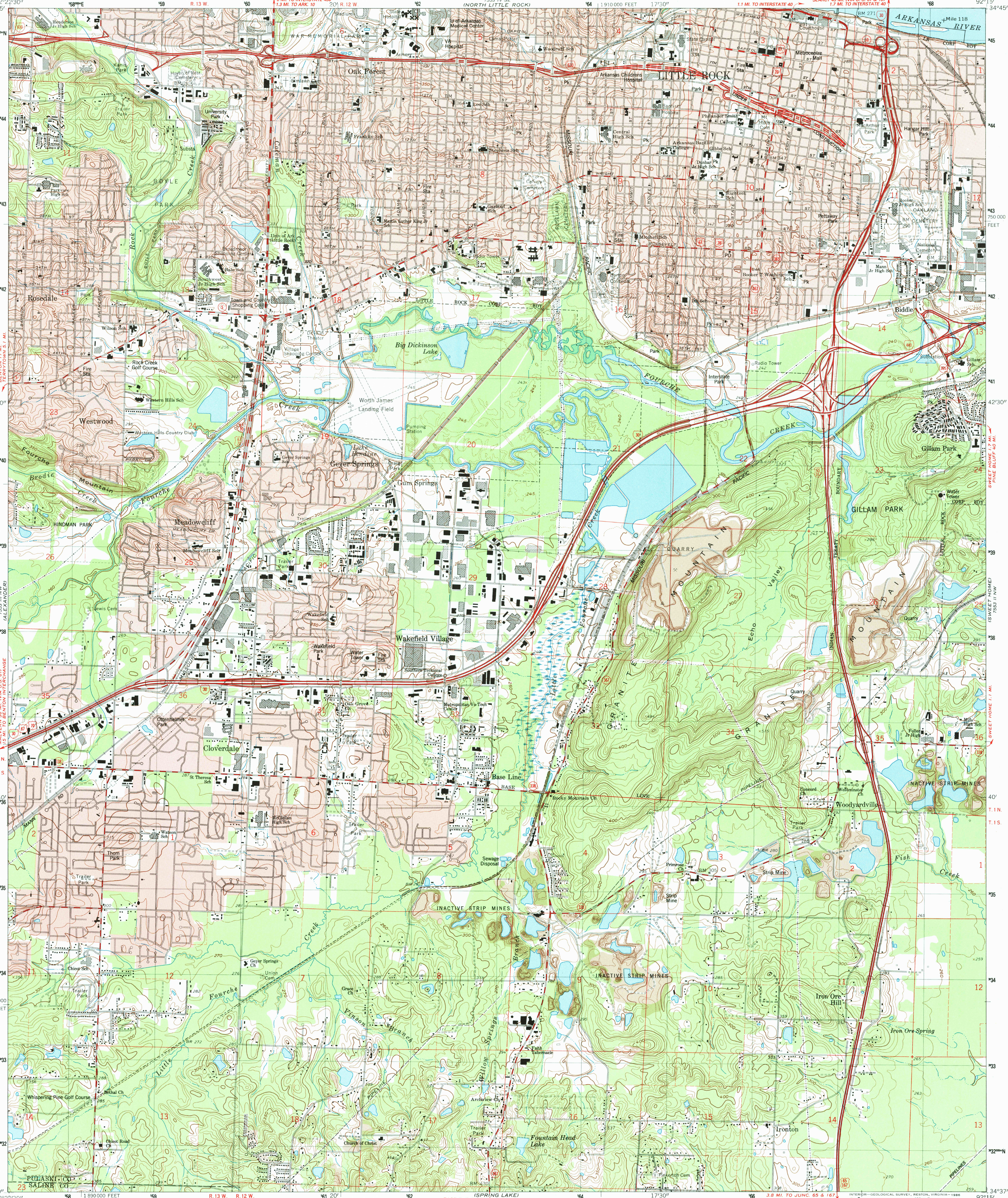
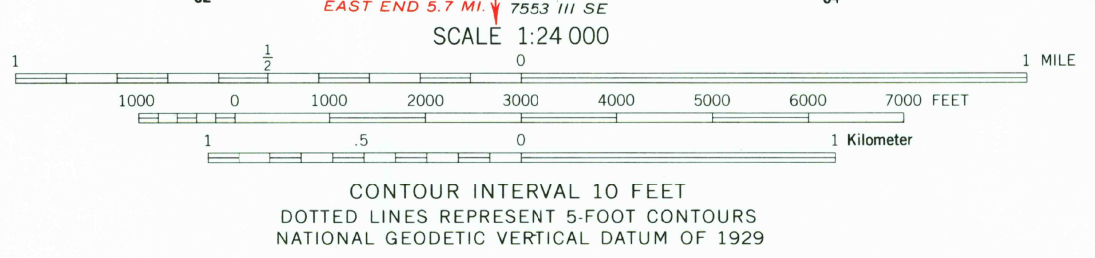
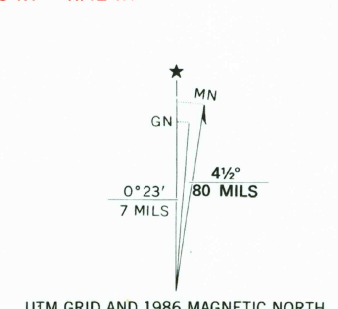


UNITED STATES  
DEPARTMENT OF THE INTERIOR  
GEOLOGICAL SURVEY

LITTLE ROCK QUADRANGLE  
ARKANSAS  
7.5 MINUTE SERIES (TOPOGRAPHIC)



Mapped, edited, and published by the Geological Survey  
Control by USGS and NOS/NOAA  
Topography by photogrammetric methods from aerial photographs taken 1960. Revised from aerial photographs taken 1984. Field checked 1985. Map edited 1986  
Projection and 10,000-foot grid ticks: Arkansas coordinate system, south zone (Lambert conformal conic)  
1000-meter Universal Transverse Mercator grid, zone 15  
1927 North American Datum  
To place on the predicted North American Datum 1983, move the projection lines 7 meters south and 14 meters east as shown by dashed corner ticks  
Red tint indicates areas in which only landmark buildings are shown  
Fine red dashed lines indicate selected fence and field lines where generally visible on aerial photographs. This information is unchecked



ROAD CLASSIFICATION

Heavy-duty	Light-duty
Medium-duty	Unimproved dirt

Interstate Route U.S. Route State Route

QUADRANGLE LOCATION

AR 11 1986

DEC 11 1986

FILE 0000

LITTLE ROCK, ARK.  
34092-F3-TF-024  
1986  
DMA 7553 III NE-SERIES V884