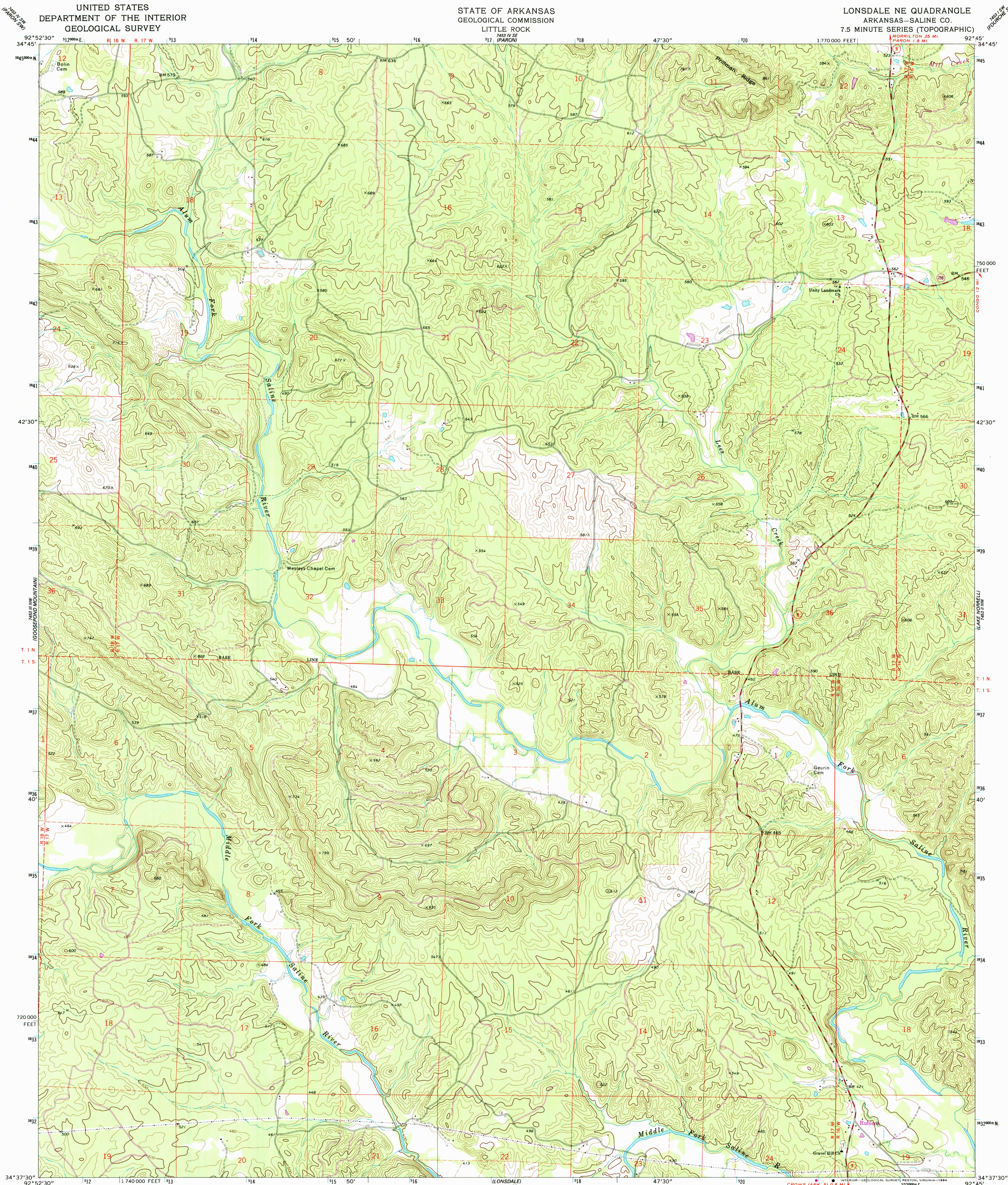


UNITED STATES
DEPARTMENT OF THE INTERIOR
GEOLOGICAL SURVEY

STATE OF ARKANSAS
GEOLOGICAL COMMISSION
LITTLE ROCK

LONSDALE NE QUADRANGLE
ARKANSAS—SALINE CO.
7.5 MINUTE SERIES (TOPOGRAPHIC)



Mapped, edited, and published by the Geological Survey

Control by USGS and USC&GS

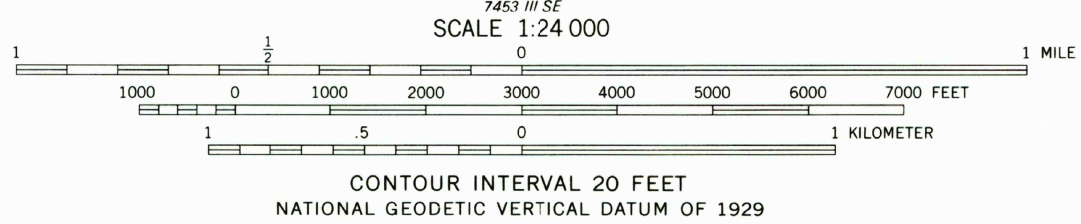
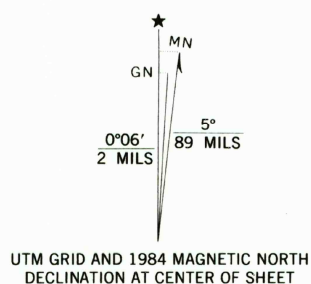
Topography by photogrammetric methods from aerial photographs taken 1968 and 1972. Field checked 1972

Projection and 10,000-foot grid ticks: Arkansas coordinate system, south zone (Lambert conformal conic)
1000-meter Universal Transverse Mercator grid ticks, zone 15, shown in blue. 1927 North American datum

Fine dashed lines indicate selected fence and field lines where generally visible on aerial photographs. This information is unchecked

To place on the predicted North American Datum 1983, move the projection lines 7 meters south and 15 meters east as shown by dashed corner ticks

Revisions shown in purple from aerial photographs taken 1982 and other sources. This information not field checked. Map edited 1984



ROAD CLASSIFICATION	
Primary highway, hard surface	Light-duty road, hard or improved surface
Secondary highway, hard surface	Unimproved road
Interstate Route	U. S. Route
	State Route

LONSDALE NE, ARK.
34092-F7-TF-024

1972
PHOTOREVISED 1984
DMA 7453 III NE-SERIES V884