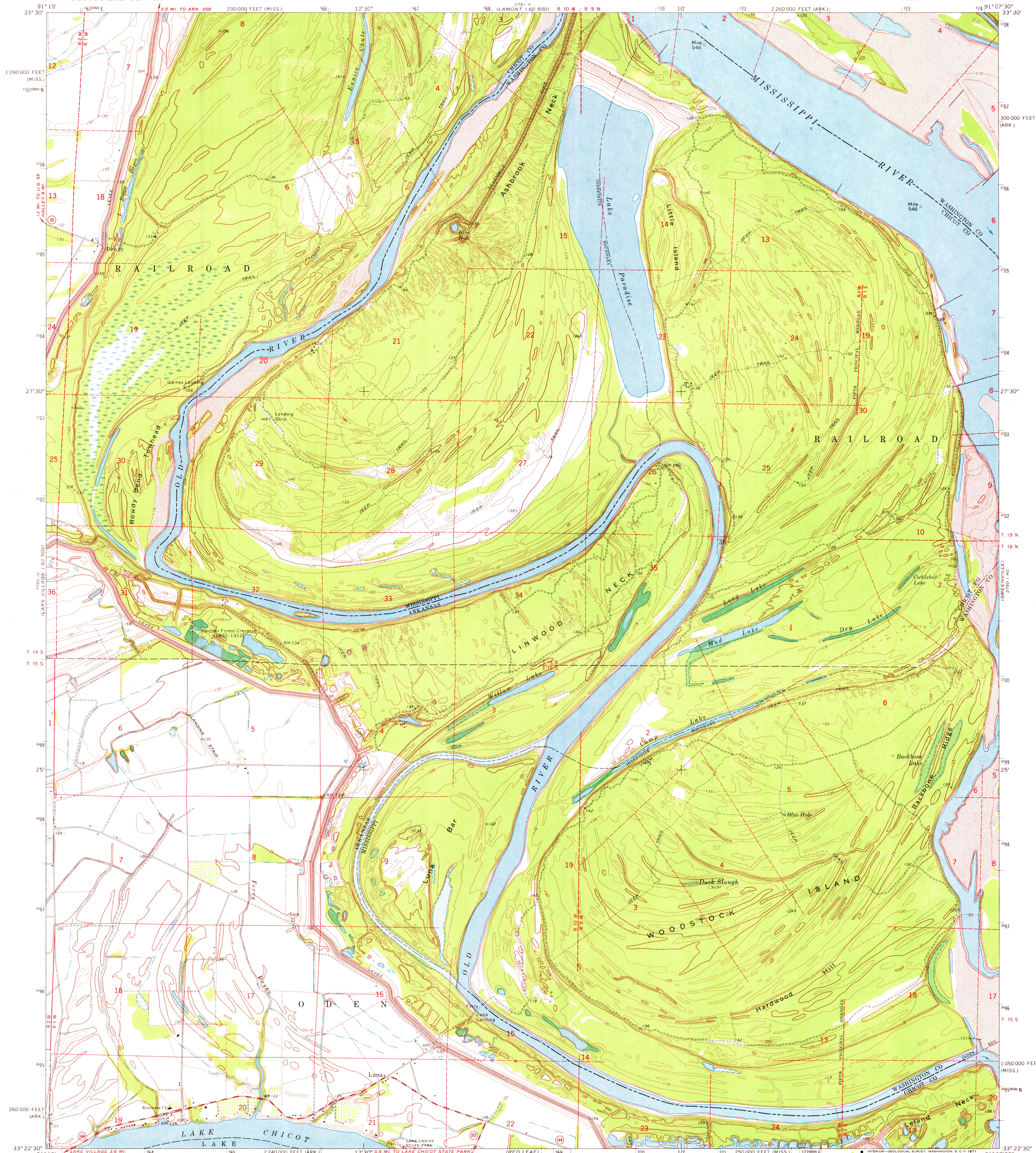
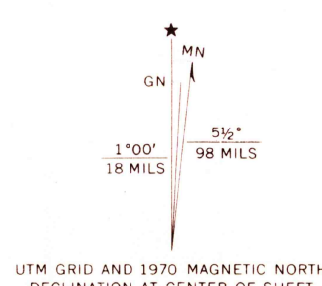


UNITED STATES
DEPARTMENT OF THE INTERIOR
GEOLOGICAL SURVEY

LUNA QUADRANGLE
ARKANSAS—MISSISSIPPI
7.5 MINUTE SERIES (TOPOGRAPHIC)
NW 4 GREENVILLE 15' QUADRANGLE



Mapped, edited, and published by the Geological Survey
Control by USGS, USC&GS, and USCE
Topography by photogrammetric methods from aerial
photographs taken 1967. Field checked 1970
Polyconic projection. 1927 North American datum
10,000-foot grids based on Arkansas coordinate system, south zone
and Mississippi coordinate system, west zone
1000-meter Universal Transverse Mercator grid ticks,
zone 15, shown in blue
Fine red dashed lines indicate selected fence and field lines where
generally visible on aerial photographs. This information is unchecked



SCALE 1:24,000
CONTOUR INTERVAL 5 FEET
DATUM IS MEAN SEA LEVEL

THIS MAP COMPLIES WITH NATIONAL MAP ACCURACY STANDARDS
FOR SALE BY U.S. GEOLOGICAL SURVEY, DENVER, COLORADO 80225, OR WASHINGTON, D.C. 20242
AND BY THE ARKANSAS GEOLOGICAL COMMISSION, LITTLE ROCK, ARKANSAS 72201
A FOLDER DESCRIBING TOPOGRAPHIC MAPS AND SYMBOLS IS AVAILABLE ON REQUEST



ROAD CLASSIFICATION
Secondary highway, all weather, Light-duty road, all weather,
hard surface
Unimproved road, fair or dry
weather
State Route

USGS
HISTORICAL FILE
TOPOGRAPHIC COLLECTION

LUNA, ARK.—MISS.
NW 4 GREENVILLE 15' QUADRANGLE
N3322.5—W9107.5/7.5

1970

AMS 7750 1 NW—SERIES V884

DEC 8 1977