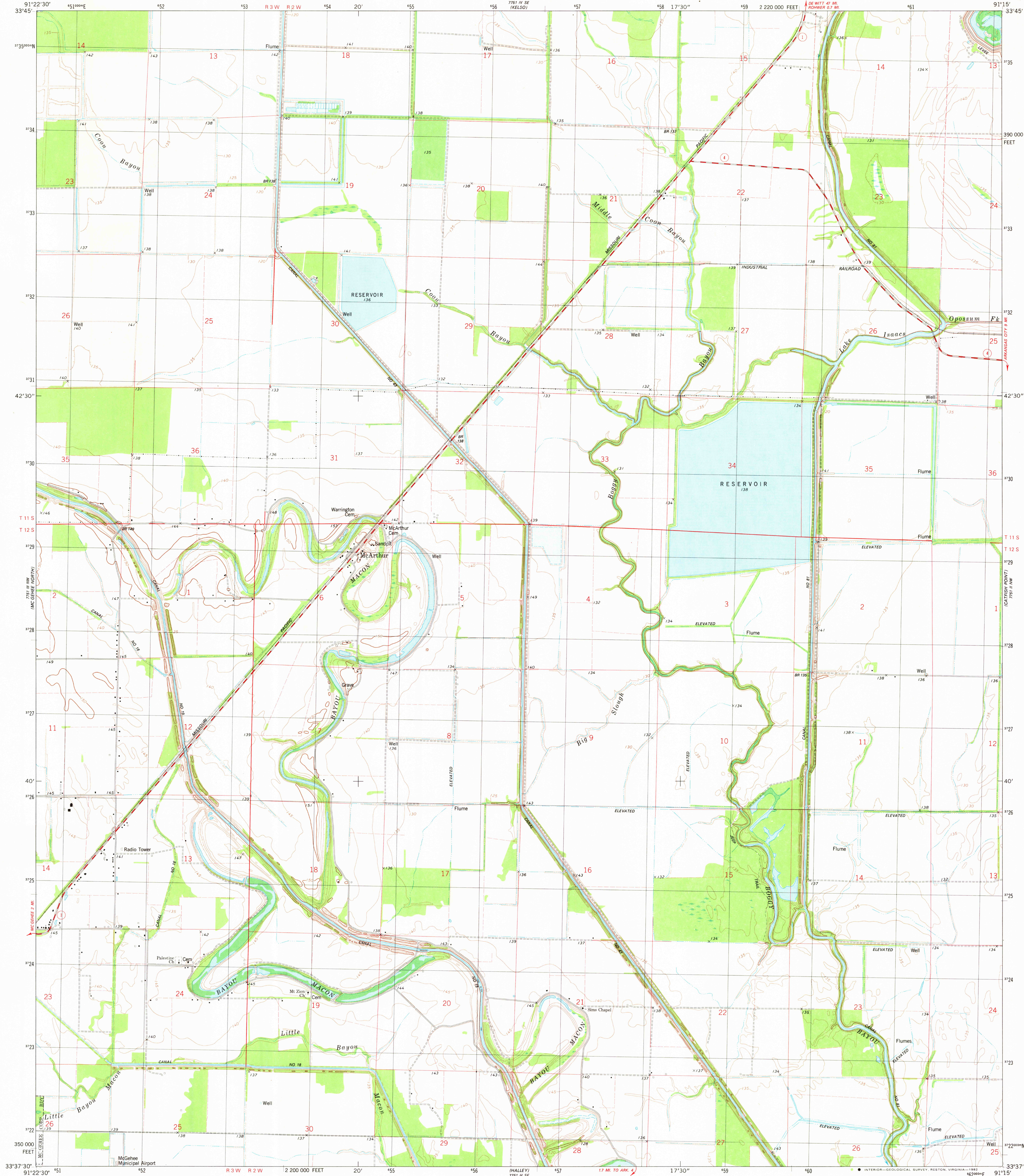


UNITED STATES
DEPARTMENT OF THE INTERIOR
GEOLOGICAL SURVEY

MC ARTHUR QUADRANGLE
ARKANSAS-DESHA CO.
7.5 MINUTE SERIES (TOPOGRAPHIC)
NE 1/4 MC GEHEE 15' QUADRANGLE



Mapped, edited, and published by the Geological Survey

Control by USGS and NOS/NOAA

Topography by photogrammetric methods from aerial photographs

taken 1975. Field checked 1978. Map edited 1981

Projection and 10,000-foot grid ticks: Arkansas coordinate

system, south zone (Lambert conformal conic)

1000-meter Universal Transverse Mercator grid, zone 15

1927 North American Datum

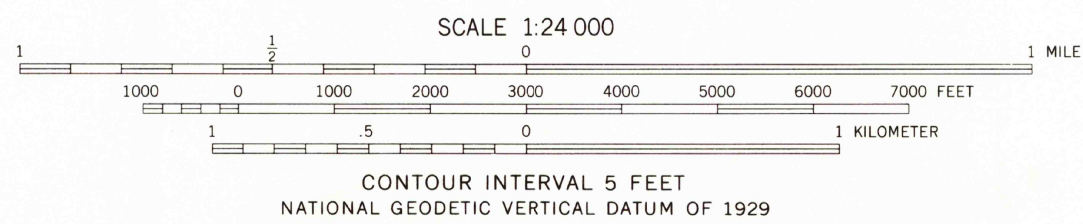
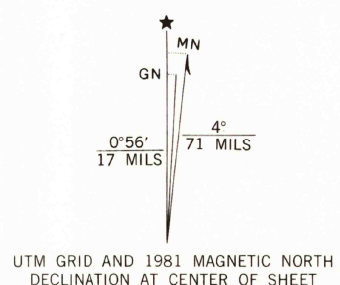
To place on the predicted North American Datum 1983

move the projection lines 10 meters south and

11 meters east as shown by dashed corner ticks

Fine red dashed lines indicate selected fence and field lines where

generally visible on aerial photographs. This information is unchecked



ROAD CLASSIFICATION

Primary highway, hard surface	Light-duty road, hard or improved surface
Secondary highway, hard surface	Unimproved road
Interstate Route	U. S. Route
	State Route

MC ARTHUR, ARK.
NE 1/4 MC GEHEE 15' QUADRANGLE
N3337.5-W9115.7.5

1981

DMA 7751 III NE-SERIES Y884

MAR 5 1982

9100