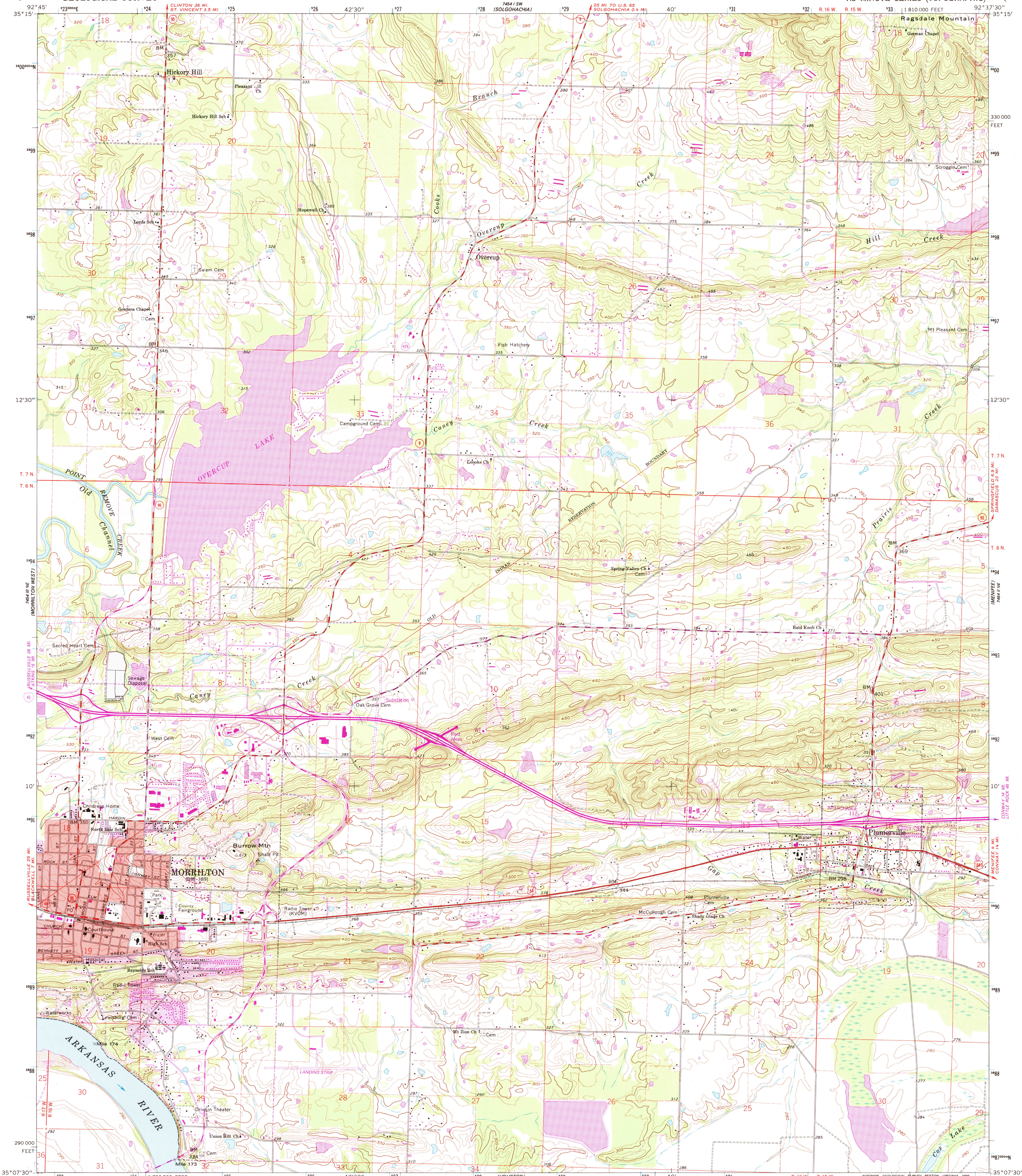


UNITED STATES  
DEPARTMENT OF THE INTERIOR  
GEOLOGICAL SURVEY

MORRILTON EAST QUADRANGLE  
ARKANSAS-CONWAY CO.  
7.5 MINUTE SERIES (TOPOGRAPHIC)



Produced by the United States Geological Survey  
Compiled by photogrammetric methods from imagery dated 1958  
Field checked 1961  
North American Datum of 1927 (NAD 27). Projection and  
10 000-foot ticks: Arkansas coordinate system, north zone  
(Lambert conformal conic)  
Blue 1000-meter Universal Transverse Mercator ticks, zone 15  
North American Datum of 1983 (NAD 83) is shown by dashed  
corner ticks. The values of the shift between NAD 27 and NAD 83  
for 7.5-minute intersections are obtainable from National Geodetic  
Survey NADCON software

UTM GRID AND 1995 MAGNETIC NORTH  
DECLINATION AT CENTER OF SHEET

SCALE 1:24 000  
1 000 0 1000 2000 3000 4000 5000 6000 7000 FEET  
1 0 1 KILOMETER  
CONTOUR INTERVAL 10 FEET  
NATIONAL GEODETIC VERTICAL DATUM OF 1929

USGS AND HISTORICAL  
MAP ARCHIVES  
JUL 21 1995  
2-RECD FILE COPY



ROAD CLASSIFICATION  
Primary highway, hard surface  
Secondary highway, hard surface  
Light-duty road, hard or improved surface  
Unimproved road  
Interstate Route  
U.S. Route  
State Route

THIS MAP COMPLIES WITH NATIONAL MAP ACCURACY STANDARDS  
FOR SALE BY U.S. GEOLOGICAL SURVEY, DENVER, COLORADO 80225, OR RESTON, VIRGINIA  
AND ARKANSAS GEOLOGICAL COMMISSION, LITTLE ROCK, ARKANSAS 72204  
A FOLDER DESCRIBING TOPOGRAPHIC MAPS AND SYMBOLS IS AVAILABLE ON REQUEST

Revisions shown in purple compiled in cooperation with  
State of Arkansas agencies from imagery dated 1989-90  
and other sources. Map edited 1995  
Information shown in purple may not meet USGS content  
standards and may conflict with previously mapped contours

MORRILTON EAST, AR  
3509286-TF-024  
1990

DMA 7454 II NW-SERIES V884