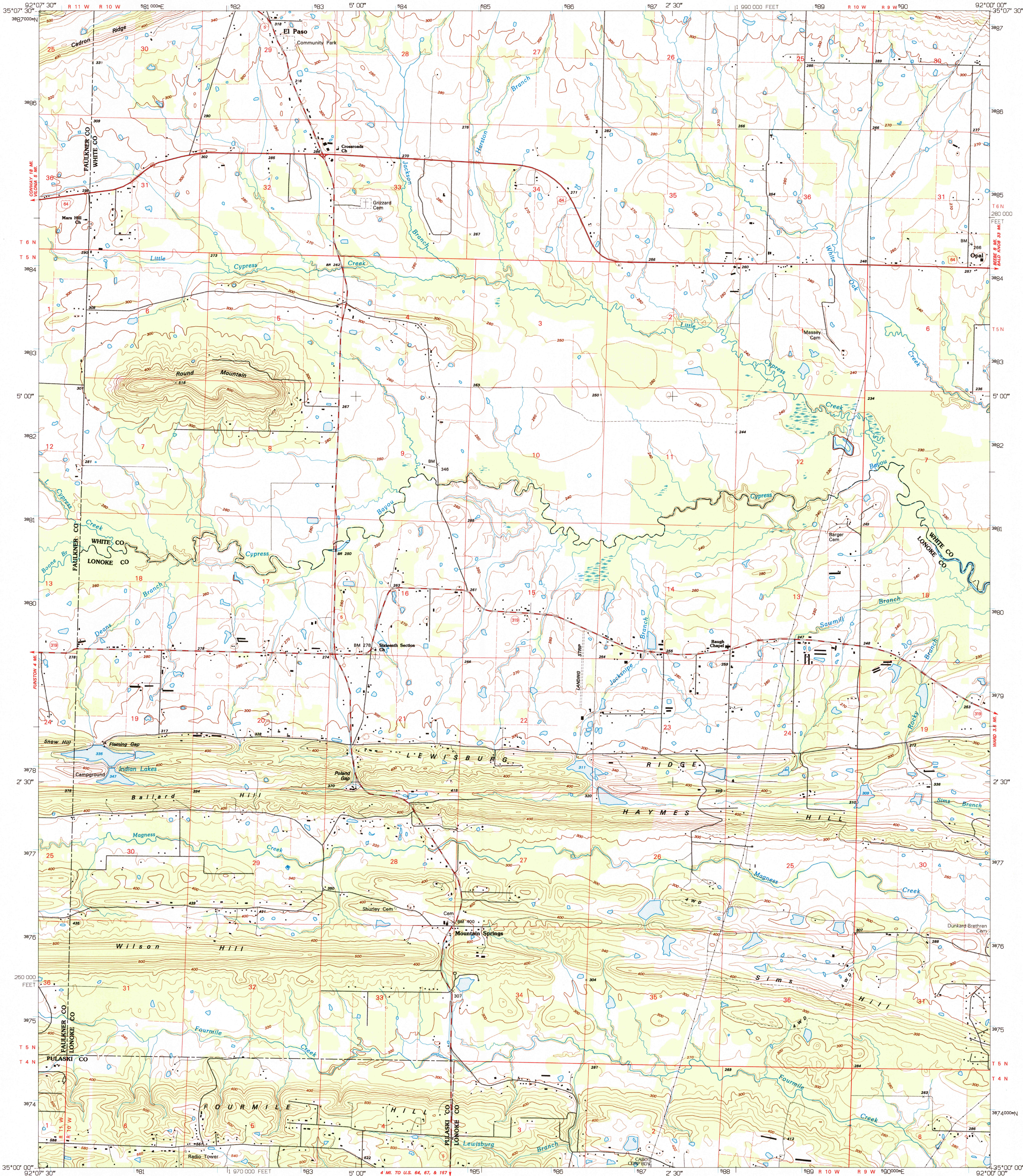
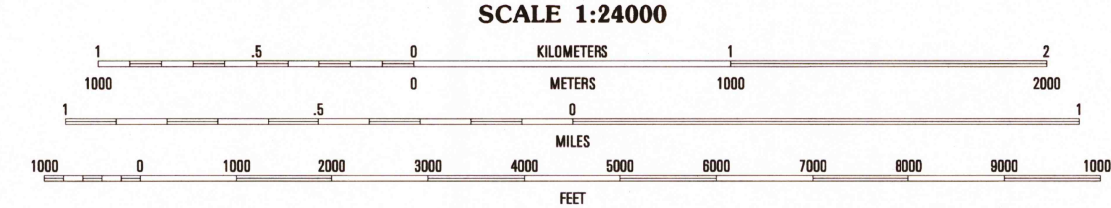
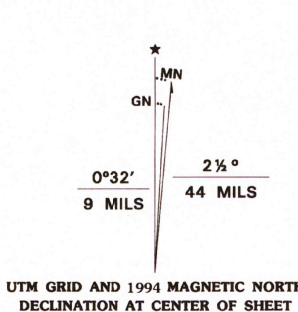


UNITED STATES
DEPARTMENT OF THE INTERIOR
GEOLOGICAL SURVEY

MOUNTAIN SPRINGS QUADRANGLE
ARKANSAS
7.5 MINUTE SERIES (TOPOGRAPHIC)



Produced by the United States Geological Survey
Control by USGS and NOS/NOAA
Topography by photogrammetric methods from aerial photographs taken 1960. Field checked 1963. Revised from aerial photographs taken 1989. Field checked 1993. Map edited 1994
North American Datum of 1927 (NAD 27). Projection and blue 1000-meter ticks: Universal Transverse Mercator, zone 14. 1000-foot ticks: Arkansas coordinate system, north and south zones
North American Datum of 1983 (NAD 83) is shown by dashed corner ticks. The values of the shift between NAD 27 and NAD 83 for 7.5-minute intersections are obtainable from National Geodetic Survey NADCON software
Fine red dashed lines indicate selected fence and field lines where generally visible on aerial photographs. This information is unchecked



THIS MAP COMPLIES WITH NATIONAL MAP ACCURACY STANDARDS
FOR SALE BY U.S. GEOLOGICAL SURVEY, DENVER, COLORADO 80225, OR RESTON, VIRGINIA 22092
AND ARKANSAS GEOLOGICAL COMMISSION, LITTLE ROCK, ARKANSAS 72204
A FOLDER DESCRIBING TOPOGRAPHIC MAPS AND SYMBOLS IS AVAILABLE ON REQUEST



ADJOINING 7.5' QUADRANGLE NAMES

1	2	3
4	5	6
7	8	9

1 Enola
2 Mount Vernon
3 Flyed
4 Viloin
5 Beebe
6 Olmstead
7 Cabot
8 Oak Grove

ROAD CLASSIFICATION
Primary highway
hard surface
Secondary highway
hard surface
Light-duty road, hard or
improved surface
Unimproved road
Interstate Route U.S. Route State Route

MOUNTAIN SPRINGS, ARK.
35092-A1-TF-024
1994

DMA 7504 II SE - SERIES Y884