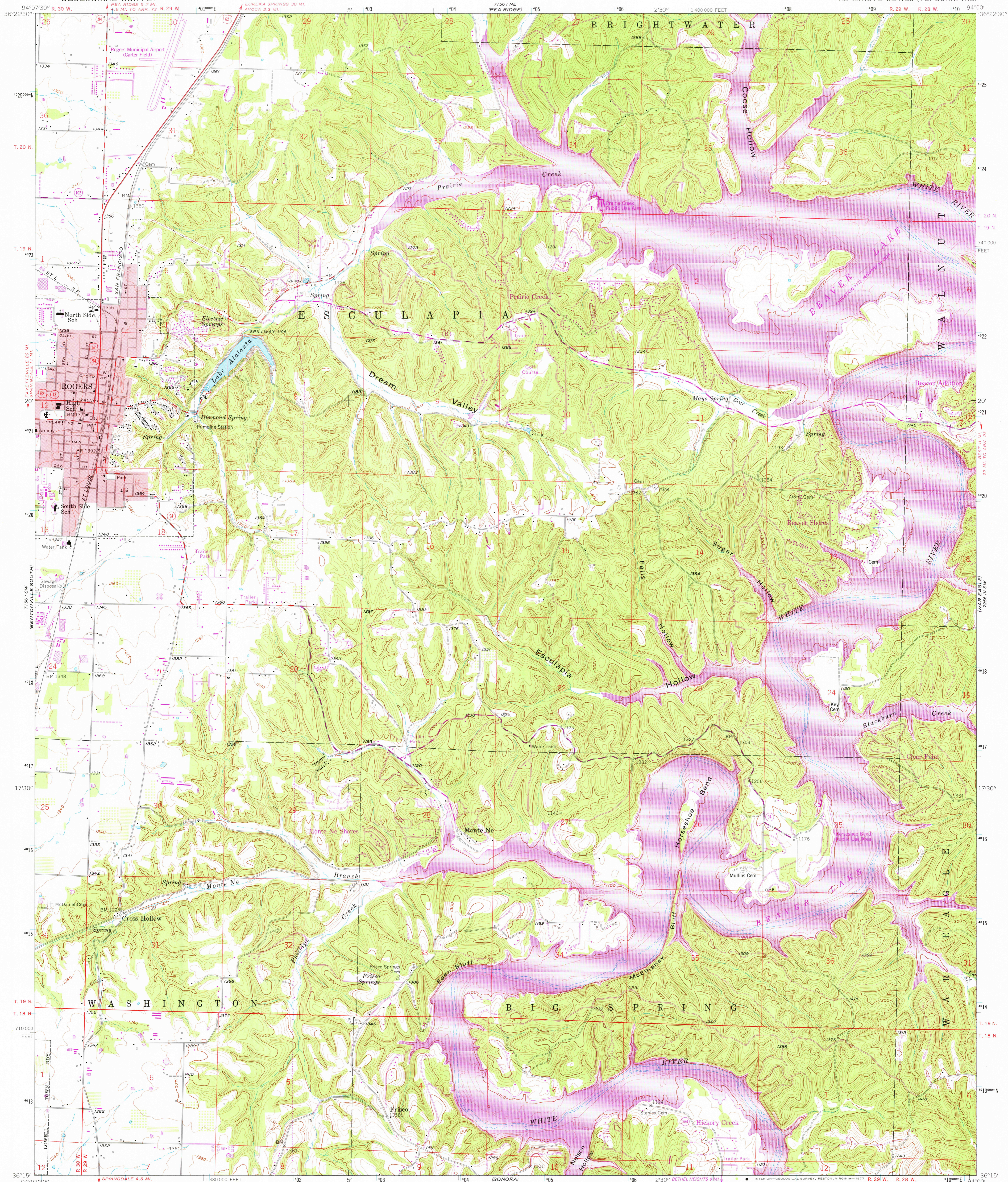


7156 NW
BENTON CO
NORTH

7256 NW
GARFIELD
NORTH

UNITED STATES
DEPARTMENT OF THE INTERIOR
GEOLOGICAL SURVEY

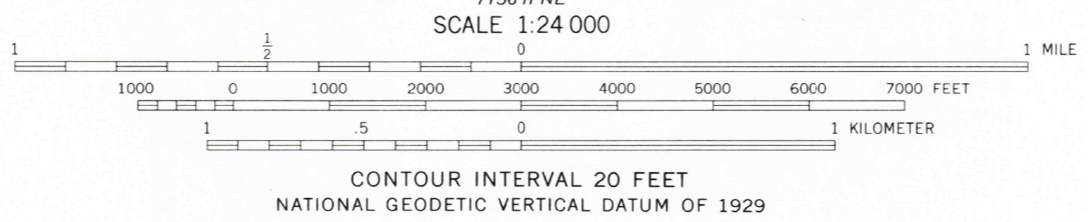
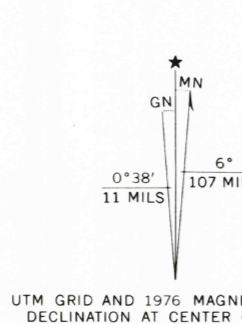
ROGERS QUADRANGLE
ARKANSAS—BENTON CO.
7.5 MINUTE SERIES (TOPOGRAPHIC)



SPRINGDALE
7156 NW
NORTH

SPRING VALLEY
7256 NW
NORTH

Maped, edited, and published by the Geological Survey
Control by USGS and USC&GS
Topography from aerial photographs by photogrammetric methods
Aerial photographs taken 1957. Field check 1958
Polyconic projection. 1927 North American datum
10,000-foot grid based on Arkansas coordinate system, north zone
1000-meter Universal Transverse Mercator grid ticks,
zone 15, shown in blue
Red tint indicates area in which only
landmark buildings are shown
Unchecked elevations are shown in brown
Revisions shown in purple compiled from aerial photographs
taken 1976. This information not field checked



ROAD CLASSIFICATION

Primary highway, hard surface	Light duty road, hard or improved surface
Secondary highway, hard surface	Unimproved road
Interstate Route	U. S. Route
	State Route

THIS MAP COMPLIES WITH NATIONAL MAP ACCURACY STANDARDS
FOR SALE BY U. S. GEOLOGICAL SURVEY, DENVER, COLORADO 80225, OR RESTON, VIRGINIA 22092
AND ARKANSAS GEOLOGICAL COMMISSION, LITTLE ROCK, ARKANSAS 72204
A FOLDER DESCRIBING TOPOGRAPHIC MAPS AND SYMBOLS IS AVAILABLE ON REQUEST

USGS
Historical File
Topographic Division

ROGERS, ARK.
N 3615—W 9400/7.5

AMS 7156 1 SE—SERIES Y884

OCT 20 1977