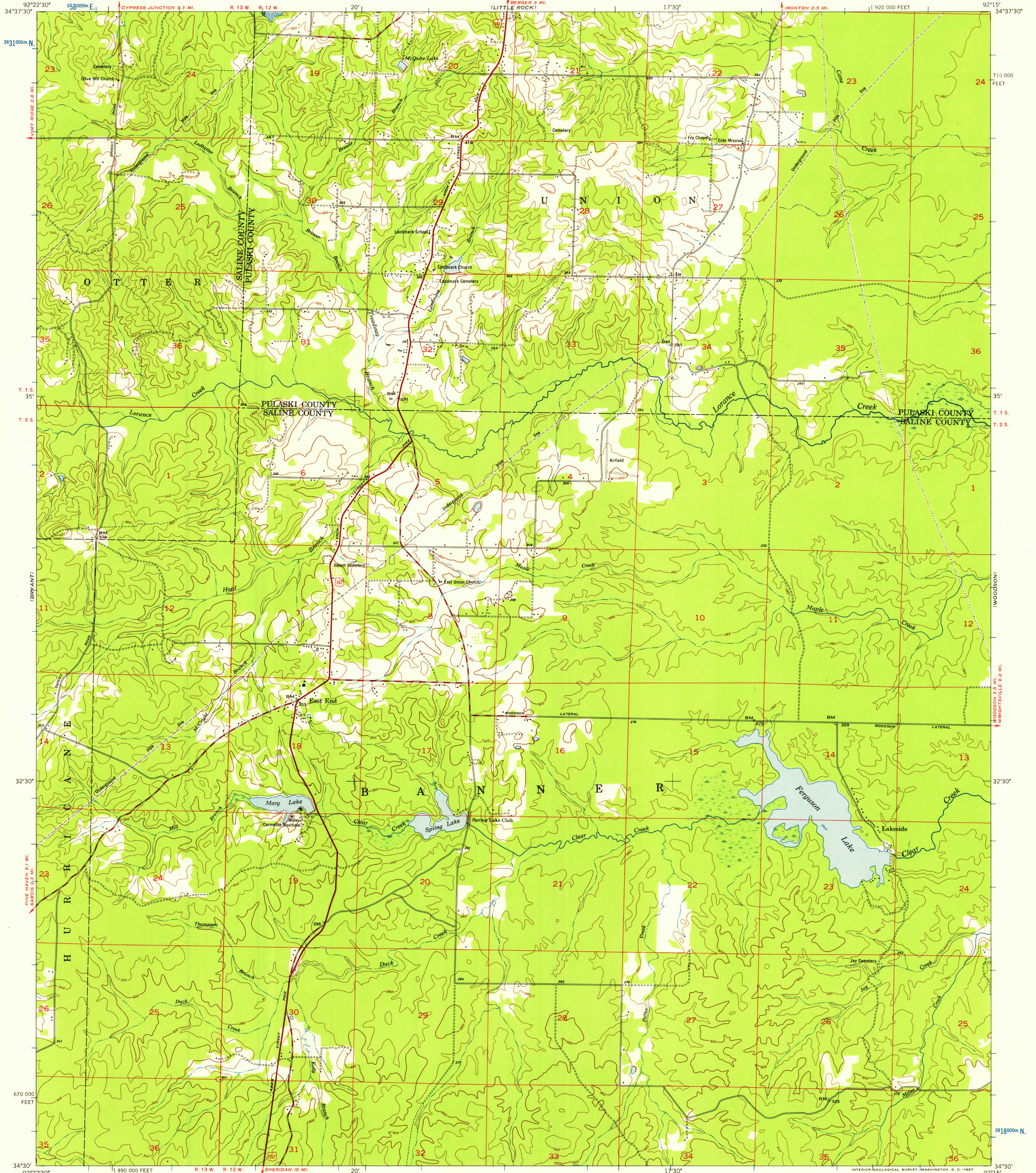


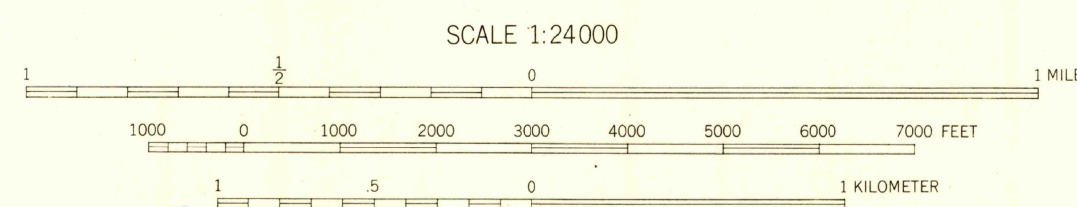
UNITED STATES
DEPARTMENT OF THE INTERIOR
GEOLOGICAL SURVEY

SPRING LAKE QUADRANGLE
ARKANSAS
7.5 MINUTE SERIES (TOPOGRAPHIC)
SE/4 ALEXANDER 15' QUADRANGLE



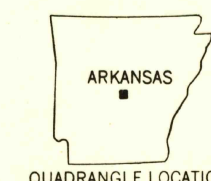
Mapped by the Geological Survey
Revised by the Army Map Service
Published for civil use by the Geological Survey
Control by USGS, USC&GS, and Arkansas Geological Survey
Topography by planetable surveys 1944
Planimetric detail revised from aerial photographs
taken 1952. Field check 1954
Polyconic projection. 1927 North American datum
10,000-foot grid based on Arkansas coordinate system,
south zone
1000-meter Universal Transverse Mercator grid ticks,
zone 15, shown in blue

7°
TRUE NORTH
MAGNETIC NORTH
APPROXIMATE MEAN
DECLINATION, 1954



THIS MAP COMPLIES WITH NATIONAL MAP ACCURACY STANDARDS
FOR SALE BY U. S. GEOLOGICAL SURVEY, DENVER 2, COLORADO OR WASHINGTON 25, D. C.
AND BY THE ARKANSAS GEOLOGICAL AND CONSERVATION COMMISSION, LITTLE ROCK, ARKANSAS
A FOLDER DESCRIBING TOPOGRAPHIC MAPS AND SYMBOLS IS AVAILABLE ON REQUEST

USGS
Historical File
Topographic Division



ROAD CLASSIFICATION
Heavy-duty ——— Light-duty ———
Medium-duty ——— Unimproved dirt ———
U. S. Route

U.S.G.S.
FILE COPY
TOPOGRAPHIC DIVISION

SPRING LAKE, ARK.
SE/4 ALEXANDER 15' QUADRANGLE
N3430-W9215/7.5

1954

MAY 10 1957