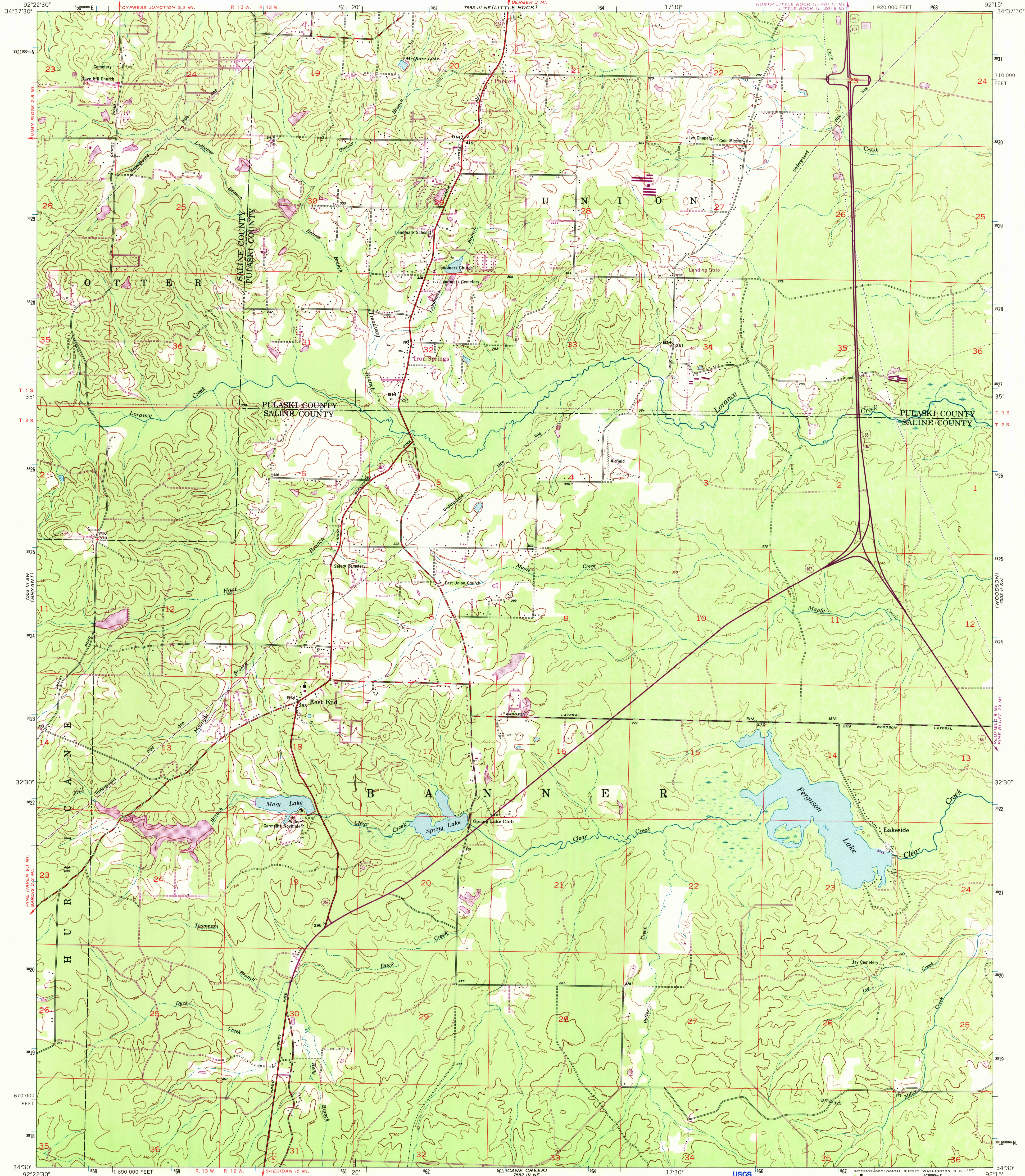


UNITED STATES  
DEPARTMENT OF THE INTERIOR  
GEOLOGICAL SURVEY

SPRING LAKE QUADRANGLE  
ARKANSAS  
7.5 MINUTE SERIES (TOPOGRAPHIC)  
SE/4 ALEXANDER 15' QUADRANGLE

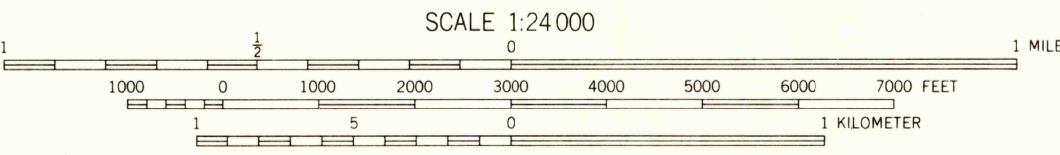
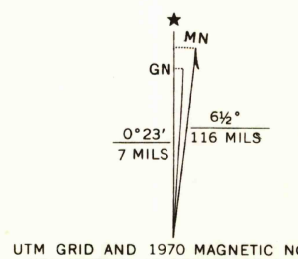


Map by the Geological Survey  
Revised by the Army Map Service  
Published for civil use by the Geological Survey

Control by USGS, USC&GS, and Arkansas Geological Survey  
Topography by planetable surveys 1944  
Planimetric detail revised from aerial photographs  
taken 1952. Field check 1954

Polyconic projection. 1927 North American datum  
10,000-foot grid based on Arkansas coordinate system,  
south zone  
1000-meter Universal Transverse Mercator grid ticks,  
zone 15, shown in blue

Revisions shown in purple compiled by the Geological Survey from  
aerial photographs taken 1970. This information not field checked



CONTOUR INTERVAL 20 FEET  
DATUM IS MEAN SEA LEVEL

THIS MAP COMPLIES WITH NATIONAL MAP ACCURACY STANDARDS  
FOR SALE BY U.S. GEOLOGICAL SURVEY, DENVER, COLORADO 80225, OR WASHINGTON, D. C. 20242  
AND BY THE ARKANSAS GEOLOGICAL COMMISSION, LITTLE ROCK, ARKANSAS 72201  
A FOLDER DESCRIBING TOPOGRAPHIC MAPS AND SYMBOLS IS AVAILABLE ON REQUEST

USGS  
Historical File  
Topographic Division



U.S.G.S.  
FILE COPY  
TOPOGRAPHIC DIVISION

ROAD CLASSIFICATION  
Heavy-duty ——— Light-duty ———  
Medium-duty ——— Unimproved dirt ———  
U.S. Route ——— State Route ———

SPRING LAKE, ARK.  
SE/4 ALEXANDER 15' QUADRANGLE  
N3430-W9215/7.5

1954  
PHOTOREVISED 1970  
AMS 7553 III SE-SERIES V884

2855  
FEB 10 1971