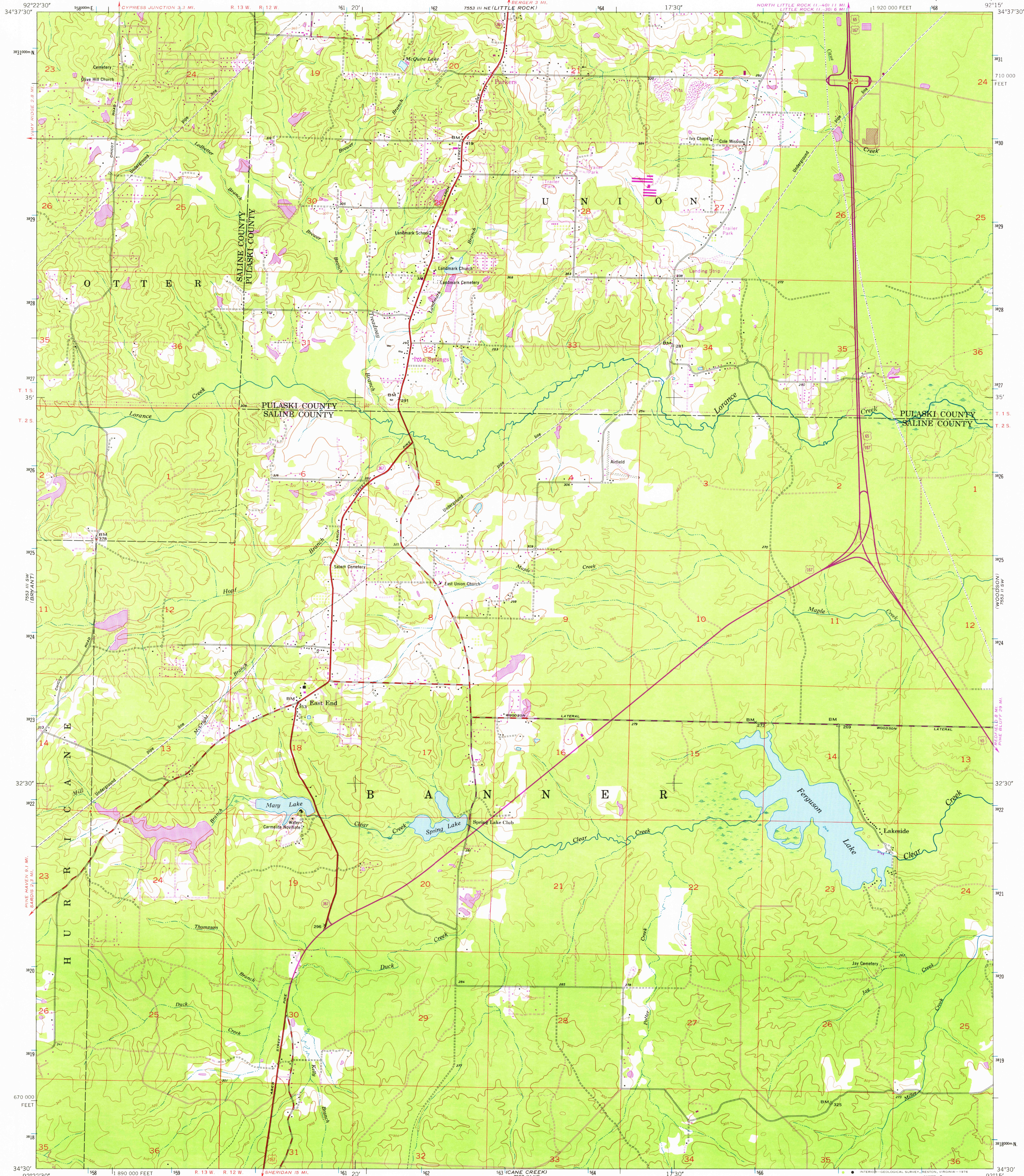


UNITED STATES
DEPARTMENT OF THE INTERIOR
GEOLOGICAL SURVEY

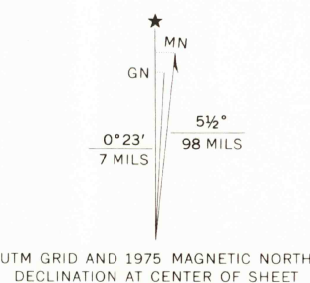
SPRING LAKE QUADRANGLE
ARKANSAS

7.5 MINUTE SERIES (TOPOGRAPHIC)



Mapped by the Geological Survey
Revised by the Army Map Service
Published for civil use by the Geological Survey
Control by USGS, USC&GS, and Arkansas Geological Survey
Topography by planetable surveys 1944
Planimetric detail revised from aerial photographs
taken 1952. Field check 1954
Polyconic projection. 1927 North American datum
10,000-foot grid based on Arkansas coordinate system,
south zone
1000-metre Universal Transverse Mercator grid ticks,
zone 15, shown in blue

Revisions shown in purple compiled by the Geological Survey
from aerial photographs taken 1970 and 1975. This information
not field checked



SCALE 1:24,000
1000 0 1000 2000 3000 4000 5000 6000 7000 FEET
1 5 10 KILOMETRE
CONTOUR INTERVAL 20 FEET
NATIONAL GEODETIC VERTICAL DATUM OF 1929

THIS MAP COMPLIES WITH NATIONAL MAP ACCURACY STANDARDS
FOR SALE BY U. S. GEOLOGICAL SURVEY, DENVER, COLORADO 80225, OR RESTON, VIRGINIA 22092
AND ARKANSAS GEOLOGICAL COMMISSION, LITTLE ROCK, ARKANSAS 72204
A FOLDER DESCRIBING TOPOGRAPHIC MAPS AND SYMBOLS IS AVAILABLE ON REQUEST



ROAD CLASSIFICATION
Heavy-duty ——— Light-duty ———
Medium-duty ——— Unimproved dirt ———
U. S. Route ——— State Route ———

USGS
Historical File
Topographic Division

SPRING LAKE, ARK.
N3430-W9215/7.5

1954

PHOTOREVISED 1970 AND 1975
AMS 7553 III SE-SERIES V884

DEC 02 1976