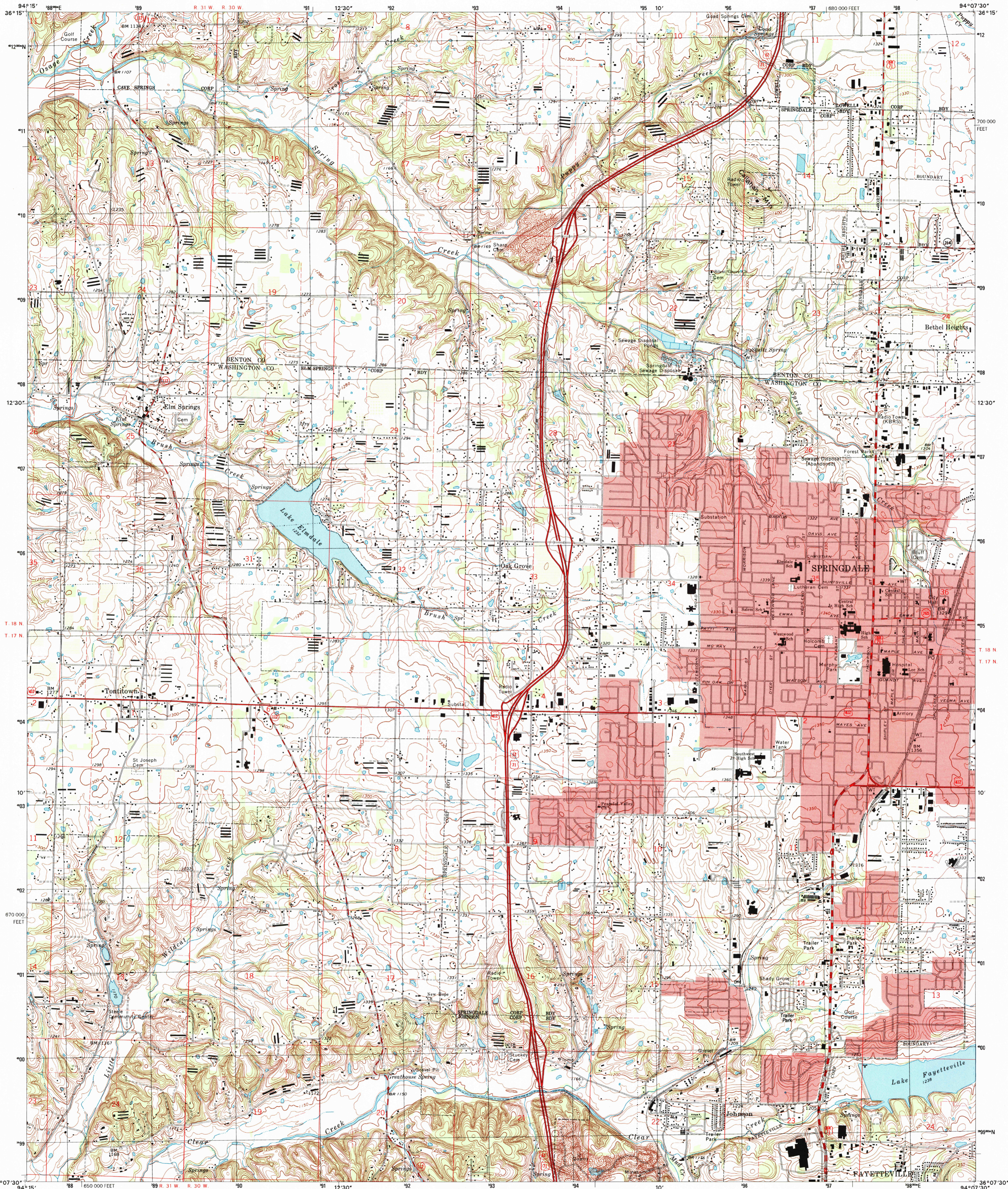
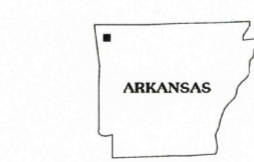
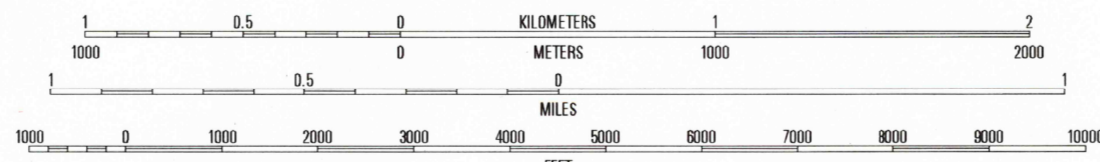
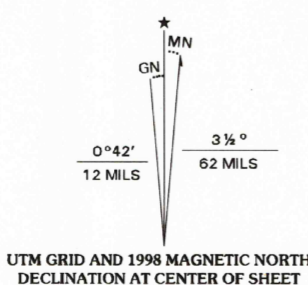


UNITED STATES  
DEPARTMENT OF THE INTERIOR  
GEOLOGICAL SURVEY

SPRINGDALE QUADRANGLE  
ARKANSAS  
7.5-MINUTE SERIES (TOPOGRAPHIC)



Produced by the United States Geological Survey  
Topography compiled 1968. Planimetry derived from imagery  
taken 1994. Public Land Survey System and survey control  
current as of 1970  
North American Datum of 1983 (NAD 83). Projection and  
1 000-meter grid: Universal Transverse Mercator, zone 15  
10 000-foot ticks: Arkansas Coordinate System of 1983  
(north zone)  
North American Datum of 1927 (NAD 27) is shown by dashed  
corner ticks. The values of the shift between NAD 83 and  
NAD 27 for 7.5-minute intersections are obtainable from  
National Geodetic Survey NADCON software  
Landmark buildings verified 1970



ROAD CLASSIFICATION  
Primary highway  
hard surface .....  
Secondary highway  
hard surface .....  
Interstate Route  
U.S. Route  
State Route  
Light-duty road, hard or  
improved surface .....  
Unimproved road .....  
=====

1	2	3	1 Centerton
			2 Bentonville South
			3 Rogers
4	5	6	4 Robinson
			5 Sonoma
			6 Wheeler
6	7	8	7 Fayetteville
			8 Elkville

RECEIVED  
AUG 3 1 1998  
USGS NMD  
HISTORICAL MAP ARCHIVES  
SPRINGDALE, AR  
1994  
NIMA 7156 II NW - SERIES V884

THIS MAP COMPLIES WITH NATIONAL MAP ACCURACY STANDARDS  
FOR SALE BY U.S. GEOLOGICAL SURVEY, P.O. BOX 25286, DENVER, COLORADO 80225  
AND ARKANSAS GEOLOGICAL COMMISSION, LITTLE ROCK, ARKANSAS 72204  
A FOLDER DESCRIBING TOPOGRAPHIC MAPS AND SYMBOLS IS AVAILABLE ON REQUEST

