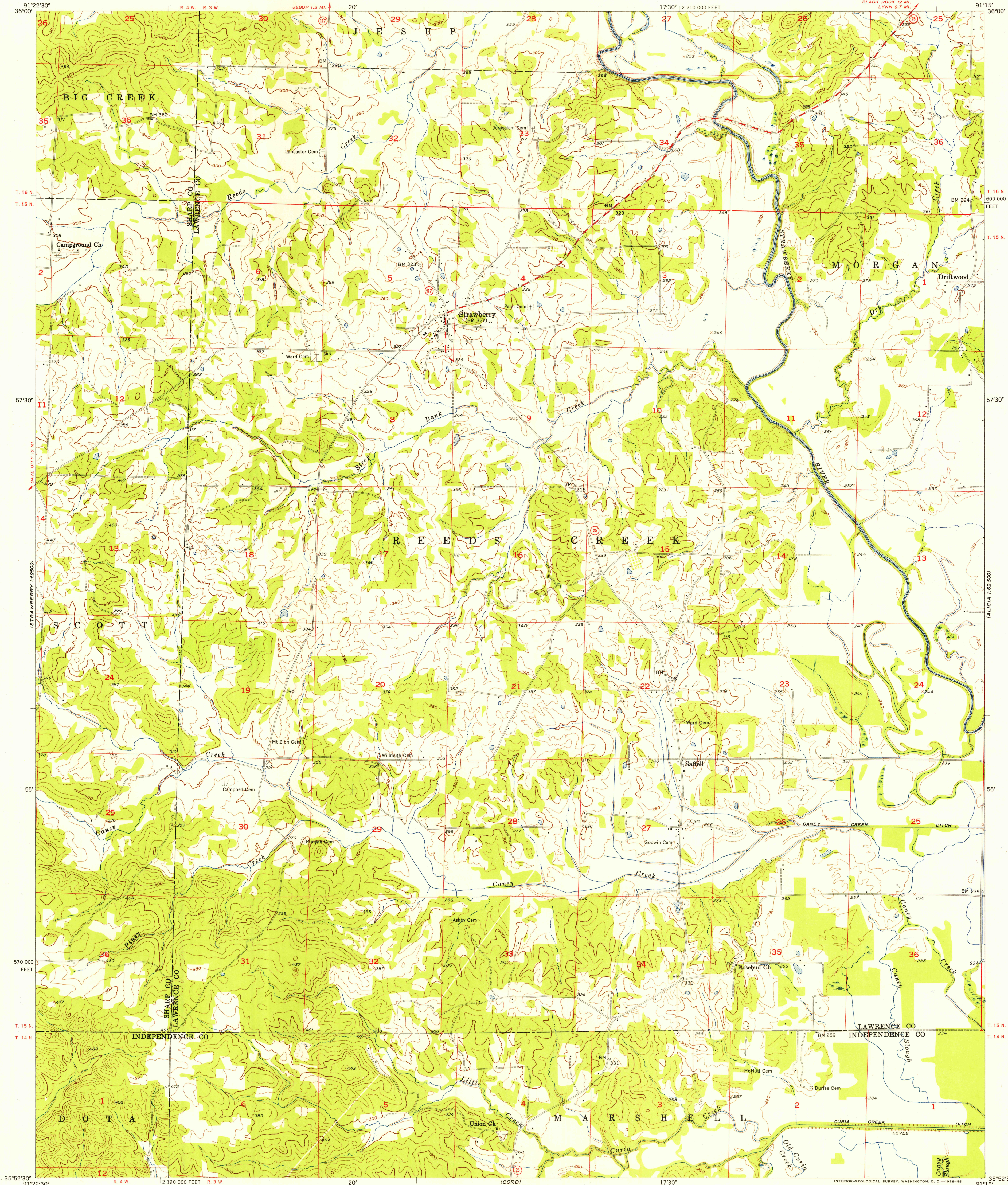
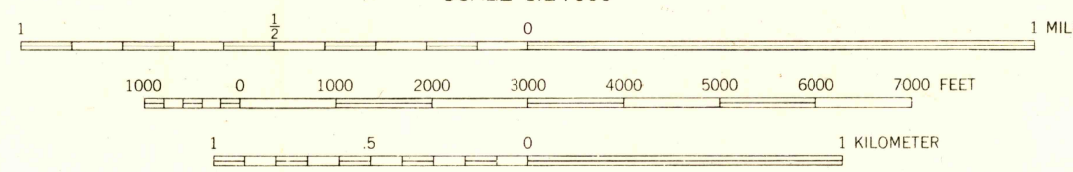


(POWATAN 1:62,500)

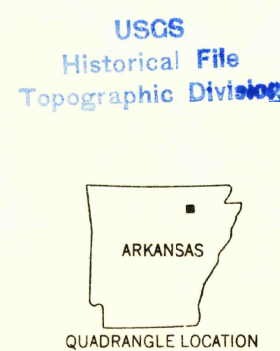


Maped, edited, and published by the Geological Survey  
Control by USGS and USC&GS  
Topography from aerial photographs by Kelsh plotter  
and by planetable surveys 1955. Aerial photographs taken 1952  
Polyconic projection. 1927 North American datum  
10,000-foot grid based on Arkansas coordinate system,  
north zone

TRUE NORTH  
MAGNETIC NORTH  
APPROXIMATE MEAN  
DECLINATION, 1955



THIS MAP COMPLIES WITH NATIONAL MAP ACCURACY STANDARDS  
FOR SALE BY U. S. GEOLOGICAL SURVEY, FEDERAL CENTER, DENVER, COLORADO OR WASHINGTON 25, D. C.  
AND BY THE ARKANSAS GEOLOGICAL AND CONSERVATION COMMISSION, LITTLE ROCK, ARKANSAS  
A FOLDER DESCRIBING TOPOGRAPHIC MAPS AND SYMBOLS IS AVAILABLE ON REQUEST



ROAD CLASSIFICATION  
Heavy-duty ——— Light-duty ———  
Medium-duty ——— Unimproved dirt ———  
U. S. Route ——— State Route ———

STRAWBERRY, ARK.  
NE 1/4 STRAWBERRY 15' QUADRANGLE  
N3552.5-W9115.7.5  
1955

JUL 18 1956

2605